



Business Process

T E C H N O L O G I E S

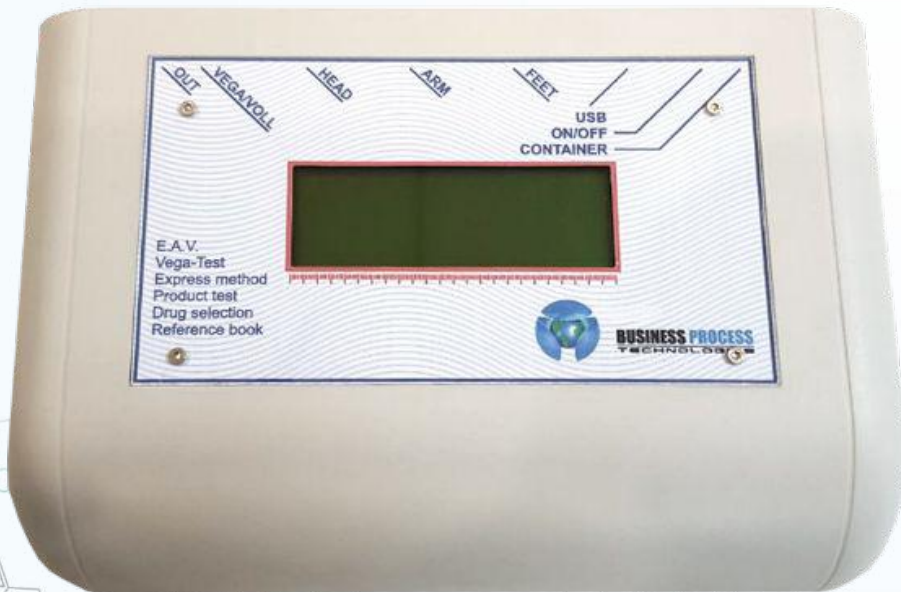
Karyna Vyshemirskaya



«Life Expert Profi»

segmentary

diagnostics



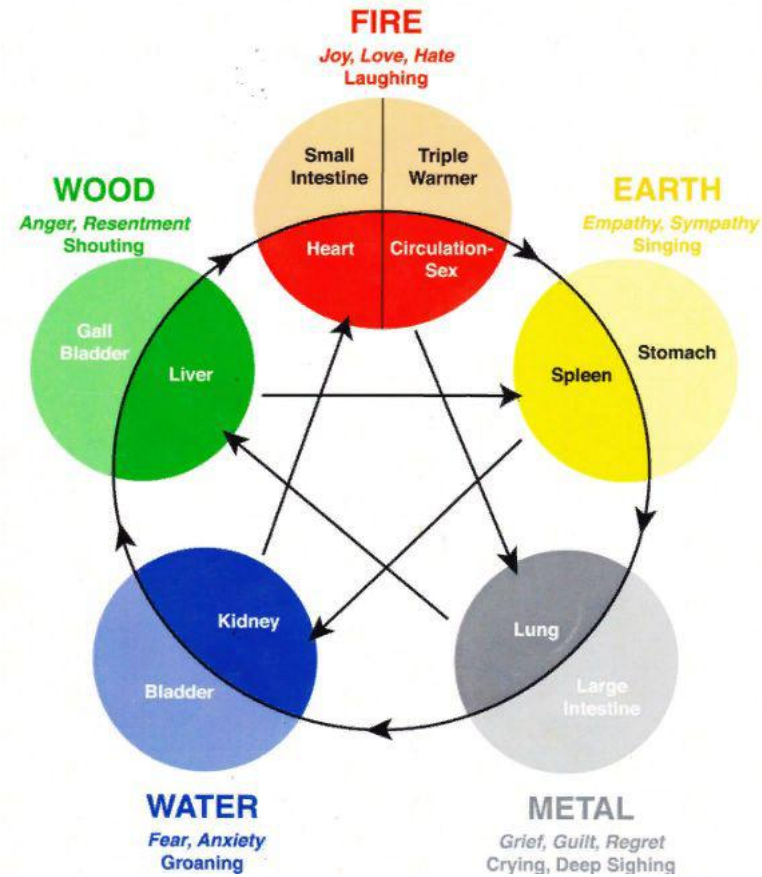
The hardware-software system Life Expert Profi has the following features:

- ✓ Express testing
- ✓ Drugs and supplements selection
- ✓ Food intolerance testing
- ✓ Electroacupuncture according to Voll
- ✓ Vega-test
- ✓ Bioresonance therapy
- ✓ Automatic composition of bundles for bioresonance therapy (BRT) devices based on test results
- ✓ Selector database for the hardware-software system consisting of more than 35,000 test resonance frequencies
- ✓ A unique mechanism of self-improvement.

Generates the reports of:

- ✓ Overall condition and risk level assessment for major systems
- ✓ Causative factors
- ✓ Diseased organs and systems
- ✓ Probable diagnoses
- ✓ Zodiac diet
- ✓ Food navigator
- ✓ Spine
- ✓ Aurogram
- ✓ Chakras
- ✓ Skin projections according to Zakharin-Head's zones
- ✓ Physiological age with identification of adverse effects
- ✓ Heavy metals
- ✓ Vitamin deficiency.

Segmental diagnostic is a method based on the discoveries of **Dr. Yoshi Nakatani** and **Dr. Voll**. Segmental diagnostic uses the fact that underlies the vital activity of all animals and humans - the principle of a segmental structure. Segments have separate nerves' roots (sensory and motor), which are located disk-shaped and consistently in the upper part of the body, in the limbs they are oriented longitudinally. Skin segments are associated with internal organs, nerves, through the divisions of the **autonomic nervous system**, which formed the basis for their comparison. The measurement is carried out in six square leads method by Dr. Voll and gives us the opportunity to get information about 9 systems and 47 segments of the human body.



WHAT INFORMATION CAN PROVIDE US A SEGMENT?

1. SPECIFIC ORGAN
2. SYSTEM
3. ON THE SPECIFIC PART OF THE BODY
4. VEGETATIVE NERVOUS SYSTEM
5. SPINAL CORD
6. VESSELS
7. INTERSELLULAR SPACE

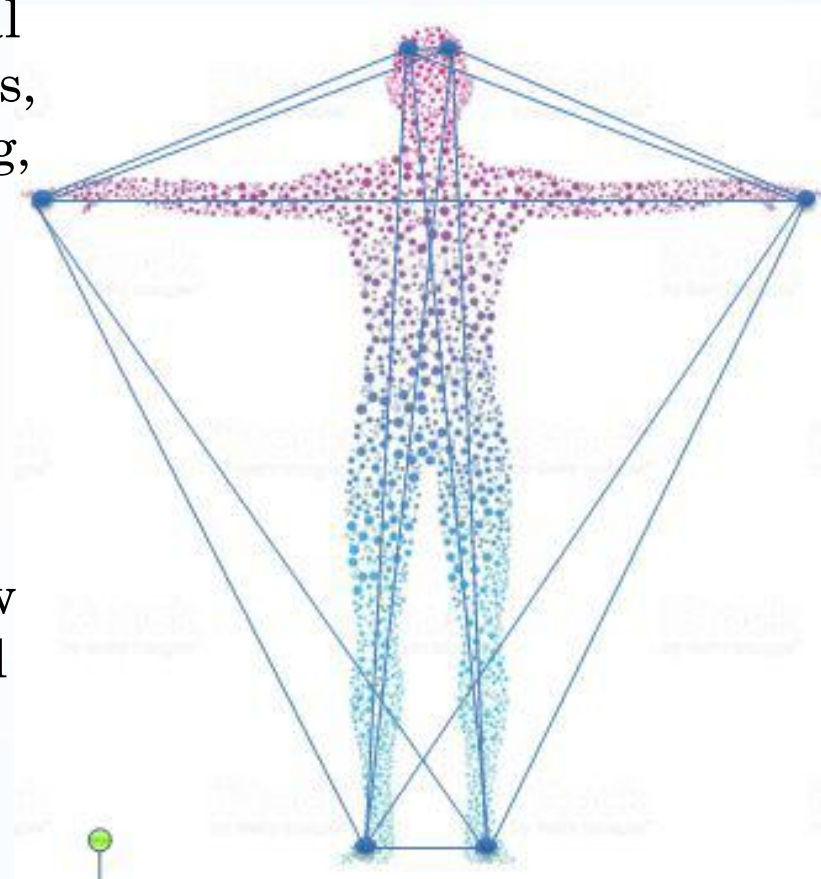


SEGMENTS

Left forehead - left hand - central nervous system (CNS), left eye, left ear, left frontal and maxillary sinus, cervical spine, tonsils, upper jaw teeth, left heart, upper left lung, nerves, vessels and joints of the left hand.

Right forehead- left forehead - CNS, cervical spine, frontal sinuses, upper jaw teeth, tonsils.

Right hand - right forehead - lower jaw teeth, tonsils, right ear, right eye, cervical spine, right heart, upper part of the right lung, nerves, joints of the right hand, central nervous system.



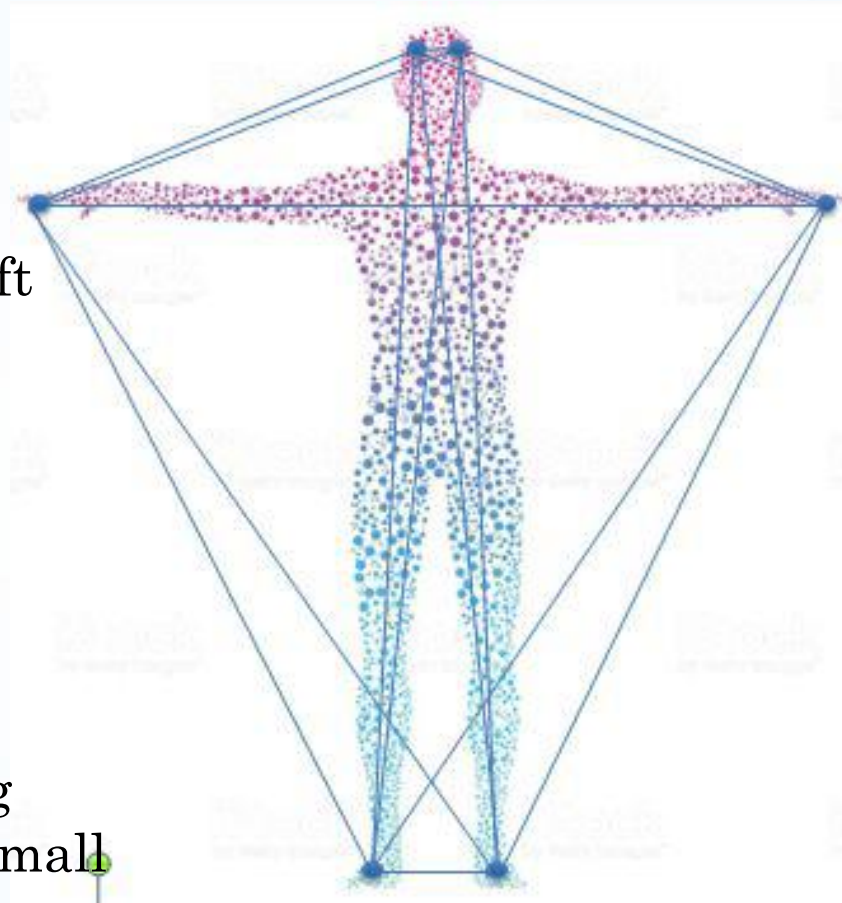
SEGMENTS

Left hand - right hand - heart, lungs, esophagus, thyroid, cervicothoracic spine junction, stomach, diaphragm.

Left leg - left arm - left kidney, heart, left lung, thoracic spine, esophagus, stomach, pancreas, sigma, descending colon.

Right leg - left leg - urogenital organs, rectum, lumbosacral spine

Right arm - right leg - hepato-biliary system, appendix, right kidney, ascending colon, lumbar spine, stomach, pancreas, small intestine.



WHAT DOES WE ALLOW TO SEE AND ASSESS SEGMENTAL DIAGNOSTICS?

Electromagnetic processes that accompany physiological, biochemical, biophysical reactions.

And that means

- The functional state of organs and systems
- The state of the immune system
- Endocrine system condition
- State of the vegetative nervous system
- The state of body tissues
- Psycho-emotional status

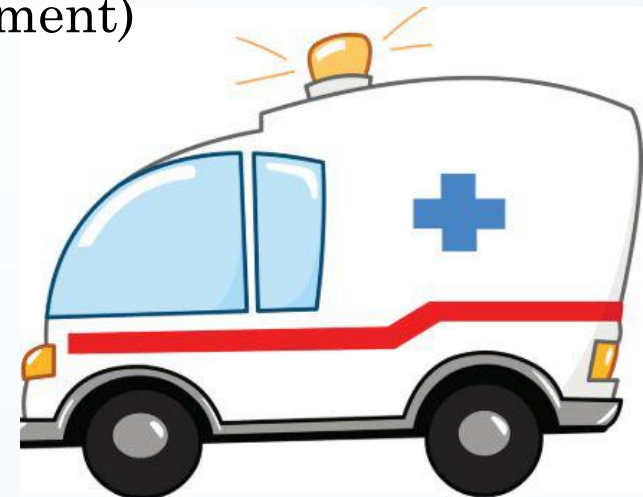
WHEN MEASURING

The human body receives background test electric current of $12 \mu\text{A}$, with a voltage 3.



CONTRAINDICATIONS

- The patient has a pacemaker, because of the possibility of a contravention of his functional abilities;
- The patient has a pathology of the skin in the measurement areas. (zones where we need to connect the electrodes)
- Sensitivity to electrical current and mechanical pressure (discomfort or pain during measurement)
- Resuscitation.
- Lack of contact of the human body with the electrode. Lack of body limbs



PREPARING THE PATIENT FOR DIAGNOSTICS



1. One day before do not use shower gels.
2. On the day of diagnosing do not to apply cosmetics and cream.
3. At the time of diagnosing the patient should not be hungry. Perfect time to eat is 2 hours before. If the diagnosis is early in the morning, then 1 hour before take a light breakfast.
4. For 2-3 days before it is not recommended to drink alcohol.
5. The day before do not drink coffee, strong tea, do not eat spicy food.
6. Right before do not eat chocolate, citrus food, do not chew gum.
7. Medications that can be canceled painlessly for a patient should be stopped one day before the examination. **Those medicines that are very important for the health take as prescribed by the doctor!!!!!!!!!!**





PREPARING THE PATIENT FOR DIAGNOSTICS



8. Exclude contact with chemically active substances (varnishes, paints, solvents, acetone, alcohol, gasoline, etc.) one day before the test.
9. Do not smoke the day before (if it does not cause stress to the patient).
10. It is not advisable for women to be examined during the menstruation.
11. Clothing is preferable from natural fabrics, before diagnosis it is necessary to remove all jewelry and metal objects. Turn off the mobile phone or remove it at a distance of 1.5m.
12. Before diagnosing, wash your hands with soap and water.
13. IN THE WINTER PERIOD, WOMEN ARE SUGGESTED TO COME IN PANTS AND SOCKS AS IT IS NECESSARY TO TAKE OF SHOES.





WHAT ELSE CAN INFLUENCE ON THE MEASUREMENT

- condition of the central nervous system
- skin
- external factors

Factors that reduce the measurement indicators

- degeneration processes
- chronic intoxication
- circadian rhythms (owl, lark)
- chronic diseases with tissue degeneration process
- lack of sleep
- hormone deficiency
- overwork
- long medication
- taking stimulants and tranquilizers

measuring indicators

- high temperature
- Stress
- Inflammation
- emotional and physical stress
- taking stimulants (medical, drugs, smoking; depends on dose)
- running and squatting sport)
- acute intoxication

TEST PROCEDURE

- Go to **Registration** and register a patient.
- Question the patient: did he have any surgery before? Does he have diabetes, allergy or any other serious disease? Does he have any complaints? If it is a woman - did she give a birth.
- Connect a patient to the device's electrodes.
- Go to **Rapid test** and do the measurement, send it for processing once done.
- Go to the **General conditions of systems** to see the type of a nervous system of the patient
- Go to **Bioresonance Therapy** and do a harmonization. During harmonization, all the cells of our body are activated with a current of 10 Hz.
- Go to **Rapid Test** and run the test again.
- Go to **Analysis** section to read the results.



INDICATORS

FP- (fall phenomenon): it says that there are self-induction mechanisms in the body and that the body itself produces some frequency and that the body has gone out of control of the central mechanisms of regulation and the pathological process develops in it.

- **FP 1-4** - compensated process
- **FP 5-11** - sub compensated process
- **FP 12-21** decompensated process
(non reversible organic changes)
- **FP 22 and more** destructive changes
(complete disruption of compensation mechanisms non-reversible destructive changes)



INDICATORS

SD (side difference) - between the paired segments of the right side and the left. Tells us about the presence of unilateral problems in paired organs, if the **SD in a paired organ is more than 5**, this **indicates pathology** (problem) in this organ or in vertebral interest

LV (lowest value) - for all segments in the **hypofunction corridor**. If the segment column is **within 40% of the norm corridor value**, then **these deviations are reversible**, if more than 40%, then this indicates irreversible processes occurring in the organ.

HV (highest value) - the segment with the highest value of the **hyperfunction corridor**.

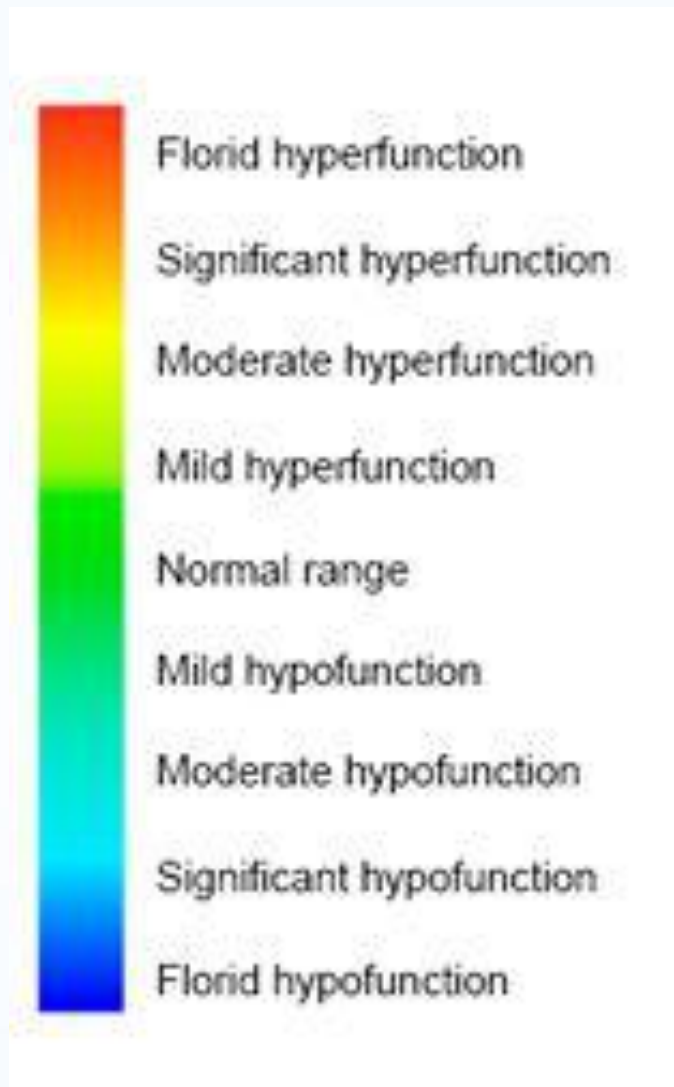
INDICATORS

FUNCTIONAL LABILITY OF THE SEGMENT - is the ability of an organ (segment) to adopt.

The lack of functional lability after the effect of **BRT harmonization** is indicated by the presence of morphological abnormalities in the organ and a decrease in the reserves of adaptation. If the organ after harmonization has not shown any changes, it indicates the presence of pathology in this organ.

LABILITY IS AN OBLIGATORY REACTION OF THE ORGANISM ON STRESS.

Interpretation of coloured values of segmental diagnostics



Interpretation of coloured values of segmental diagnostics

Red, orange range - Autoimmune processes (rheumatic, reactive) allergic processes, acute toxic load (of exo or endogenous origin with helminthases, bacterial processes, candidiasis of internal organs), acute inflammatory process of a bacterial nature and a fungal nature (yeast flora).

Yellow range - Functional tension, poor pathological processes.

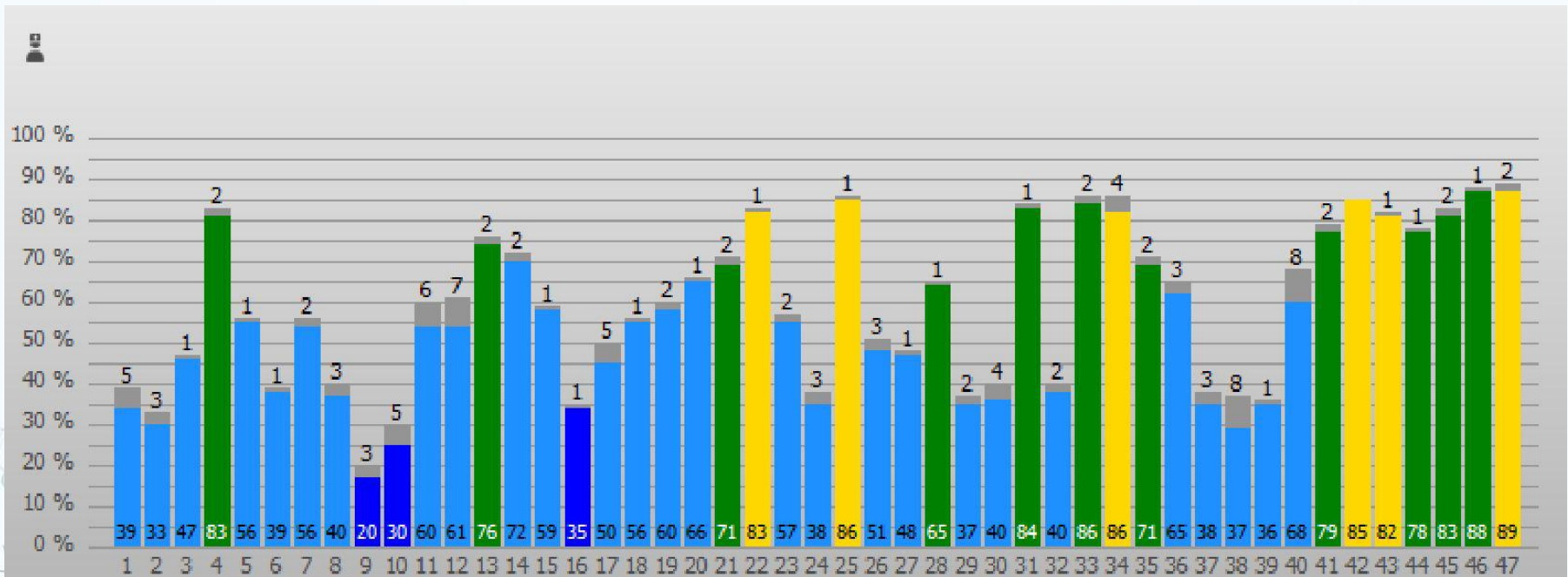
Green range - Normal values.

Turquoise range - Functional consumption, poor pathological processes.

Blue, dark-blue, violet range - Chronic inflammatory processes, chronic intoxications (helminthiases, systemic diseases such as diabetes, metabolic syndrome, chronic liver and kidney diseases), oxygen starvation, viral and fungal processes (mold).

WHAT PROCESSES REFLECT IN THE COLUMN DIAGRAM?

The processes occurring in the mesenchyme. It is the matrix or mesenchyme that integrates the body into a single structure.





...	Organs and systems	Index		
1.	Cerebral blood circulation on the right		25	5
2.	Cerebral blood circulation on the left		22	7
3.	Venous systems (right cardiac zones)		32	6
4.	Arterial system (left cardiac zones)		49	7
5.	Organs of vision and hearing on the right		31	2
6.	Organs of vision and hearing on the left		32	2
7.	Maxillary and frontal sinuses on the right		28	3
8.	Maxillary and frontal sinuses on the left		30	10
9.	Hypothalamus		16	
10.	Hypophysis		17	9
11.	Thymus		29	2
12.	Thyroid gland right lobe		51	7
13.	Thyroid gland left lobe		45	2

FP- (fall phenomenon)

SD (side difference)
 $49 - 32 = 18$

Norm corridor

LV (lowest value)

There is no lability and no HV

SELECTION OF MERIDIANS FOR LOADING/HARMONIZATION TEST

- ❑ **1st type of the autonomic nervous system** – increase in the tone of the parasympathetic nervous system **VERTICAL MERIDIAN**; duration 2 - 3 minutes
- ❑ **2nd type of autonomic nervous system** - eutonia **CIRCULAR MERIDIAN** ; duration 3 - 4 minutes
- ❑ **3d type of the autonomic nervous system** - increase in the tone of the sympathetic nervous system; **HORIZONTAL MERIDIAN** duration 4 - 5 minutes
- ❑ 4 in case you don't know the type of the patient's nervous system use **DIAGONAL MERIDIAN**; duration 3 minutes
- ❑ Duration for CHILDREN **1 MINUTE**; ELDERLY PEOPLE **5 - 7 MINUTES**



Business Process
TECHNOLOGIES

WebWellness

— Within a minute the **Life Expert** device measures all the indicators of natural bio systems, and with the help of a computer program sends them to a powerful server and transmits the result



**Life
Expert**

**Life
Balance**



Due to the test results an **automatic individual complex** is loading into your Life Balance device



Business Process
TECHNOLOGIES

Thank you for attention



Business Process
TECHNOLOGIES

Karyna Vyshemirskaya
phone:+34643383450

email:karina.vishemirskaya@gmail.com



@vishemirskaya