

Comprehensive
Wellness Device

DeVita
Combi

Methodological Recommendations

Intended use

DeVita Combi 5-in-1 universal device (DeVita AP, DeVita Ritm, DeVita Cosmo, HV) for electromagnetic, quantum and electropuncture wellness sessions. It is used to protect against stress factors, maintain homeostasis, improve performance, reduce pain, and prevent premature aging

It can be used in beauty and wellness rooms, relaxation rooms, and at home.

Methods of wellness exposures

1. Electromagnetic exposure

Electromagnetic regulatory effect.

The DeVita Combi, as an electromagnetic device, emits low-intensity electromagnetic oscillations of precisely defined shape and frequency.

This type of effect is carried out in two ways:

- regulatory (DeVita Ritm frequencies are used);
- destructive (using DeVita AR frequencies).

Regulatory electromagnetic effect was based on many years of developments by the scientists R. Voll, H. Schimmel, A.F. Cramer and others. According to their studies, each organ has its own oscillations, which in weakened organs differ from healthy ones. In this case, the device will generate low-intensity bioresonance frequencies for various organs and systems imitating the vibrations of healthy organs. The impact of these frequencies "adjusts" the body to a healthy wave, which, as a result, leads to an increase in the reserves of adaptation and restoration of the processes of self-recovery regulation.

The method is based on the ability of a living organism to selectively respond to electromagnetic radiation of extremely low intensity. Under the influence of such exposure, the transport of substances through cell membranes and basic bioenergetic processes will be activated, allowing the body to cope with the problem.

To enhance the healing effect, you can combine the electromagnetic method with quantum or electropuncture.

Note: some programs have restrictions on the use depending on the time of day and age. (See DeVita Ritm mini program description).

Electromagnetic destructive effect.

Destructive effect is based on the development of R. Rife and his supporters. Scientists have proved that every living form has its own electromagnetic radiation. Waves of a certain frequency, reproduced by the device, resonate with the own radiation of the microorganisms, enhancing their natural vibrations. Intensive fluctuations become disastrous for parasites.

In this case, the device will generate frequencies specific to certain types of viruses, bacteria, helminths, protozoa and fungi, and, in addition, allows the deep purification of the body from toxins.

Since the use of AP frequencies is tied to the incubation period of pathogens or the inflammatory process, its daily use for a long time is not recommended. It is mandatory to drink clean potable water during the use of this device. Side effects in the form of: headaches, swelling, skin rashes, nausea may occur in the case of non-compliance.

To perform electromagnetic exposure, you can use both the programs of the basic complexes consisting of manual and automatic programs, and the DeInfo program sets. In addition, the device can create its own unique complexes and programs for the regulatory exposure.

Methods of using the programs and their descriptions are given in Appendices 1, 3, 5 for the DeVita Ritm and Appendices 2, 4, 5 for the DeVita AP. When making your own recovery schemes using programs of destructive direction, remember that antiparasitic programs should be followed by programs for the removal of toxins.

2. Quantum exposure.

As a quantum exposure device, the DeVita Combi emits frequencies similar to electromagnetic regulation (DeVita Ritm), the infra-red light and light waves in four spectral colors of visible light.

The principle of action is a reflexive effect on the nerve endings located in the skin, which activates the synthesis of biologically active substances, reduces the number of pathogens on the surface of the skin and mucous membranes, and increases the barrier function of the skin.

When working with the device, you can use only the quantum console or combine its effect with electromagnetic direction. This combined radiation is highly efficient in affecting the biological processes in the body, it restores the balance of the nervous and endocrine systems, which has a favorable effect on the entire body and its ability to cope with various illnesses.

It has anti-inflammatory, regenerating, toning and rejuvenating effects, improves blood circulation and tissue nutrition, promotes skin turgor, reduces symptoms of depression, and activates mental processes.

The healing effect of color/light is carried out on the skin in the area of the reflex zones. For this purpose, Zakharyin-Geda Zones, zones on the face, feet and palms described by ancient Chinese healers are used (see Appendix 6, 7). Each zone on the human body is directly or indirectly related to a particular organ or system of organs, and their functions. The exposure of areas and underlying tissues changes the tone and the filling of vessels of the microcirculatory system, the metabolism of dermal cells and activates the level of metabolic processes of all skin layers and subcutaneous fatty tissue. Irritation of the receptor apparatus of the skin, mucous membranes and underlying tissues through the nervous system affects the functional systems of the body.

To carry out electromagnetic-quantum exposure, you can use special DeVita Cosmo programs (Appendix 6), recommended programs for DeVita Cosmo (Appendix 7), DelInfo program sets or create your own programs.

See Appendix 6 for methods of using special DeVita Cosmo programs.

Note: some programs have restrictions on the use depending on the time of day and age. (see DeVita Ritm mini program description).

3. Electropuncture exposure.

The DeVita Combi generates weak electrical currents (pulsed currents) as an electropuncture device.

The effect is carried out on the biologically active points (BAP) or reflex zones located on different parts of the body. The reflex zones contain projections of internal organs. When the projection points are irritated, a reflex mechanism is triggered in the body, which can connect the activity of nerve endings; vascular mesh and start biochemical processes. All of this leads to a relief of pain and a healing process.

The combination of electromagnetic regulatory action and electro-puncture (HV) is possible to enhance the healing effect. The latter can be done in two ways: HV STEP and HV RAMPING. For the HV STEP method, sets of frequencies and exposure zones are proposed to solve the corresponding problems (see Appendix 8). You can also choose an individual set of frequencies by yourself. In this option, the frequencies will switch one after the other in the order you specify. The desired frequency range is set for the HV RAMPING direction, which will be carried out automatically according to the "swing" principle.

Area of application of Devita Combi

The device can be used for the following cases:

- dysfunction in any system of the body;
- traumatic injuries;
- inflammatory reactions;
- colds and other infectious diseases;
- stress and irritability;
- a decrease in performance;
- decreased skin turgor, skin paleness.

Usage Limitations

For electromagnetic and quantum exposure:

- presence of an implanted organ
- first trimester of pregnancy

For electropuncture exposure:

- the presence of malignant neoplasms;
- presence of an implanted organ;
- pregnancy;
- myocardial infarction within the 2 last months;
- individual intolerance to electric current;
- skin lesions and diseases in the areas of electrostimulation.

The order of the sessions

DeVita Combi allows the user to perform the procedure himself after studying the user manual.

The device is easy to use, and the degree of its effect is regulated by the duration of the sessions.

1. During a session of electromagnetic exposure, it is necessary to:

- get the device ready to work;
- place the Ritm or AP Antenna near the body (up to 150 cm)
- select the desired program;
- run the program;
- use the **"PAUSE"** button to interrupt the session for a short period of time (up to 59 minutes).

The course of use depends on the solution of the respective problem and can last from 7 to 30 days for destructive, and from 30 days to six months for the regulatory effect with daily use.

For details, see Appendices 1-4 for the respective devices for more details.

In case of undesirable reactions (dizziness, fatigue, loss of appetite, pain, drowsiness), the next session is skipped and the period of work with the devices is increased. It is obligatory to follow a water drinking schedule!

2. During a session of quantum exposure, it is necessary to:

- get the device ready to work;
- select the mode of the desired exposure (quantum or electromagnetic-quantum);
- take a comfortable position;
- place the Ritm Antenna (in case of joint action) near to your body (up to 150 cm), and hold the quantum console in your hands;
- determine the area of exposure on the body;
- remove clothes from the affected area (the skin must be clean);
- select the desired program;
- run the program.

For QUANT sessions, the surface of the skin is divided into zones, making it easy to navigate and expose the desired areas. The exposure zones are shown in the figures (Appendix 6, 7). During the session make circular or linear movements with the quantum console over the recommended zone, 2-3 cm from the skin surface at a speed of 1-2 cm/sec.

When working with the Quantum console in the face area, it is advisable to close your eyes, as the bright light may cause unpleasant sensations. In the area of the thyroid gland (the front of the neck) it is not recommended to work with the console!

Exposure of the skin areas according to the proposed schemes should take into account the sequence of action. During the session, it is necessary to influence all the zones specified in Appendices 6 or 7 for the current session.

Appendix 7 shows the sets of frequency for solving certain problems, and the cycles of their use, taking into account the zones of exposure. The cycle consists of 4 sessions, one after the other each day. The most significant effect occurs as a result of a course of use. A course is several cycles repeated one after another.

When working on the areas in Appendix 7, its duration is 3-4 cycles (9-12 days), then you need to take a break (10-14 days) and repeat the course again.

When working on Appendix 6 areas the course is 1 month of daily use, then a break (7-14 days). To maintain the effect, you can do it once or twice a week.

When working with the quantum console, the program running time is reduced by a factor of 2, as compared to similar programs of the electro-magnetic exposure mode. This is due to the fact that the effectiveness of the complex effect is higher, and it takes less time to get a good effect.

It should be noted that during application there may be discomfort in the form of discomfort, nausea, weakness, etc. In this case it is necessary to increase the interval between sessions. For example, conduct them in one or two days.

The room where the quantum exposure sessions are held should be slightly darkened (curtains, blinds) or have dim lighting. The session is performed one hour after meals or physical activity.

When the session is over, sit or lie down quietly for a few minutes. This time is necessary to fully assimilate the action of the device.

3. During a session of electropuncture exposure, it is necessary to:

- get the device ready to work;
- select the mode of the desired exposure (electro-puncture or electro-magnetic-electropuncture);
- determine the area of exposure on the body;
- remove clothes from the affected area (the skin must be clean);
- remove jewelry, watches, personal communication devices (cell phones, etc.);
- take a comfortable position;
- select the desired program;
- place the electrodes in the exposure zone;
- run the program.

Use the table in Appendix 8 to determine exposure zones.

The minimum course of electropuncture exposure is 3-5 sessions. The course can be prolonged until a positive result is achieved.

If unwanted reactions occur (dizziness, fatigue, skin irritation, etc.), the next procedure is skipped and the period between procedures is increased.

The use of a set of methods in the process of recovery provides a stable positive effect and reduces the recovery time.

Safety precautions for sessions

The operation of the device should be carried out in accordance with the requirements of the Instruction manual and these Guidelines.

Appendices

Appendix 1 – "The list of manual programs DeVita Ritm".

№	The name of the program	Program description
1	Active protection	<p>The human body exists in an ever-changing environment, to which it is necessary to adapt. It is adversely affected by changes in temperature and atmospheric pressure, electromagnetic radiation from household appliances and office equipment, and frequent stresses. The body is also affected by physical and mental stress, a constantly changing mode of operation. The program normalizes the functioning of the nervous and endocrine systems, increases working capacity, attentiveness, gives tone, relieves from fatigue and irritability. Protects from pathogenic radiation.</p> <p>Application: The program is used daily in the morning or afternoon. It is part of the "Healthy Day" and "Complete Cleansing" automatic programs. Attention! It is not recommended for use in the evening and at night.</p>
2	Blood circulation regulation	<p>A sedentary lifestyle, bad habits, poor nutrition, stress negatively affect the state of the circulatory system. The program restores local and general blood circulation, regulates oxygen uptake, improves blood supply to all organs.</p> <p>Application: The program can be used at any time of the day if necessary.</p> <p>Attention! It is not recommended to use the program for 2 months after myocardial infarction.</p>
3	Digestion	<p>Factors such as a violation of the diet, the transition to unusual foods have an increased load on the gastrointestinal tract. This causes indigestion, flatulence, pain and discomfort. The program has a beneficial effect on the work of the gastrointestinal tract, helps the body absorb food more easily, reduces the risk of eating disorders, reduces the feeling of heaviness and discomfort, and relieves heartburn and intestinal cramps.</p> <p>Application: The program can be used at any time of the day, optimally - from 19:00 to 21:00. Reuse if necessary after 0.5 hours.</p>

4	Detoxification	<p>In the process of life, toxins accumulate in the body. They accumulate both in the intercellular substance and in the cells of organs. Toxins disrupt metabolic processes and create a favorable environment for the propagation of pathogens. The program activates the activity of excretory systems and helps to cope with the removal of toxins from the body, and also regulates the liver and gall bladder.</p> <p>Application: The program can be used at any time of the day. Be sure to drink clean drinking water – 1-1.5 liters per day.</p>
5	Anti-stress	<p>Almost every day we experience stress: at work, on the road, at home. Usually the psyche neutralizes the effects of stress, but with a constant layering of negativity or with a sharp change in the rhythm of life, the body needs help. The program will help in a difficult situation, with psychological or physical stress. It normalizes the functioning of the nervous system, promotes quick falling asleep and good sleep. For severe nervous agitation, use in conjunction with the Healthy Sleep program.</p> <p>Application: The program is used before bedtime. The device should be located under the pillow. If at the end of the program sleep does not occur, you must repeat the session.</p>
6	7 Chakra	<p>Humans are complex energy structures, the basis of which are seven chakras located along the spine. Each chakra is associated with certain organs; if the chakras are damaged, the functioning of their corresponding organs is disrupted. The chakras accumulate energy. Negative energy clogs the chakras and has a detrimental effect on the body as a whole. The program restores lost energy, distributes it correctly and thereby restores the functioning of organs and systems.</p> <p>Application: The program is used in the daytime.</p>

7	Hormones normalization	<p>The endocrine system regulates the activity of organs with the help of hormones and ensures the constancy of the internal environment (homeostasis). The endocrine system is involved in the development of the body, its growth, reproductive function. It also regulates the mental state and emotional reactions. The program normalizes the function of the hypothalamus – pituitary – adrenal – gonadal system and regulates excretory processes in the body.</p> <p>Application: The program can be used at any time of the day, daily for at least a month. Included in the automatic programs “Healthy Day” and “Complete Cleansing”.</p> <p>Attention! Not recommended for use by children under 13 years of age.</p>
8	Clean kidneys	<p>The functions performed by the kidneys are diverse. The main one is the regulation of water and electrolyte metabolism in the body, maintaining a constant volume and pressure of blood and other fluids. The kidneys also regulate the acid-base balance in the body. They excrete products of nitrogen metabolism – urea, creatinine, uric acid, etc. Nutritional disorders (especially excessive meat consumption), metabolism, vitamin A deficiency, hypothermia, and infection cause contamination of the kidneys, the formation of sand and stones. The program promotes the active removal of toxins from the body, regulates the functioning of the kidneys, and prevents the formation of kidney stones.</p> <p>Application: The program can be used at any time of the day, optimally - from 17:00 to 19:00. In case of toxic or infectious lesions of the body - repeat after 0.5 hours. For the normal functioning of the kidneys, be sure to use clean drinking water – 1-1.5 liters per day.</p> <p>Caution: During this program, increased urination may be observed.</p>
9	Clean lymph	<p>The lymphatic system is around the clock guarding the purity of the body. It plays an important role in the removal of metabolic products, as well as in maintaining immunity. Naturally, lymph is cleansed by passing through the lymph nodes, but sometimes this is not enough.</p>

9	Clean lymph	<p>In violation of the functions of the lymphatic system, up to 83 harmful substances accumulate in the inter-cellular space. This increases the load on all organs of excretion: liver, intestines, kidneys. The program helps to liquefy the lymph, remove toxins and excess water from the body, improves metabolism in cells, normalizes blood pressure, and boosts immunity.</p> <p>Application: The program can be used at any time. During the operation of the program, it is recommended to carry out a light massage in the form of stroking (without effort).</p> <p>Caution: For the most effective removal of toxins, use clean drinking water – 1-1.5 liters per day.</p>
10	Healthy eyesight	<p>A constant load on the eyes (reading, working on the computer), as well as a change in conditions and rhythm of life, cause eye fatigue and irritation, and reduced vision. The program reduces eye strain, relieves from fatigue and pain, and helps normalize vision.</p> <p>Application: Use before bedtime daily for 7 days. After 7 days, use it every second day. Repeat sessions until the desired result is obtained. After the end of the program, do not strain your eyes. For best results, combine with exercises for the ciliary muscle.</p>
11	Female sexuality	<p>Sexual desire is an indicator of different conditions of a woman. If a woman ceases to be interested in sexual life, it can be assumed that the disease has arisen. In most cases, a decrease in sexual desire develops with a combination of several factors - somatic, mental and micrososomal. The program will help in the absence or decrease in a woman's sexual desire, weaken the feeling of emotional stress, mental discomfort, and strengthen sexual desire.</p> <p>Application: daily 1 time per day.</p>
12	Male sexuality	<p>The manifestation of male attraction depends on age, physical exertion, nervous and mental state, external stimuli, etc. Stress, problems at work, various complexes lead to psychological impotence in men. As a result, they become wary of the appearance and "quality" of an erection, compare, analyze. And the more a man prepares for this "event", the less chance he has of success.</p>

12	Male sexuality	<p>The program is aimed at psychological correction, regulation of the 6th chakra, relieves anxiety and strengthens confidence in the favorable completion of intimacy.</p> <p>Application: daily 1 time per day.</p>
13	Recovery from injuries	<p>Injuries, dislocations, fractures lie in wait for both supporters of various sports and ordinary people. In combination with medical care, the program speeds up the healing process, reduces pain, relieves swelling, eliminates hemorrhages, and restores muscle elasticity.</p> <p>Application: for injuries daily 2-3 times a day until the desired result is obtained. If necessary, combine with the "Joints without inflammation" and / or "Joints without pain" programs.</p>
14	Warm-up	<p>Often, gym visitors lack energy and motivation, especially after a working day. The Warm-up program energizes, increases the intensity of training, helps to overcome fatigue, increases metabolic processes in muscles and makes training more effective.</p> <p>Application: before each workout.</p>
15	Workout	<p>Successful and active training often leads to fatigue and muscle pain, which do not make it possible to achieve greater results. The program increases muscle strength, relieves muscle fatigue, strengthens muscles, improves the supply of blood and oxygen to muscles, increases endurance, and allows you to achieve maximum results with minimal cost to the body.</p> <p>Application: The program is used during training.</p> <p>Attention! It is not a doping program.</p>
16	Healthy Heart	<p>The supply of organs with oxygen and nutrients depends on the work of the heart, which means the effective work of the whole organism. Malfunctions in the activity of the heart are caused by an improper lifestyle, stress, and physical overload. The program regulates complex blood circulation and blood pressure, provides normal blood supply to the heart muscle, and promotes self-regulation of the heart and its stable operation.</p>

16	Healthy Heart	<p>Application: Use at any time, once, twice, if necessary (optimally – from 11:00 to 13:00).</p> <p>Attention! It is not recommended to use the program within 2 months after myocardial infarction.</p>
17	Cardiac rhythm normalization	<p>When the heart beats as it should, we do not notice its work. But if it begins to stray from its rhythm, it brings great discomfort. Arrhythmias can occur in healthy people for various reasons – as a reaction to tight clothing, insect bites, certain medications, stress, plentiful food, and problems with bowel movement. The program restores the heart rhythm, improves blood circulation to the heart, normalizes the nervous system.</p> <p>Application: The program is used for heart rhythm disturbances 1 time per day.</p>
18	Anti-Cold	<p>The first signs of a cold are a stuffy nose and a sore throat. Often we do not pay attention to these symptoms which leads to complications, the most common of which are upper respiratory tract infections – sinusitis, bronchitis, and otitis media. The program activates the immune system, increases resistance, reduces the likelihood of complications, reduces swelling, promotes better discharge of mucus from the sinuses of the nose, and helps to recover in a short time.</p> <p>Application: The program can be used at any time of the day, during the off-season or epidemic of colds, use daily. It alleviates the condition with allergies.</p>
19	Free breath	<p>Bronchospasm (cough) is a protective reaction of the body to an irritant, respiratory tract infection, and may also be a consequence of the effects of certain drugs on the body. Bronchospastic syndrome is characteristic of people with a tendency to allergies and those suffering from bronchial asthma. The program restores the functions of the bronchopulmonary system, normalizes lung function, regulates blood supply and oxygen absorption, and relieves from spasms.</p> <p>Application: daily as needed at any time of the day. With cramping and severe coughing – up to 2-3 times in a row.</p>

20	Women's Health	<p>Bad ecology, bad habits, the sun adversely affect the female body, accelerate the aging process and cause problems in the female body. The program covers a wide range of women's issues and is useful at any age. Reduces premenstrual tension, pain, corrects menopausal disorders.</p> <p>Application: Girls at puberty are recommended to use it 1-2 times a week. For women experiencing pain and discomfort during menstruation – daily during this period. For the effectiveness of the impact in the correction of problems in the sexual sphere and / or in violation of the organs of the female reproductive system – daily in combination with the program "Female sexuality".</p> <p>Attention! It is not recommended to use the program during pregnancy or if a woman wants to become pregnant.</p>
21	Men's Health	<p>Man's health is not only a healthy potency, but also the proper functioning of the rest of the internal organs. It is necessary to take care of male health from youth. The program is designed to harmonize the male genitourinary system. It regulates the processes of urination, the work of the male sex glands, including the representative. The older the man, the more useful this program.</p> <p>Application: The program is used once a week, optimally from 21:00 to 23:00. For problems with potency and / or prostate every day in combination with the program "Male sexuality", "Stop Prostatitis".</p>
22	Healthy sleep	<p>Healthy sound sleep is an important component of the life of any person. During sleep, the body restores the energy spent during the day. However, any psycho-emotional upheaval can serve as an impetus for the development of sleep disorders. Which, in turn, provokes the development of both physiological and mental disorders. Irritability, fatigue, inability to concentrate are the very first signs of a sleep disorder. The program helps to reduce the excitability of the nervous system, quickly fall asleep, normalizes sleep phases.</p> <p>Application: daily at night, it is possible to reuse the program up to 2-3 times.</p>

23	Good mood	<p>Depression, anxiety, fear - these concepts are interconnected. Anxiety and fear are a signs of depression. Very often, this condition leads to psychosomatic diseases, emotional exhaustion, self-dissatisfaction. Fears are powerful factors that prevent a person from discovering his abilities and achieving success. The "Good mood" program allows you to stop a depressive state, reduce anxiety, normalize sleep, and improve mood and mental activity.</p> <p>Application: daily, 1 time, during the day.</p>
24	Joints without pain	<p>Joint or spinal pain can have several causes. Most often, this is a pinched or inflammation of the nerves, which occurs due to a sedentary lifestyle, bruises, falls, being overweight, spinal disc herniation, hypothermia, active physical exertion, and destruction of cartilage tissue or inflammation of the joint bag. The program helps to reduce pain, improve blood microcirculation, normalize muscle tone, ligaments, cartilage, activates metabolic processes in damaged tissues.</p> <p>Application: in case of exacerbation, use the regimen a support to the main therapy and in combination with the «Joints without inflammation» program. Daily, at any time of the day, for 2 weeks, then every second day, then repeat the course until the desired results are obtained.</p>
25	Joints without inflammation	<p>Every third inhabitant of our planet experiences pain or a crunch in the joints and spine. The causes of this problem may be infections, injuries, allergic reactions, being overweight, professional sports, improper nutrition, etc. The program improves blood supply to the damaged area, relieves from inflammation, swelling and pain. It has established itself as a supportive and restorative means during the period of "active successful work", as well as in sprains and severe muscle fatigue.</p> <p>Application: daily for a month, starting 2 weeks before active actions in the country or sporting events. Then 1-2 times a week until the end of the season. For people with periodically worsening problems of the back and joints, in order to maintain health 2 times a year daily for 1 month. If an exacerbation occurs, combine with the Joints Without Pain program.</p>

26	Intestine without problems	<p>How many of us have experienced symptoms such as bloating, nausea, bowel problems, decreased appetite, and abdominal pain? All these are indicators of intestinal abnormalities. These symptoms appear not at the initial stage, but when the disease has turned into a chronic form. To reduce pain, remove nausea and bloating, and normalize bowel movement, use the Intestine Without Problems program.</p> <p>Application: daily as needed and depending on the condition 1-2 times a day.</p>
27	Digestion normalization	<p>Metabolism is a combination of chemical reactions that ensure the normal functioning of the body. The main factors of metabolic disorders are: malnutrition, the use of certain medications, stress, a sedentary lifestyle. Due to metabolic disorders, diseases such as diabetes, gout, obesity, allergies, cardiovascular disorders, growth retardation and development in children can occur. The program is aimed at the balanced functioning of the thyroid and pancreas, the proper assimilation of potassium, calcium, magnesium, sodium, and the alignment of acid-base balance.</p> <p>Application: as needed 1-2 times a day.</p>
28	Beautiful skin	<p>Skin problems arise due to a malfunction of the internal organs - in this case, the skin takes on the function of cleaning. Acne, vascular defects, pigmentation, etc. appear on the face. This is faced by adolescents experiencing hormonal changes, and people suffering from disorders of the endocrine and digestive systems. The program normalizes the work of the skin glands, enhances the barrier function of the skin, improves the metabolic processes in the cells.</p> <p>Application: 1-2 times a day until the desired result.</p>
29	Beautiful hair and nails	<p>Hair loss, dandruff, brittle nails - indicators of disorders of the body or the negative impact of the environment. The program helps improve blood microcirculation, enhance cellular metabolism and cell regeneration. This leads to the strengthening of hair follicles and nails, stimulating hair growth, increasing the protective functions of the skin.</p> <p>Application: daily, until the desired result is obtained.</p>

30	Without allergens	<p>Allergens are substances to which the body is hypersensitive due to a disturbed immune response mechanism. They surround us everywhere: on the street, at home, at work. Common allergens are plant pollen, dust, animal hair, medicines, household chemicals, etc. The body can respond to these substances with symptoms such as lacrimation, swelling of the mucous membranes, skin rashes, etc. The program alleviates allergy symptoms, normalizes the functions of the immune system.</p> <p>Application: daily as needed. People allergic to flowering plants are advised to start using 1 month before flowering.</p>
31	Immune protection	<p>The immune system is a very complex, self-regulating, self-learning and multi-level complex. Thanks to its well-coordinated work, biological protection is ensured. The program reduces the load on the liver, activates the work of the thymus, spleen and lymphatic system, and promotes rejuvenation and longevity.</p> <p>Application: daily or every other day, at any time of the day. It is part of the "Health" automatic program.</p>
32	Healthy kidneys	<p>The program is used to remove excess fluid from the body, as well as salts that have the ability to retain it in the tissues. The program has a pronounced diuretic effect, and also helps to restore the physiological function of the kidneys and reduce swelling.</p> <p>Application: daily as needed for a month.</p>
33	Vegetative regulation	<p>The autonomic nervous system controls many of the body's life support functions. Problems in its work can be expressed in violation of the heart rhythm, changes in blood pressure, excessive sweating, fatigue, weakness, brittle hair and nails, etc. The program is aimed at restoring the ANS functions, activating the brain, normalizing metabolism, heat transfer, appetite, cell regeneration.</p> <p>Application: daily or every other day, at any time of the day. It is part of the "Health" automatic program.</p>

34	Cellular respiration	<p>Hypoxia - oxygen starvation, which may be caused by a lack of oxygen entering the body or the termination of its absorption by body tissues. The program helps to improve the blood supply to the head, heart and lungs, the active absorption of oxygen by the blood, relieve vasospasm, reduce acidification, and eliminate toxins.</p> <p>Application: daily or every other day, at any time of the day. Included in the automatic program "Health".</p>
35	Healthy joints	<p>Pain in the joints can occur not only in older people, but also in young people. Pain is associated with inflammatory reactions, accompanied by swelling, redness of the skin, restriction of movement. The causes of this problem can be: infections, metabolic disorders, injuries, being overweight, large mechanical and functional loads. The program helps to improve the condition of damaged joint tissues, and to reduce pain.</p> <p>Application: daily for a month. It is recommended to be used in conjunction with the "Joints without pain", "Joints without inflammation" programs. The most effective program for performing light exercises on a problem joint.</p>
36	Stop prostatitis	<p>The prostate gland is an organ that performs a number of necessary functions: reproductive, secretory, and barrier, controls the outflow of urine, and affects the psychoemotional state. The gland is very vulnerable to various types of pathological processes. Factors that disrupt the functioning of the prostate can be both external (poor ecology, ionizing radiation, stress, passive lifestyle, exposure to infectious agents), and internal (genetic predisposition, concomitant chronic and acute diseases, bad habits). The program is aimed at reducing inflammatory processes and normalizing the gland.</p> <p>Application: daily for 1-3 months. It is recommended to combine with the "Men's health" program.</p>
37	Balanced nervous system	<p>Nervous overexcitation is a consequence of stress accumulated over a certain period of time. This can occur in the form of: insomnia, depression, muscle or headaches, irritability, mood instability, etc. The program removes nervous excitement, harmonizes the work of the nervous system.</p>

37	Balanced nervous system	Application: with great psychological stress every day at the end of the working day and / or before bedtime.
38	Recovery after training	<p>During training, the body activates the metabolism, which leads to the accumulation of metabolites. The load on the autonomic system increases, microtraumas of muscles, their soreness, etc. can be observed. Not everyone can withstand such discomfort, and as a result, they stop further training. The program relieves muscle fatigue, promotes the rapid withdrawal of metabolites and the maintenance of the nervous system.</p> <p>Application: after any kind of training.</p>
39	Healthy venous system	<p>We pay attention to the problem with veins when blue protruding "snakes" are formed on the legs (most often), delivering, initially, aesthetic discomfort. And further leading to other functional disorders. Most often, the cause of this problem is a person's lack of mobility, lack of training or regular walking, hours of sitting behind the wheel or at a computer monitor, and long-term wearing high-heeled shoes. The program helps to relieve pain and swelling, strengthen the venous wall and increase its tone, reduce inflammatory reactions, improve blood circulation in the capillaries.</p> <p>Application: if necessary (with severity, leg fatigue), or daily (in the presence of varicose veins). It is advisable to use the program at night or before bedtime. In the second case, put a folded blanket or pillow under your feet so that your legs are in a raised state. After the session, do not get up for 30 minutes.</p>
40	Without headache	<p>A headache can cause a lot of problems. The causes of a headache are different: blood pressure drops, intoxication, autonomic dysfunctions, osteochondrosis, etc. The program is aimed at eliminating pain, relieving vascular spasms, improving blood supply and nutrition of brain cells.</p> <p>Application: as needed at any time of the day. If at the end of the program the pain persists, repeat the session after 20-30 minutes.</p>

41	Normal blood sugar	<p>Elevated blood sugar can be observed in humans under the influence of a number of factors: hard physical or intense mental work; carbohydrate-rich foods; severe stress, panic attacks; taking medications, functional circulatory disorders. Monitor your blood sugar regularly. To prevent the development of a more serious disease, use the "Normal blood sugar" program, which will help normalize the pancreas.</p> <p>Application: daily for a month, then as needed. It can be combined with the programs "Digestion normalization" and "Healthy Pancreas".</p>
42	Functional memory +	<p>The human brain contains a large amount of knowledge. With age, as well as with great mental stress, a decrease in the process of memorization can be observed and memory is not always capable of issuing the necessary information. The program activates brain activity and the process of memorization, and, in combination with a healthy lifestyle, sets up the psycho-emotional component of a person to be positive.</p> <p>Application: The program is recommended to be applied daily in the morning and afternoon, preferably in the process of studying the necessary material.</p>
43	Nervous System – General	<p>After tick bites, very often there may be signs of a malfunction of the nervous system, expressed as headache, fatigue, insomnia, depression, impaired movement of the facial muscles, malfunctions in the functioning of the optic nerve, etc. The program maintains the nervous system in a harmonious state, brings all its departments are coordinated to work together, establishes the functional and psychological state of a person, and regulates mental processes and mood.</p> <p>Application: within 1-6 months. See the "Lyme Disease" complex.</p>
44	Healthy Ears	<p>Inflammation and pain in the ears can occur as a result of injuries, damage to various infectious agents: viruses, bacteria, fungi. The problem can occur at any age, more often observed in children and the elderly. The program is aimed at restoring the mucous membrane of different parts of the hearing organ, reducing discomfort in ear diseases, and improving hearing.</p>

44	Healthy Ears	<p>Application: daily for 1-2 weeks. Alternation with the DeVita AP program "Ears without inflammation" is desirable.</p>
45	Throat Without Problems	<p>Sore throat is a problem that occurs in both adults and children in different periods of the year. The reasons may be: decreased immunity, infectious diseases of the upper respiratory tract, carious teeth, gum disease. The program helps maintain local immunity, restore the nasopharyngeal mucosa, reduce pain, swelling, and hoarseness.</p> <p>Application: daily for 1-2 weeks. Alternation with the DeVita AP program "Throat without pain" is recommended.</p>
46	Strong teeth	<p>Gum disease is a very big problem for a person, causing not only discomfort, but also capable of leading to tooth loss. The reasons are often: decreased immunity, impaired blood circulation, bad habits. The program helps to normalize blood microcirculation, strengthen gums, and repair damaged mucous membranes, thereby improving the condition of the oral cavity and teeth.</p> <p>Application: daily for 1 month, see the complex «Healthy teeth».</p>
47	Healthy Pancreas	<p>The pancreas performs two main functions in the body: externally and intracretory. An imbalance in the functioning of the gland can lead to serious problems in terms of the functioning of the digestive system and metabolic disorders. The program helps to normalize the functions of the gland in various disorders.</p> <p>Application: daily for 1-6 months. It can be combined with the programs "Digestion normalization" and "Normal blood sugar".</p>
48	Healthy Thyroid	<p>The thyroid gland is part of the human endocrine system, which plays a very large role in the body. If its functioning is disturbed, an imbalance in the work of the cardiovascular, respiratory, urinary, reproductive systems, as well as metabolic and fluid disorders may appear. The program provides support to the thyroid gland under various stresses, normalizing its functioning and metabolic processes in the body.</p> <p>Application: daily for 1-6 months. It can be combined with the program "Digestion normalization".</p>

Appendix 2 – "The list of manual programs DeVita AP".

№	The name of the program	Program description
1	No staphylococcus	<p>According to statistics, 20% of the population are regular carriers of staphylococcus. Staphylococcus is a fairly common causative agent of infectious diseases affecting the skin, soft tissues, upper respiratory tract, and also the musculoskeletal system. The main cause of infection is often the hospital and doctors who become chronic carriers of bacteria and people who have taken antibiotics. Staphylococcus cause secondary diseases with influenza, wound infections, postoperative suppuration, and can also cause food poisoning. The program removes the cause of the infection, which can have a detrimental effect on the human body. It is also effective as a complex treatment for diseases caused by these bacteria.</p> <p>Application: daily up to 2 weeks, depending on the stage of the infection.</p>
2	No streptococcus	<p>Streptococcus is a widespread group of microorganisms. They usually live in the skin of a person, in the respiratory tract, intestines. They can cause acute inflammation of the ENT organs, urinary system, organs of the abdominal cavity, skin and soft tissues. Streptococcal infection is more severe than staphylococcal infection, which can lead to the appearance of joint, heart, kidney damage, sinusitis, etc. The program is effective for complex treatment, and separately.</p> <p>Application: daily up to 2 weeks.</p>
3	No chlamydia	<p>Chlamydia cause sexually transmitted infections. Chlamydia are often asymptomatic, or with minimal manifestations. The organs of the genitourinary sphere are mainly affected. Women are more susceptible to this infection, children can become infected when passing through the birth canal of the mother. Chlamydia can cause serious complications, therefore it is very important to take timely measures to prevent the disease, observing hygiene rules and using DeVita technologies.</p> <p>Application: daily for 2-3 months.</p>

4	No helicobacter	<p>Helicobacter Piloni is a microorganism that lives in the human stomach and duodenum and provokes the development of many dangerous diseases (gastritis, ulcers, hepatitis and many others). According to the WHO, helicobacteriosis infects 60% of the world's population. Infection occurs very easily and is often considered a family disease, because if one member of a family becomes infected, the probability of infection of the rest is 95%. Often the transmission of the parasite occurs as a result of the general use of personal hygiene products, utensils, with a kiss. Symptoms such as heartburn, bloating, pain, and heaviness in the stomach can be caused by this microorganism.</p> <p>Application: daily for 2 weeks.</p>
5	No bacteria	<p>Bacterial infections include a huge group of diseases caused by microorganisms - bacteria. The most important in the development of diseases caused by a bacterial infection is the release of toxins by the bacteria, which have an inflammatory effect, cause intoxication of the body and damage internal organs. The "No bacteria" program is used to reduce the severity of intoxication symptoms and alleviate the human condition during bacterial infections of the digestive tract and respiratory system caused by such forms as pneumococcus, listeria, and Klebsiella.</p> <p>Application: daily until the disappearance of signs of infection.</p>
6	No hepatitis A	<p>In developing countries and in places where hygiene rules are neglected, the incidence of viral hepatitis A is very high. Since the virus is transmitted through dirty hands, food, water, even through salty (sea) water. If you plan to travel to Asia and Africa, you need to take appropriate safety measures: observe hygiene, drink only bottled water, use the "No hepatitis A" program at the first suspicion of the presence of infection in you or others.</p> <p>Application: daily up to 2-3 times a day, at least 1 month.</p>

7	Without toxins	<p>The program promotes the removal of toxins, improves drainage functions, as a result, immunity and vitality are increased. Use is as a detoxification program after parasitic diseases, as well as independently for a month. Unlike other detoxification programs, it does not expend the energy resources of the body.</p> <p>Application: once a day after antiparasitic programs. Included in most automatic programs.</p>
8	No herpes zoster	<p>The disease caused by this virus is called herpes zoster. If a person has had chickenpox (one of the forms of the zoster virus), the virus remains in the body in a latent form and hides in the nerve cells. With hypothermia, colds or chronic diseases, the virus comes to the surface of the skin with the formation of characteristic rashes on it and strong pain along any sensory nerve. The program is aimed at the destruction of the virus and the removal of the main signs of its manifestation.</p> <p>Application: daily up to 3-4 times a day until the disappearance of undesirable manifestations. At least for 1 month. In conjunction with the "No herpes" program.</p> <p>Attention: the program is not used for chickenpox.</p>
9	No herpes simplex	<p>Herpes simplex has been known to mankind since ancient times. Every third person can be a virus carrier. It is localized on the mucous membranes of the lips, mouth, genitals. A decrease in immunity during hypothermia or overheating, during infectious diseases or during the period of menstruation in women contributes to the appearance of unpleasant rashes on the mucous membranes. The virus is transmitted primarily through contact with body fluids of an infected person (blood, saliva, sperm, mucous secretions). The program effectively reduces herpetic burden and prevents the appearance of signs of infection on the mucous membranes.</p> <p>Application: at the first sign of a rash every 3 hours, and then 1-2 times a day for 1 month. In conjunction with the program "No herpes».</p>

10	No herpes	<p>Virus carriers are more than 90% of all people on the planet. You can get infected in various ways: through saliva, sex, hygiene items, as well as by airborne droplets. At the beginning, the disease can be asymptomatic, then characteristic signs appear: headache, malaise, fever, herpetic eruptions. The program will help reduce recovery time and reduce inflammatory and pain manifestations.</p> <p>Application: 1-2 times a day for a month in conjunction with the “No Herpes Zoster” or “No Herpes Simplex” program.</p>
11	Healthy lymph	<p>Lymph is the liquid tissue of the body. It plays a very important role in maintaining water balance, homeostasis of the microenvironment of cells and capable of leaching pathological microorganisms and toxins from tissues. In case of insufficiency of lymphatic circulation, the lymph does not cope with its main tasks, which leads to the emergence of a pathological process. The program helps to normalize lymphatic outflow, strengthen the walls of lymphatic vessels, improve the condition of lymph nodes, which leads to a decrease in swelling and better discharge of metabolites from the tissues. When using the program, the body's defenses increase.</p> <p>Application: if necessary, use 1 time per day or according to the schemes of the complexes (included in the “Cleansing” automatic program).</p>
12	Anti-Cold	<p>The common cold is one of the most common infectious diseases in the world. The causative agents are respiratory viruses (adenoviruses, respiratory syncytial virus) that affect the upper respiratory tract (nose, pharynx, trachea, larynx). Diseases caused by this group of viruses are contagious, because they are transmitted by airborne droplets and are not treated with antibiotics. Complications after a cold - rhinitis, sinusitis, otitis media and more. Very often, an attenuation of the weakened organism can result in the accumulation of a bacterial infection. Therefore, it is advisable to use this program in combination with the antibacterial “No Staphylococcus”, “No Streptococcus”.</p>

12	Anti-Cold	<p>The program is aimed at reducing inflammation of the mucous membranes of the nose, throat, bronchi and activation of local immunity.</p> <p>Application: at the first sign of a cold the first 3 days – up to 2-3 times a day. Then 1 time per day for 7-14 days.</p>
13	No mould & fungi	<p>Microscopic fungi are ubiquitous. A modern heated apartment or private house is an excellent place for mould and fungi. Favorite mold habitats are bathrooms, libraries, and poorly ventilated living spaces. Fungi can enter the body through food, water, air, contact with old dusty things. Mold fungi cause allergies, not only respiratory, but also cause allergic reactions on the skin. Mold can penetrate the skin barrier wherever we bathe, where we walk barefoot, wherever there are conditions for mold (humidity, temperature, organic residues in the form of dirt or skin fat). Fungi and mold cause diseases of the respiratory organs, gastrointestinal tract, skin with a change in the tissue of these organs. To prevent fungal infections and reduce the occurrence of allergic reactions, it is recommended to use the "No mould & fungi" program. The program is effective against aspergillus.</p> <p>Application: 1-3 times a day for 4 weeks. For problems with skin and nails, use the program in conjunction with the «No fungi» program.</p>
14	No candida	<p>The program protects you from infection with such a common fungus as candida. It is part of the natural microflora of the intestine, vagina, and mouth. But with a decrease in immunity, candida begins to multiply actively and harms the body. Diseases are also caused by pathogenic candida, which enter the body through food, through household items, after the use of potent antibiotics, during intercourse with an infected partner. Symptoms are manifested in the form of allergic rashes on the skin, pain and burning in the genitals, dysbiosis. Prevent candida from multiplying using the «No candida» program.</p> <p>Application: the program should be applied 1-3 times a day for 2-4 weeks. Use in conjunction with the "No protozoans" program".</p>

15	No fungi	<p>Human fungal diseases belong to the group of infectious diseases caused by pathogenic fungi. The main danger of fungal diseases is that often the areas affected by the fungus are an open road for pathogens of many different infections. Most often, fungi affect the skin, its derivatives (hair, nails), mucous membranes of internal organs. Treatment requires an integrated approach and hygiene. The program actively fights against such fungi as trichophyton, microsporum, and mucor.</p> <p>Application: In order to prevent infection with fungal infections, it is recommended to use the program every time after visiting the sauna, pool, beach, communicating with an infected person. If there is a fungal infection in the body, the program is used 1-2 times a day for a month.</p>
16	No protozoans	<p>The program protects you from the negative effects of a large number of protozoa. Every fifth person suffers from them, and becomes infected through dirty hands or dirty food and water. The infected person experiences severe abdominal pain, bloating, constant feeling of fatigue, depression. The liver and pancreas may be affected. Of course, all these signs interfere with your life, and besides, you can infect your loved ones. The program works on the amoeba, lamblia, destroying them. Observing the rules of personal hygiene, as well as the "golden rule" - not to drink tap water and regularly using the program "No protozoans" as a preventive measure, you will be protected from these microorganisms.</p> <p>Application: it is recommended to use the program 1-2 times a day for 10-14 days. With re-infection, it is necessary to identify the sources of infection.</p>
17	Intimate health	<p>The causative agents of diseases of the genitourinary system are many and often the cause of the disease is not one microorganism, but several. Infections can occur in acute or chronic form. Chronic infection over time can cause narrowing of the urethra, inflammation of the joints, that can lead to infertility and increase the risk of an ectopic pregnancy. Periodically, during a cold or emotional overload, exacerbations may occur.</p>

17	Intimate health	<p>Infections are mainly transmitted through sexual intercourse, and some during birth from an infected mother to the child. Parasites such as ureaplasma can live in the body for years without causing any symptoms and not manifesting themselves. The main factor in protecting the body is the natural microflora, and modern DeVita technologies that adversely affect the parasitic flora, while maintaining the body's natural defenses. The program effectively fights against parasites such as ureaplasma, toxoplasma, mycoplasma.</p> <p>Application: daily for a month.</p>
18	No schistosomes (blood-flukes) & trematods	<p>Trematodes are flatworms that can cause a variety of serious diseases in humans. They can parasitize in the blood (schistosomes), liver, intestines, lungs. Infection occurs when chewing blades of grass, especially near ponds or while bathing in them, when eating poorly washed greens or lettuce, and also not fully cooked cattle meat, fish. The program is aimed at eliminating most types of trematodes, including schistosomes, regardless of the stage of their development and localization in the body.</p> <p>Application: daily for 14 days.</p>
19	No nematodes and ascarides	<p>With unwashed fruits, poorly prepared meat, and dirty hands, worm eggs that cannot be seen with the naked eye can get into our mouths. Worms, living in the host's body, feed on its tissues, "take food" from a person (that's why you want to eat a lot), and release toxic substances. A person is losing weight, hair is falling out, skin is peeling. The most common helminths are roundworms. They can cause damage to the wall of the small intestine, intestinal obstruction, inflammation of the peritoneum, bronchitis, focal pneumonia, hemoptysis, liver and pancreas diseases. Ascaris parasitism causes an allergic reaction, which can manifest itself in the form of bronchial asthma and skin rash. Under the action of the program, worms cease to feed, which leads to their death and the natural removal of parasites from the digestive tract.</p>

19	No nematodes and ascarides	<p>The program does not have a toxic effect on the human body. It is recommended that people with pets, small children and occupations related to working with animals regularly conduct preventive measures once every three months.</p> <p>Application: the program is used daily. A total of at least 10 sessions. After 14 days, repeat the course.</p>
20	No parasites, General	<p>Parasites are infesting the human body through the skin, and can also enter the body through food, water, and dust. Many people who lead a healthy lifestyle experience health problems due to parasites. Improving the body (proper nutrition, exercise, hardening procedures) without ridding the body of parasites does not produce a pronounced positive effect. Parasites trigger many chronic diseases: cholecystitis, cholelithiasis, pancreatitis, colitis, diabetes mellitus, bronchial asthma, and dermatitis. Problems such as chronic fatigue, irritability and anxiety, hyperactivity in children, anemia, brittle nails and hair, problem skin, headaches, appetite disorders, decreased immunity can be signals of on-going parasitosis. All parasitic diseases are terrible in that they perfectly mask as other diseases. Prevention of parasitic diseases is, first of all, observance of hygienic norms of social behavior, use of the "No parasites, General" program. These measures are aimed at maintaining your health and the health of others.</p> <p>Application: the program is used daily. A total of at least 10 sessions. After 14 days, repeat the course.</p>
21	No parasites, Digestive tract	<p>The presence of parasites in the digestive tract and liver causes the development of diseases such as cholangitis, biliary dyskinesia, cholecystitis, hepatitis. Their presence in the intestine causes inflammation of the intestinal walls and a decrease in the absorption of nutrients. Toxic substances that secrete parasites cause pain in the joints and muscles, affect the central nervous system. Contribute to the onset of depressive states, nervousness, anxiety, and sleep disturbances. The program is aimed at cleansing the body from parasites of the gastrointestinal tract, liver and pancreas.</p> <p>Application: the program is used daily for 7-10 days. After 14 days, repeat the course.</p>

22	Anti-Flu	<p>Influenza is a severe viral infection that affects people of any age. Up to 500 million people get the flu every year. In severe influenza, irreversible damage to the cardiovascular system, respiratory tract, and central nervous system occurs. The virus is transmitted very easily by airborne droplets (by sneezing, coughing, talking). The most common complication of influenza is pneumonia. The program is aimed at the destruction of various strains of influenza viruses, the removal of inflammatory manifestations.</p> <p>Application: to prevent influenza during an epidemic, the program is applied once every 2 days. If necessary - daily up to 2-3 times a day, alternating it with the "Against flu, General" program. After that it is necessary to use the "No streptococcus" program. It can be used together with the programs "No staphylococcus", "No streptococcus", "No candida" in order to avoid bacterial and fungal burden, as well as the programs "Antivirus", "Anti-cold".</p>
23	Against flu – General	<p>Influenza is a disease that affects the upper and lower respiratory tract, is accompanied by severe intoxication and can lead to serious complications. Influenza always begins acutely and quickly (48 hours pass from the moment of infection to the first signs). The main symptom of intoxication is increased body temperature (40 °C and higher). This temperature can persist for more than 5 days, which causes: shortness of breath or respiratory failure, impaired consciousness, convulsions. In people with poor health, elderly, young children, this temperature leads to an infectious toxic shock (a condition when vital organs fail). Using the program "Against flu, General" you can alleviate the patient's condition, and with the integrated use of several programs against influenza viruses, you can quickly restore your health without complications.</p> <p>Application: at the first sign of flu with increased body temperature, use the program 1-3 times in a row or alternating it with the "Anti-flu" program. Be sure to drink plenty of fluids and observe the rules of personal hygiene.</p>

24	Healthy gastrointestinal	<p>Intestinal infection - a disease that occurs when certain pathogens of viruses or bacteria enter the body. People of all ages are affected by this infection, most often children and those who take antibiotics. An intestinal infection is accompanied: nausea, vomiting, diarrhea, abdominal pain, fever. In case of viral infections, other symptoms can also be observed: runny nose and redness of the throat, as well as pain that occurs when swallowing, lack of appetite, loss of strength. The program is aimed at the destruction of the intestinal flu virus – rotavirus and pathogenic strains of E. coli, helps in the normalization of the condition and stops dehydration that is destructive for the body.</p> <p>Application: Use on the first day 4-5 times in a row to achieve a stable result. Then within 3-5 days, 1-2 times daily, alternate with the program “Drainage, General” and “Antivirus”. Be sure to drink as much water as possible.</p>
25	Help against poisoning	<p>When enterobacteria or enteroviruses are ingested to the body through food, water, through the mucous membranes of the respiratory tract, an infection develops, which is commonly known as poisoning. This infection can have a latent character or obvious signs of its presence: headache, muscle pain, in the abdominal region, fever, vomiting, impaired bowel movements. Subsequently, it can lead to serious organ damage. The program helps the body cope with the infection caused by enteroviruses and some types of salmonella, accelerates the recovery process, and reduces the likelihood of complications.</p> <p>Application: Use on the first day 4-5 times in a row to achieve a sustainable result. Then, for 3-5 days use 1-2 times daily, alternate with the program “Drainage, General” and “Antivirus”. Be sure to drink as much water as possible.</p>
26	Antivirus	<p>Viral infections are a large group of diseases caused by viruses. Viruses are a transitional form between animate and inanimate nature. Since viruses have genetic material, but do not have their own cell, they are only intracellular parasites. This is precisely the difficulty of their destruction.</p>

26	Antivirus	<p>Viruses can be transmitted by airborne droplets, through various objects, kisses and sexually. A large role in the complete extermination of viruses in the body belongs to the immune system. The "Antivirus" program is aimed at combating various viruses, and in particular the cytomegalovirus and Epstein-Barr virus. It is also used to attenuate any strains of viruses and enhance the body's immunity.</p> <p>Application: daily for a month.</p>
27	Drainage, General	<p>One of the main programs to cleanse the body of toxins. The lymphatic system is involved in the removal of toxic substances from tissues and organs. With various diseases, the amount of harmful substances increases. The lymphatic system does not have enough time to remove them and intoxication of the body may occur again. In addition, due to illness or injury, a violation of the natural outflow of contents from the wound cavity or organ is possible. Excessive accumulation of fluid containing pathogens can cause serious inflammation and deterioration of the human body. By using the "Drainage, General" program you protect your body from the excessive toxic load that it experiences with various diseases or injuries. The program is aimed at neutralizing and removing toxins from the body, while not loading the lymphatic system.</p> <p>Application: once after using any of the DeVita AP device programs. Included in the "Cleansing" automatic program.</p>
28	Drainage Antitox	<p>The intercellular matrix is the main place of accumulation of toxins, which leads to metabolic disorders, the development of many serious chronic diseases, and premature aging of the body. Tissue drainage, is a way of detoxification of the tissue sector, helps to remove salts of heavy metals and radionuclides, improves metabolic processes and the general condition of the body.</p> <p>Application: with severe intoxication daily and in conjunction with the "Drainage, General" program.</p>

29	Mexican detoxification	<p>The system of deep complete cleansing of the body, which was proposed by R. Rife. The program helps to eliminate metabolic products and toxins, improve the drainage function of the lymphatic system, increase the detoxification capabilities of the liver, activate the excretory function of the kidneys, and increase the level of immune defense.</p> <p>Application: daily for a month with serious diseases of the liver, kidneys, lymphatic system. If there aren't any, it is recommended to use the automatic program "Complete Cleansing" on the DeVita Ritm device for gentle cleansing of the body</p>
30	No allergies	<p>Allergy is an increased sensitivity of the body to any substances - products, wool, dust, pollen, chemical, infectious agents. Currently, more than 85% of the entire population of our planet suffer from its various varieties. The cause of allergies is most often malnutrition and an unhealthy lifestyle. An allergy can be recognized by an unexpected runny nose, sneezing or lacrimation, redness and itching of the skin. The program removes the main manifestations of allergies, eases the general condition, and helps stabilize the immune system.</p> <p>Application: daily if indicated and to alleviate the condition.</p>
31	Weight Control	<p>The program is aimed at combating adenovirus 36, a common cause of being overweight. In addition, when it is used, the ANS is regulated, and the processes of weight loss are launched. The program also helps in maintaining the body's energy resources.</p> <p>Application: it is advisable to use according to the scheme of the complex "BODY FIGURE".</p>
32	Without Salmonella	<p>Salmonella is a representative of the enterobacteriaceae family. Resistant to the external environment: can be stored in house dust, in open water, in frozen meat and sausages, poultry eggs, dairy products from 3 to 6 months. They perish at a temperature of more than 70 degrees. Infection is accompanied by: high fever, abdominal pain, vomiting, diarrhea. However, the infection may be without symptoms.</p> <p>Application: daily for 2 weeks.</p>

33	Without Yersinia	<p>One of the representatives of enterobacteria, which causes inflammation in the small intestine, but can also affect other organs: liver, kidneys, heart, joints. It can be found in water, soil, and food. It tolerates low temperatures, so it can be stored and multiplied in the refrigerator. In the human body, without causing signs of inflammation, it can't be located until the immune system is weakened. Then the exacerbation begins.</p> <p>Application: daily for 2 weeks.</p>
34	Without Proteus	<p>Bacteria of the genus Proteus are part of the conditionally pathogenic intestinal flora. With active growth, they cause damage to the digestive tract, urinary tract, congenital malformations, and wound infections. The pathogenicity of this type of bacteria is observed in the case of uncontrolled intake of antibiotics. Also, when bacteria enter from the outside through food, water, unwashed hands.</p> <p>Application: daily for 2 weeks.</p>
35	Without Klebsiella	<p>Conditionally pathogenic bacterium. With an increase in number occurs, it affects the organs of the gastrointestinal tract, respiratory tract, and urinary system. Causes severe intoxication with impaired functionality of these organs. Ways of infection are through food, water, when communicating with an infected person.</p> <p>Application: daily for 2 weeks.</p>
36	Without Campylobacter	<p>Campylobacter bacteria are causative agents of intestinal infection. They enter into the mucosa and lymphatic tract of the intestine and other organs. Infection occurs through agricultural animals and birds, through the use of contaminated meat products, milk, water. Less often through damaged skin, with bites of infected animals. Also transplacental or during childbirth. At risk are rural residents, livestock and poultry farmers, as well as tourists visiting developing countries.</p> <p>Application: daily for 2 weeks.</p>
37	Without Clostridia	<p>Clostridium difficile is part of the natural intestinal microflora, but due to their multiplication can cause damage to the walls of the colon.</p>

37	Without Clostridia	<p>Clostridium botulinum is an inhabitant of soil and sea water, distributed everywhere and forms the most powerful bacterial toxin known – botulinum toxin.</p> <p>Application: daily for 2 weeks.</p>
38	Without Shigella	<p>Bacteria that cause dysentery. Infection can occur by contact with an infected person or item, through water, food. Carriers can be flies and cockroaches.</p> <p>Application: daily for 2 weeks.</p>
39	Without Rotavirus	<p>The intestinal flu virus multiplies in the cells of the gastrointestinal mucosa, which leads to severe diarrhea and dehydration of the body. The main route of transmission is food.</p> <p>Application: daily for 2 weeks.</p>
40	Anti-virus Gastrointestinal	<p>Enterovirus and Koksaki virus belong to the intestinal group, are able to affect the central nervous system, muscles, heart, skin, respiratory and genitourinary systems. They are transmitted from person to person by airborne droplets and through contact with objects of everyday life. The wave of infection is higher during the warm season.</p> <p>Application: daily for 2 weeks.</p>
41	Without Trematodes - General 1	<p>Trematodes, or flukes, are parasitic flatworms that infect the liver, pancreas, intestines, lungs, blood vessels, and brain. Ways of infection: swimming in open waters of countries such as Asia, Africa, South America, eating poorly cooked or raw fish, shellfish, crustaceans, and meat.</p> <p>Application: the programs are used together, daily for 2 weeks.</p>
42	Without Trematodes - General 2	
43	Stop Amoeba	<p>Entamoeba histolytica is a representative of protozoa. It can cause amoebic dysentery, accompanied by damage to the colon, liver, lungs and other organs. It is ingested with food and water.</p> <p>Application: daily for 2 weeks.</p>

44	Without Enterococcus	<p>Enterococcus is a part of the natural human microflora. When using antibiotics, when the barrier function of the skin and mucous membranes are impaired, when older people experience serious diseases, enterococcus can cause problems in the small intestine, urinary tract, vagina, heart, liver, skin.</p> <p>Application: daily for 2 weeks.</p>
45	Without nematodes and ascarididae – New	<p>A new program to combat round parasitic worms. Affects the majority of nematode species that infect humans and animals.</p> <p>Application: daily for 2 weeks.</p>
46	Stop Adenovirus – General	<p>Adenoviruses are a group of viruses that cause acute diseases, with damage to the respiratory system, eyes, and lymph nodes. Infection occurs by airborne droplets, often in the cold season.</p> <p>Application: daily for 2 weeks.</p>
47	Stop Coronavirus	<p>The virus is spread in Europe, Asia, North America. It is transmitted by airborne droplets with damage to the respiratory tract, up to the destruction of the pulmonary alveoli.</p> <p>Application: daily for 2 weeks.</p>
48	Stop Penicillium	<p>Genus of molds affecting the organs of the urinary and respiratory systems, lymph nodes, skin. They cause severe intoxication, and also are allergens.</p> <p>Application: daily for 2 weeks.</p>
49	Without Rickettsia	<p>Intracellular parasite. It is able to affect any human organs, cause significant disorders of the central nervous system and circulatory disorders. Routes of transmission: through a tick bite, food, contact. Distributed in developing countries.</p> <p>Application: daily for 2 weeks.</p>
50	Without Papilloma - General	<p>HPV affects the skin and mucous membranes with the formation of lesions. Some can cause malignant tumors, in the risk zone of women. Ways of transmission of this infection: contact with objects of everyday life, through sexual intercourse, during childbirth from the mother to the child.</p> <p>Application: daily for 2 weeks.</p>

51	Without Kidney Papilloma	<p>With the defeat of HPV of the mucous surface of the urinary system, there are lesions left in the renal pelvis and bladder. With prolonged exposure to adverse factors, these lesions can not only reduce the functionality of organs, but also are capable of degeneration.</p> <p>Application: daily for 2 weeks.</p>
52	Without Trichomonas	<p>Trichomonas is one of the simplest pathogens of many sexual diseases. Infection occurs with any type of sexual contact, as well as through contact with everyday life objects: the rim of the toilet bowl, the pool, the use of common towels, washcloths, hygiene products, and fitting other people's clothes (underwear). Once in the bloodstream, they can disguise themselves as blood cells. The biggest threat, most often, comes from the infectious agents that it carries: chlamydia, candida, gonococcus, cytomegalovirus and herpes viruses.</p> <p>Application: daily for 2 weeks.</p>
53	Without Leptospira	<p>A bacterium that causes damage to capillaries, liver, kidneys, and muscles. Distributed in all regions. Infection occurs from domestic and wild animals, through damaged mucous membranes and skin, from natural water sources.</p> <p>Application: daily for 2 weeks.</p>
54	Without Cryptococcus	<p>Yeast fungi of the genus Cryptococcus, affect the central nervous system, lungs, skin, mucous membranes. The causative agent is present in soil contaminated with bird feces. The way of transmission is through airborne droplets.</p> <p>Application: daily for 2 weeks.</p>
55	Without Toxoplasma	<p>The prevalence of Toxoplasma infection in the world is very high, up to 90%. Being in the body often does not cause problems for its carrier. Infection occurs either in the uterus or is acquired. Toxoplasma affects the nervous system, eyes, heart, muscles, lungs, intestines, skin.</p> <p>Application: daily for 2 weeks.</p>

56	Without Ureaplasma	<p>Ureaplasma is a pathogenic form that causes diseases of the genitourinary system, joints, pathology of pregnancy and the fetus. The transmission of an infectious agent occurs through sexual contact, in the uterus and during childbirth.</p> <p>Application: daily for 2 weeks.</p>
57	Without Echinococcus	<p>Serious problems are caused by the larvae of this microorganism, which form cysts in the body. These cysts compress the surrounding tissue, which leads to their atrophy and their death. Larvae affect the liver, lungs, kidneys, bones, and brain. Infection occurs through contact with infected animals, when collecting berries and herbs, when drinking water from infected sources. Also, at risk are slaughterhouse workers, shepherds, tanners.</p> <p>Application: daily for 2 weeks.</p>
58	Without Pseudomonas aeruginosa	<p>Pseudomonas aeruginosa is a bacterium characterized by natural resistance to most antimicrobial agents. It affects the organs of the gastrointestinal tract, respiratory system, central nervous system, other organs and systems. Infection sources are is people and animals, patients and carriers. Transmission ways: contact with everyday life objects, airborne droplets, food.</p> <p>Application: daily for 2 weeks.</p>
59	Against Lyme Disease 1	<p>Tick-borne borreliosis (Lyme disease) is the most common problem that occurs when a person gets bitten and infected by an ixodid tick. The central nervous system, heart, joints are affected.</p> <p>Application: the program is used together with the program "Against Lyme Disease 2", after bites every day for 2 weeks. For problems arising from bites in the past, see the "Lyme Disease" complex.</p>
60	Against Lyme Disease 2	<p>Tick-borne encephalitis virus is transmitted by bites of ixodid ticks, less often through the use of raw milk from cows and goats infected with the virus. Distribution: Siberia, the Far East, the Urals. The main organ affected is the central nervous system.</p>

60	Against Lyme Disease 2	Application: the program is used together with the program "Against Lyme Disease 1", after bites every day for 2 weeks. For problems arising from bites in the past, see the "Lyme Disease" complex.
61	Healthy Cell – 1	Various pathogenic factors contribute to the accumulation of toxins in the body that can cause cell degeneration. The programs "Healthy Cell - 1" and "Healthy Cell - 2" reduce the risk of oncological pathology, contribute to the correction of pre-tumor changes, reduce inflammatory processes and enhance immune defense.
62	Healthy Cell – 2	Application: programs are used together, see the "Healthy Cell" complex.
63	Healthy Gums	Gum disease (gingivitis) is caused by viruses, bacteria, and fungi. At risk may be people wearing dentures and braces. The program helps to reduce the pathogenic load, reduce the inflammatory process, and improve trophic tissue. Application: daily for 1-2 months.
64	Mucous Membrane Regeneration	The appearance of ulcers (aphthae) on the oral mucosa indicates the presence of an inflammatory process that can be caused by viral or bacterial agents, trauma or a lack of trace elements. The program removes the inflammatory process, helps restore the oral mucosa, and strengthens local immunity. Application: It is advised to use the program in conjunction with the "Healthy Mouth" program.
65	Healthy Mouth	Inflammation of the oral mucosa (stomatitis) occurs due to a number of factors: the presence of infectious agents, damage to the oral cavity, during dental interventions, and an unbalanced diet. It is localized on the tongue, the inner surface of the lips, cheeks, and palate. The program removes the inflammatory process, helps restore the oral mucosa, and strengthens local immunity. Application: daily for 2 weeks. It is advised to use the program in conjunction with the "Mucous Membrane Regeneration" program. Use in any dental procedures accompanied by mucosal damage.

66	Without Fistula	<p>Suppuration of the gums is very often accompanied by the formation of a fistula. This can be fraught with serious consequences from tooth loss to deep tissue inflammation. The program helps prevent suppuration, reduces the inflammatory process.</p> <p>Application: daily for 2-4 weeks. Use after dental treatment or tooth extraction.</p>
67	Stop Injury (teeth)	<p>The program reduces pain, speeds up the healing process, and relieves from swelling.</p> <p>Application: daily for 1-2 weeks. Use immediately after dental procedures for the treatment, removal, implantation of teeth.</p>
68	CNS Without Problems	<p>The program helps to improve the functioning of the nervous system after exposure to various factors (infectious, traumatic, etc.). It helps to restore nerve connections between the central nervous system and peripheral, relieves swelling and pain.</p> <p>Application: for 1-6 months daily. Preferably together with the program "Healthy Nerves" (see the "Lyme Disease" complex).</p>
69	Healthy Nerves	<p>In case of violation of the integrity of the nerve fiber, functional disorders of the nervous system can occur. The program prevents the destruction of the myelin sheath of nerve fibers, thereby preserving the conductivity of the nerve fiber.</p> <p>Application: for 1-6 months daily. Preferably together with the program "CNS Without Problems" (see the complex "Lyme Disease").</p>
70	Clean Sinuses	<p>Inflammation of the mucous membrane of one or more sinuses – sinusitis. It can occur as a complication of infectious diseases of the nose and respiratory tract, as well as after facial trauma. The program helps to reduce the inflammatory process in the sinus area, better discharge of mucus, and reduce pain during acute processes.</p> <p>Application: daily for 2 weeks.</p>

71	Clean Sinuses - General	<p>The greatest problem for many people is chronic sinusitis, which occurs without obvious manifestations, but for a sufficiently long time. The causes may be infections of the upper respiratory tract, the presence of polyps, curvature of the nasal septum, and problems with teeth. The program helps to reduce the inflammatory process in the sinus area, reduce swelling, and prevent exacerbations.</p> <p>Application: daily for a month if there is a problem. And in order to prevent exacerbation during the cold season.</p>
72	Ears Without Inflammation	<p>The causes of ear inflammation can be: a pathological process in the area of the nasopharynx, curvature of the nasal septum, ear injury. The program helps to reduce swelling, reduce inflammation and pain.</p> <p>Application: daily for 2 weeks. Alternate with the DeVita Ritm program "Healthy Ears".</p>
73	Throat Without Pain	<p>Tonsil inflammation of the pharyngeal ring is often observed after suffering tonsillitis or other infectious diseases of the pharynx. May occur in acute or chronic form. Transmission externally – by airborne droplets, or internally – from internal foci of chronic infection. The program helps reduce tonsil inflammation, swelling, pain, and toxic stress.</p> <p>Application: daily for 2 weeks. Alternate with the DeVita Ritm program "Throat Without Problems".</p>
74	Against Cold - General	<p>Inflammation of the mucous membranes of the nasopharynx (nasopharyngitis) has an infectious nature, viral or bacterial. The highest frequency is observed in the offseason. The program reduces inflammation, swelling, prevents the development of exacerbations.</p> <p>Application: daily for 2 weeks.</p>
75	Antiinflammation - General	<p>Inflammation is a body reaction that occurs in response to damage or the action of a pathogenic agent. The program helps the body in the elimination of the source of inflammation, wherever it is located, in the reduction of the influence of pathogenic factors, and also in the restoration of homeostasis.</p>

75	Antiinflammation - General	Application: daily for 1-4 weeks. It is advisable to combine with any other program in order to reduce the inflammatory process.
76	Stop Migraine	Migraine headaches are one of the most common types of headaches. They are characterized by acute throbbing pain localized in a certain part of the head. The program relieves spasms of blood vessels, reduces pain, helps normalize blood circulation in the head. Application: as needed.
77	Antiseptic	Damage to the skin: scratches, cuts, burns, etc. are open gates for infectious agents. As a result, the wounds may not heal for a long time, become inflamed, or hurt. The program helps to disinfect the wound, reduce inflammation and quickly tighten it. Application: daily for 1-4 weeks. It is advisable to combine with any other program in order to reduce the inflammatory process.
78	Healthy Bile	Improper and irregular nutrition (prolonged fasting, alcohol, spices, overly spicy fatty and overcooked meals, snacks, refusal to consume vegetable oil), stress, a small amount of fluids intake, infectious liver lesions are the causes of problems in the work of the bile. The program facilitates the outflow of bile, helps restore the work of the gallbladder, reduces pain. Application: daily for 1-6 months, preferably in the evening. Otherwise, during the day.
79	Without cough	Cough is a protective reflex reaction of the body that occurs due to irritation of the respiratory tract mucous membrane. It can be a sign of inflammation of the respiratory system, which can be caused by pathogenic viruses, bacteria, fungi and other agents, as well as allergens. The program alleviates the condition in the presence of acute or chronic cough, reduces inflammation of the mucous membrane of the respiratory tract. Application: daily for 2-4 weeks.
80	Without bacterial pneumonia	According to scientists, the first place among the causes of lower respiratory tract inflammation is occupied by microbial infections.

80	Without bacterial pneumonia	<p>Most bacteria that affect the respiratory system are part of the natural micro flora of the organism, but under adverse conditions they become pathogenic. The program fights against such microorganisms as: Streptococcus pneumoniae, Chlamydomphila pneumoniae, Mycoplasma pneumoniae, Klebsiella pneumoniae, etc.</p> <p>Application: daily for 2 weeks.</p>
81	No Coronavirus - New	<p>A new improved and expanded program that allows you to fight with all types of coronavirus, including new mutated forms.</p> <p>Application: daily for 2 weeks. In order to prevent the disease 2-3 times a week.</p>
82	Without pneumonia	<p>Inflammation of the lung tissue can be caused by pathogenic flora of various forms: viral, bacterial, fungal, etc. It arises not only as an independent form, but also as a result of the common cold, decreased immunity, and lack of vitamins. The program relieves from swelling and inflammation of the lower parts of the respiratory system, improves the functionality and energy of these organs, increases local immunity.</p> <p>Application: daily for 2-4 weeks. It is advised to combine with the program "Without cough".</p>

Appendix 3 – „Explanations for the use of programs DeVita Ritm“.

DeVita Ritm (manual programs)				
Name of the program	In which cases the program can be used	Effect	First results	Lasting effect
Active protection	With physical and psychological stress, decreased performance, attentiveness and tone, with chronic fatigue and irritability and daily work with household and computer equipment. To remove the bioenergetic load when working with people.	Immunostabilizing Gives energy Anti-stress	Within an hour	1 month
Blood circulation regulation	Violation of blood microcirculation (blood supply to organs), lack of oxygen in the blood, headaches, impaired blood pressure and/or vascular wall tone.	Relieves from spasms Supports tone Expands blood vessels Normalizes blood pressure	Within an hour	1 month
Digestion	Overeating, heaviness in the stomach, heartburn, bloating.	Relieves from spasms Anti-inflammatory Normalizes the acid balance	Within an hour	1 month
Detoxification	High physical activity, malnutrition, food poisoning, pain in the right hypochondrium, alcohol consumption.	Antitoxic Protects the liver Improves the outflow of bile Relieves from spasms	Within an hour	1 month

Anti-stress	Stress, high physical and psychological stress (study, work, sport)	Anti-stress Calming effect	Within an hour	1 month
7 chakras	Chronic fatigue, headaches, decreased immunity, high physical and psychological stress.	Gives tonus Harmonizing effect Anesthetic	Within an hour	1 month
Hormones normalization	In case of puberty disorders in adolescents from 12 years old, after surgical interventions, with hormonal failures, with reproductive system dysfunction in men and women.	Normalizes the hormonal background	Within 1 month	6 months
Clean kidneys	Inflammatory processes in the kidneys, bladder, swelling.	Improves urine output Decongestant Anti-inflammatory	Within 1 day	1-2 months
Clean lymph	Impaired lymphatic system, swelling, intoxication, impaired cellular metabolism, impaired blood pressure, decreased immunity, skin diseases.	Lymphatic drainage effect Decongestant Antitoxic Immunostabilizing	Within 1 day	1 month
Healthy eyesight	Decreased muscle tone of the eyes, visual impairment, visual fatigue. For prevention of visual impairment during prolonged work with computer equipment or texts on paper.	Correction effect Gives tonus Strengthening	Within 1 day	1-3 months

Female sexuality	Decreased libido, increased emotional excitability, a tendency to nervous excitement.	Antidepressant Activating	2-3 days	1 - 2 months
Male sexuality	Increased stress, excitability of the nervous system, decreased potency, fear of "failure".	Antidepressant Activating	2-3 days	1 -2 months
Recovery from injuries	Any injuries of bones, cartilage and soft tissues, ligamentous apparatus: fractures, bruises, dislocations, cuts. After surgery.	Anesthetic Decongestant Anti-inflammatory Regenerating	Within an hour	1 month
Warm -up	Used before physical activity.	Gives tonus Gives energy	Within an hour	1 month
Workout	Used during exercise.	Gives tonus Gives energy Regulatory	Within an hour	1 month
Healthy heart	Disorder of the functional activity of the heart, impaired heart rate, impaired blood pressure, high stress loads.	Relieves from spasms Normalizes blood pressure Gives tonus Anesthetic	Within an hour	1-2 months
Cardiac rhythm normalization	Heart rhythm disturbances: tachycardia, arrhythmia, including respiratory and atrial fibrillation.	Relieves from spasms Normalizes the cardiac rhythm	Within an hour	1-2 months
Anti-cold	Diseases of the upper respiratory tract. Allergy, accompanied by swelling of the nasopharynx, lacrimation.	Anti-inflammatory Decongestant Immunostabilizing	Within an hour	Within 1 month

Free breath	Diseases of the lower respiratory system. Allergy. Spasms of the bronchopulmonary system of various origins.	Anti-inflammatory Relieves from spasms Expands blood vessels	Within an hour	1 month
Women's health	Dysfunction and inflammatory processes of the reproductive system.	Anti-inflammatory Expands blood vessels Hormone-normalizing Anti-aging	2-3 days	6-12 months
Men's health	Reproductive system dysfunctions.	Anti-inflammatory Expands blood vessels Hormone-normalizing Anti-aging	2-3 days	6-12 months
Healthy sleep	Insomnia, sleep phase disturbance, increased nervous irritability.	Antidepressant Calming Normalizes sleep	Within 1 day	1 month
Good mood	Depression, irritability, psycho-emotional stress, fatigue.	Antidepressant Regulating mood	Within 1 day	1 month
Joints without pain	Inflammation and pain of the musculoskeletal system (joints, muscles, spine), high physical exertion, including sports.	Anesthetic Regulatory	Within 1 day	1 month

Joints without inflammation	Inflammation of the musculoskeletal system, swelling, trauma, with high physical exertion, including sports.	Anti-inflammatory Decongestant Regulatory	Within 1 day	1 month
Intestine without problems	Pain, nausea, bloating, dysbiosis, decreased tone of the intestines, gall bladder, violation of the gastric mucosa and duodenum, liver function.	Relieves from spasms Anesthetic Improves the outflow of bile Anti-inflammatory Normalizes metabolism Decongestant	Within 1 day	6-12 months
Digestion normalization	Thyroid, pancreas and gastrointestinal dysfunction, swelling, impaired absorption of K, Ca, Mg, Na, impaired acid-base balance.	Regulatory Harmonizing	5-7 days	6-12 months
Beautiful skin	Decreased barrier function of the skin and cellular metabolism. Acne, dryness or excessive oily skin, relieves from psoriasis and vitiligo.	Regulates the immune and barrier functions of the skin Normalizes cell nutrition	5-7 days	1 month
Beautiful hair and nails	Hair loss and fragility, brittle nails. Dry and oily seborrhea.	Regulating the function of the skin glands Normalizes cell nutrition	5-7 days	1 month

Without allergens	Various types of allergies (respiratory – odors, dust, pets, hay fever, skin, food), swelling of the upper respiratory tract.	Antitoxic Antiallergic Decongestant Anti-inflammatory Immunostabilizing	Within 1 day	1-2 months
Immune protection	Decrease in immune defense, increased physical and mental stress.	Immunostabilizing Anti-inflammatory	Within 1 month	1 month
Healthy kidneys	Violation of metabolic processes associated with the withdrawal of certain acids and salts, impaired functional activity of the kidneys (formation of kidney stones, deposition of salts in the joints, high blood pressure).	Improves urine output Decongestant	Within 1 day	1-2 months
Cellular respiration	Headaches, problems with the vessels of the head, lethargy, drowsiness, lack of oxygen in the blood, a sedentary lifestyle. For residents of large cities.	Relieves from spasms Expands blood vessels Normalizing Fills with oxygen	Within 1 day	1-2 months
Vegetative regulation	When doing hard work for prolonged periods of time, psychological stress, imbalance of the ANS.	Regulatory	Within 1 day	1-2 months
Healthy venous system	Decreased tone of veins, stagnation in the veins of the lower extremities.	Anti-inflammatory Anesthetic	Within an hour	1-2 months

Without headache	Spasms of cerebral vessels, intense mental work, instability of blood pressure, impaired blood microcirculation in the head.	Anesthetic Relieves from spasms	Within an hour	1-2 months
Normal blood sugar	Pancreatic dysfunction associated with an increase in blood sugar.	Regulatory Normalizing	Within 1 day	6-12 months
Healthy joints	Inflammatory changes in the shell of joints and periarticular tissues, hypothermia. Physical overload of joints of a professional, domestic or sports nature. Joint injuries.	Anti-inflammatory Anesthetic	Within an hour	3-6 months
Stop prostatitis	Dysfunction of the prostate gland, decreased functional activity of the testicles, impaired urination. With irregular sexual relations.	Anti-inflammatory Regulatory	2-3 days	6-12 months
Recovery after training	Post-training period. To relieve general discomfort, headaches, lethargy, drowsiness, irritability, reduce the concentration of lactic acid, normalize respiratory processes.	Regulatory Restores energy Relieves from spasms Antitoxic	Within an hour	1 month
Functional memory +	Decrease in the speed of memorization, concentration of attention, the duration of information storage.	Stimulating	5-7 days	1 month

Balanced nervous system	Stress, irritability, emotional instability, high physical and psychological stress (study, work, sport)	Anti-stress Calming	Within an hour	1 month
Nervous System - General	Functional problems of the nervous system, a violation of the integrity of the tissue and the connection between the departments of the central nervous system, leading to a violation of psychological stability.	Anti-inflammatory Regenerating Regulatory Anti-stress	Within 1 month	3-4 months
Healthy Ears	Pain and discomfort in the ear area arising from contact with infectious agents, water, pressure drop. Also in case of hearing loss.	Regulatory Relieves from spasms Anti-inflammatory Anesthetic	Within 1 day	1 month
Throat Without Problems	Pain and swelling in the throat, nasopharynx, feeling of stuffiness, hoarseness or loss of voice arising from the inflammatory process.	Anti-inflammatory Anesthetic Decongestant	1-2 days	Within 1 month
Strong Teeth	Bleeding, friability of the gums, violation of the integrity of the mucous membranes (microtrauma, dental procedures).	Anti-inflammatory Regenerating Normalizes microcirculation	5-7 days	Within 1 month
Healthy Pancreas	Violation of the external-secretory (digestive) or within the secretory (endocrine) functions of the gland.	Normalizing Regulating Anti-inflammatory	1 month	6 - 12 months

Healthy Thyroid	Violation of metabolic processes associated with the functional imbalance of the gland.	Normalizing Regulating Anti-inflammatory	1 month	6 - 12 months
-----------------	---	--	---------	---------------

DeVita Ritm (automatic programs)

Name of the program	In which cases the program can be used	Effect	First results	Lasting effect
Healthy Day - automatic	Improves blood supply to organs and tissues, activates the work of excretory systems, improves metabolism, the correct distribution of energy balance, relieves nervous tension, strengthens the protective functions of the body.	Immunostabilizing Gives energy Anti-stress Antitoxic Normalizes the hormonal background	5-7 days	1 month
Health - automatic	Corrects the state of the immune system for colds and viral diseases, improves cellular metabolism, which contributes to faster cleansing of toxins. It also restores the work of systems and organs that are affected during the illness.	Anti-inflammatory Immunostabilizing Relieves from spasms Decongestant	5-7 days	1 month
Complete cleansing - automatic	Activates the work of excretory systems, removes toxins, increases adaptive reserves and the defense mechanism of the organism. The daily biological activity of organs was taken into account.	Gives energy Antitoxic Decongestant Normalizes the hormonal background	5-7 days	1 month

High tonus - automatic	Relieves the toxic load from the liver, kidneys and lymphatic system, activates their work, improves blood circulation. Starts natural rejuvenation processes.	Anti-inflammatory Improves urine output Decongestant Immunostabilizing	Within 1 month	6-12 months
Healthy metabolism - automatic	Harmonizes the work of the organism, regulates the activity of the autonomic nervous system, stabilizes the appetite, activates the digestive and excretory organs. It contributes to the normalization of metabolic processes and psycho-emotional state, weight loss and improves the quality of life.	Anti-inflammatory Normalizes metabolism Decongestant Regulates appetite	Within 1 month	6-12 months
No poisoning - automatic	Reduces the harmful effects of toxins on the organism (food, drug, alcohol). Neutralize and removes them from the intestines and liver, reducing the burden on these organs.	Antitoxic Protects the liver Improves the outflow of bile Relieves from spasms	Within 1 day	5-7 days
Normal blood pressure - automatic	Relieves from spasm of blood vessels, normalizes blood pressure. Restores the work of heart and kidneys, normalizes cellular metabolism, reduces hypoxia and removes toxins. Improves blood supply to organs, reduces swelling.	Normalizes blood pressure Relieves from spasms Improves urine output	Within 1 day	1 month

Healthy sleep - automatic	Relieves from psychological stress, relaxes the central nervous system, improves the quality and duration of sleep.	Anti-stress Calming	Within 1-2 hours	1 month
Healthy joints - automatic	Relieves from inflammation and pain in the joints and spine. Improves their blood supply and nutrition. Restores damaged joint tissues, including articular cartilage and synovial membrane, as well as surrounding tissues: ligaments, tendons and muscles. Effective for any problems with joints: arthritis, arthrosis, stiffness	Anti-inflammatory Anesthetic Decongestant Regulatory Supports the function of joints	Within 1 day	3-6 months
Joints without pain - automatic	Relaxes tense muscles, improves the condition of the ligamentous apparatus, activates blood supply, and reduces pain and inflammation in the joints and spine. Effective with active load on the musculoskeletal system, injuries.	Anti-inflammatory Decongestant Anesthetic	Within 2-3 hours	1 month
Healthy skin and hair - automatic	Improves blood circulation to the skin, corrects the functioning of the sebaceous and sweat glands, which enhances skin immunity and reduces the manifestation of bacterial and fungal infections.	Regulates the immune and barrier functions of the skin, the function of the glands Normalizes cell nutrition	5-7 days	1 month

Healthy skin and hair – automatic	It also improves blood circulation in the capillaries of the hair follicles and the bed of nail plates, contributing to enhanced nutrition of hair and nails.	Regulates the immune and barrier functions of the skin, the function of the glands Normalizes cell nutrition	5-7 days	1 month
Anti cold - automatic	This program is used during colds and allergic reactions (hay fever). Relieves from inflammation and reduces the respiratory manifestation of colds and allergies: swelling, nasal congestion, cough.	Anti-inflammatory Decongestant Immunostabilizing Relieves from spasms	1-2 hours	1 month
Men's Health - automatic	Contributes to the normalization of the prostate gland, the overall improvement of the genitourinary system in men, increases activity and sexual stamina. It also prevents problems associated with the impaired function of the organs of the genitourinary system.	Anti-inflammatory Expands blood vessels Hormone-normalizing Anti-aging	2-3 days	6-12 months
Without gout - automatic	Normalizes the metabolism in the organism, regulates the balance of K, Ca, Na, P. Relieves from inflammation in the joints, reduces swelling, and removes salts and toxins. Improves the functional state of the kidneys.	Anti-inflammatory Anesthetic Decongestant Improves urine output Regulates salt metabolism	1-2 days	3-6 months

Appendix 4 – „Explanations for the use of programs DeVita AP“.

DeVita AP (manual programs)				
Name of the program	In which cases the program can be used	Effect	First results	Lasting effect
No staphylococcus	<p>Purulent wound infections, infection, purulent inflammatory diseases of various organs (upper respiratory tract, throat, skin, musculoskeletal system, external genital organs, urinary system, meninges, foodborne toxicosis).</p> <p>Prevention of fetal infection during pregnancy.</p>	<p>Antibacterial</p> <p>Anti-inflammatory</p>	2-3 hours	10-14 days
No streptococcus	<p>Diseases of the ear, throat, nose, inflammatory processes of the musculoskeletal system, heart, kidneys, skin.</p> <p>Prevention of fetal infection during pregnancy.</p>	<p>Antibacterial</p> <p>Anti-inflammatory</p>	2-3 hours	10-14 days
No chlamydia	<p>Infections of the genitourinary system, joints, eyes, upper and lower respiratory tracts, as well as the cardiovascular system. Prevention of occupational diseases among people working with birds. As well as prevention of infection through water during bathing and transmission of the infection to the fetus during pregnancy.</p>	<p>Antibacterial</p> <p>Anti-inflammatory</p>	1-2 days	10-14 days

No helicobacter	Inflammation of the stomach, duodenum, damage to the mucous membranes of these organs.	Antibacterial Anti-inflam- matory	5-7 days	3-5 weeks
No bacteria	Problems caused by Klebsiella: inflammation of the respiratory system, urinary tract, meninges, eyes, intestinal infections, blood poisoning. Problems caused by listeria: inflammation of the digestive tract, meninges, joints, respiratory organs. In order to prevent occupational diseases of people involved in animal husbandry, poultry farming, primary processing of meat and skins. Problems caused by pneumococcus: inflammation of the respiratory tract, ears, joints, meninges, blood poisoning.	Antibacterial Anti-inflam- matory	Within 1 day	14-21 days
No hepatitis A	Prevention of the virus infection when visiting countries of Asia and Africa, reduces the risk of complications.	Antiviral Anti-inflam- matory	1-2 weeks	6 months
Without toxins	Mandatory program for any toxic load (viral, bacterial, protozoal, mycotic, parasitic).	Antitoxic Energy saving	1-2 hours	1 month
No herpes zoster	Shingles - skin rashes, accompanied by severe pain along the sensory nerve.	Antiviral Anti-inflam- matory Anesthetic	Within 1 day	1 month

No herpes simplex	Genital herpes and herpes (cold sore) on the lips.	Antiviral Anti-inflammatory	Within 1 day	1 month
No herpes	As an addition to any of the antiherpetic programs to reduce the time of recovery and reduce inflammatory and pain manifestations.	Antiviral Anti-inflammatory Antipruritic	Within 1 day	1 month
Healthy lymph	Disorders in the lymphatic system manifested by the following symptoms: swollen fingers and a tendency to swelling, chronic fatigue, constipation, discolored skin on the legs, chest pain and swelling, dry irritated skin, inability to concentrate, cold hands and feet, cellulite.	Anti-inflammatory Decongestant Antitoxic	Within 1 day	1 month
Anti-Cold	Diseases of the nose, throat, bronchi. In conjunction with the programs: "No Staphylococcus", "No Streptococcus", "No Bacteria".	Antiviral Anti-inflammatory Decongestant	2-3 hours	5-7 days

No mould & fungi	Lesions of the skin, subcutaneous fat, mucous membranes, visual and hearing apparatus, bones, joints, as well as internal organs (bronchopulmonary system, liver, spleen, heart, blood vessels, gastrointestinal tract, kidneys, central nervous system), allergic reactions in the form of cough, nasal congestion, skin rashes. Effective in prevention of fungal infections after visiting the sauna, pool, beach, with prolonged exposure to damp rooms.	Antifungal Anti-inflammatory	1-2 days	2 months
No candida	Diseases of the mucous membranes of the internal organs, skin, accompanied by rashes, dysbiosis, burning sensation in the genitals.	Antifungal Anti-inflammatory	2-3 days	1 month
No fungi	Damage to the skin, hair, nails, mucous membranes of the internal organs by fungi of the genus: trichophyton, microsporum, mucor. Effective in prevention of fungal infections after visiting the sauna, pool, beach, getting in contact with an infected person.	Antifungal Anti-inflammatory Antipruritic	2-3 days	3-6 months

No protozoans	Inflammatory processes of the digestive tract caused by a number of protozoa: giardia, amoeba, etc. Prevention of infection through water when swimming.	Anti-protozoan Anti-inflammatory	2-3 days	1 month
Intimate health	Diseases of the mucous membrane of the respiratory tract, genitourinary tract caused by pathogens such as: ureaplasma, mycoplasma, toxoplasma. Prevention of transmission of infection to the fetus, sexual partner.	Antibacterial Anti-protozoan Anti-inflammatory	2-3 days	1 month
No schistosomes (blood-flukes) & trematods	Damage to the liver, pancreas, lungs, circulatory and genitourinary systems, toxic-allergic reactions caused by a number of flukes: feline, hepatic, pulmonary, lanceolate, as well as schistosomes.	Antiparasitic	1-5 days	1 - 2 months
No nematodes and ascarides	Infection with roundworms, such as ascarides, pinworms, etc. Causing weight loss, peeling of the skin, rash, hair loss, bowel obstruction, inflammation of the respiratory tract, liver and pancreas. The program fights parasites at different stages of their life cycle.	Antiparasitic	2-3 days	1 - 2 months

No parasites, General	Suppression of the vital activity of various types of parasites. Used in combination with other helminth extermination programs.	Antiparasitic	2-3 days	1 - 2 months
No parasites, Digestive tract	Parasites of the liver and pancreas, duodenum ulcer. Used in combination with other helminth extermination programs.	Antiparasitic	2-3 days	1 - 2 months
Anti-Flu	The program aims to destroy various strains of influenza viruses (A, B, C).	Antiviral	2-3 hours	5-10 days
Against flu - General	Mutated forms of flu, fever, pain.	Antiviral Antipyretic Anesthetic Anti-inflammatory	Antiviral Antipyretic Anesthetic Anti-inflammatory	5-10 days
Healthy gastrointestinal	Normalizes the condition and stops dehydration in case of dysbacteriosis caused by rotavirus infection, E. coli.	Antibacterial Antiviral Anti-inflammatory Protects cells Normalizes metabolism	2-3 hours	5-7 days
Help against poisoning	Normalizes the condition with Enterovirus infection and Salmonella infection.	Antibacterial Antiviral Anti-inflammatory Protects cells Normalizes metabolism Antitoxic	2-3 hours	10 days

Antivirus	Reduces the total viral load, cytomegalovirus infection, proceeding in the form of a persistent cold with headaches and joint pain, inflammation of the salivary glands.	Antiviral Anti-inflammatory	2-3 hours	1 month
Drainage, General	Infections of the upper respiratory tract, lymphoid tissue, liver, spleen caused by the Epstein-Barr virus.	Antiseptic Antitoxic Lymphatic drainage	Within 1 day	1 month
Drainage Antitox	With chemical toxic loads of the tissue sector with salts of heavy metals, radionuclides, food toxins.	Antitoxic Lymphatic drainage	1-2 days	14-21 days
Mexican detoxification	After surgical interventions, with chronic and drug intoxication.	Lymphatic drainage Decongestant Antitoxic Stabilizing Regulates excretory functions	6-7 days	1 month
No allergies	Various types of allergies (respiratory – odors, dust, pets, hay fever, skin, food), stabilizes the immune system.	Antitoxic Antiallergic Decongestant Anti-inflammatory Immunostabilizing	1-2 days	4-6 months
Weight Control	Presence of excess weight, impaired appetite, destroys one of the causes of obesity - Ad-36 adenovirus.	Antiviral Antitoxic	2-4 weeks	4-6 months

Against Lyme Disease 1	Tick bites. Those programs are used in pairs. If the bite happened earlier, you must take the full application scheme of the complex "Lyme Disease".	Antibacterial Antiviral	1-2 days	14 – 28 days
Against Lyme Disease 2				
Against Cold - General	Diseases of the nose, throat, bronchi. Use together with the programs: "No staphylococcus", "No streptococcus", "No bacteria".	Decongestant Anti-inflammatory Anesthetic	1-2 days	1 month
Anti-inflammation - General	Anti-inflammation - General	Decongestant Anti-inflammatory Anesthetic	1-2 days	1 – 2 months
Antiseptic	After surgical interventions, with any damage to the integrity of the skin and mucous membranes, with inflammatory processes.	Antiseptic Decongestant Anti-inflammatory Anesthetic Accelerates regeneration	2-3 hours	7 – 21 days
Anti-virus Gastrointestinal	Prevention of Coxsackie virus disease when visiting countries of Asia and Africa, reducing the risk of complications. The following symptoms can indicate the presence of the virus: dehydration, sore throat, the presence of a vesicle rash on the skin.	Antiviral Protects cells Normalizes metabolism	1-2 days	14 – 21 days

Clean Sinuses	Acute inflammation of the nasal mucosa and sinuses (sinusitis, sinusitis, etc.)	Decongestant Anti-inflammatory Anesthetic	1-2 days	14 - 21 days
Clean Sinuses - General	Together with antiviral and antibacterial programs.	Decongestant Anti-inflammatory Anesthetic Stabilizing	1-2 days	14 days
CNS Without Problems	For chronic problems with the nasal mucosa and sinuses. As one of the means of preventing an acute process in the upper respiratory tract for colds.	Decongestant Anesthetic Protects cells Revitalizing	2-3 days	6-12 months
Ears Without Inflammation	Pain and discomfort in the ear area arising from contact with infectious agents, water, pressure drop.	Decongestant Anti-inflammatory Anesthetic	1-2 days	14 - 21days
Healthy Bile	Violation of the timely and uniform separation of bile into the intestine, which may be a consequence of irregular nutrition, consumption of harmful products, excessive consumption of fats, medicines, and the presence of parasites.	Anti-inflammatory Anesthetic Cholagogic	2-3 hours	1-4 months

Healthy Cell - 1	Prevents the development of cell mutations, reduces the negative effects of the environment and toxic load. Particular attention should be paid to those who live in adverse ecological areas, experience great emotional stress and the influence of negative production factors. Programs should be used in the "Healthy Cell" complex.	Antiviral Anti-inflammatory Protects cells	3-4 days	6-12 months
Healthy Cell - 2				
Healthy Gums	Presence of dentures, braces, crowns, as well as infections of the oral cavity that cause gum disease.	Anti-inflammatory Anesthetic Antitoxic Improves nutrition	2-3 hours	1 month
Healthy Mouth	Inflammation of the oral mucosa (sores, mucosal damage) that occurs when there are infectious agents, damage to the oral cavity, during dental interventions, an unbalanced diet.	Antiviral Anti-inflammatory Anesthetic Accelerates regeneration	1-2 days	1 month
Stop Injury (teeth)	The best effect will be acquired if used in combination with the program "Mucous Membrane Regeneration".	Anesthetic Decongestant Accelerates regeneration	2-3 hours	7-14 days

Mucous Membrane Regeneration	Inflammation of the oral mucosa (sores, mucosal damage) that occurs when there are infectious agents, damage to the oral cavity, during dental interventions, an unbalanced diet.	Anti-inflammatory Accelerates regeneration Immunostabilizing	1-2 days	1 month
Without Fistula	The best effect will be acquired if used in combination with the program "Healthy Mouth".	Anti-inflammatory Decongestant Antitoxic	1-2 days	7-14 days
Stop Adenovirus - General	After dental interventions (removal, treatment), in the presence of swelling of the gums, soreness.	Antiviral Anti-inflammatory	1-2 days	14-21 days
Healthy Nerves	Inflammation of the mucous membranes of the nose, throat, eyes, intestines.	Anti-inflammatory Protects cells	2-3 days	6-12 months
Stop Amoeba	Normalizes the condition with dysentery, gastroenteritis, intestinal ulcers, caused by the presence of protozoa. It is recommended to use to prevent infection when visiting tropical and subtropical countries of Asia, Africa, South America.	Anti-protozoan Anti-inflammatory Normalizes metabolism	2-3 days	1 month
Stop Coronavirus	Inflammation of the mucous membranes of the nose, throat, lungs.	Antiviral Anti-inflammatory	1-2 days	14-21 days

Without Klebsiella	Inflammation of the respiratory system, urinary tract, meninges, eyes, intestinal infections, blood poisoning. It is recommended as an addition for viral load, malnutrition, also for people with reduced immunity, people suffering from alcoholism, diabetes, chronic lung diseases, liver diseases.	Antibacterial Anti-inflammatory Antitoxic	1-2 days	14-28 days
Stop Migraine	Headaches of various origins.	Anesthetic Antispasmodic Normalizes blood circulation	Within 1 day	1 month
Stop Penicillium	Reduces toxic infections when using products affected by the fungus, in case of chronic diseases of the respiratory tract, kidneys, allergic reaction to penicillium.	Antifungal Anti-inflammatory	2-3 days	1 month
Throat Without Pain	Pain and swelling in the throat, nasopharynx, feeling of stuffiness, hoarseness or loss of voice arising from the inflammatory process.	Anti-inflammatory Decongestant Anesthetic Antitoxic	Within 1 day	14-21 days
Without Campylobacter	As an additional method to prevent infection and the development of diarrhea, for people working in livestock and poultry farms, as well as tourists visiting developing countries, people who use contaminated meat products, milk, water.	Antibacterial Anti-inflammatory	1-2 days	14-28 days

<p>Without Clostridia</p>	<p>In case of damage to the integrity of the skin with contamination (cuts, bites, other injuries). When using expired or doubtful foods, canned foods, etc. Alternate with the "Without toxins" program throughout the day. Make sure to contact/see a doctor!</p>	<p>Antibacterial Anti-inflammatory</p>	<p>1-2 days</p>	<p>14-28 days</p>
<p>Without Cryptococcus</p>	<p>As one of the methods for preventing the disease, for people working in poultry farms engaged in breeding birds in an apartment or on their own farm. Particular attention is given to people with reduced immunity and chronic lung diseases located in places where birds gather.</p>	<p>Antifungal Anti-inflammatory</p>	<p>2-3 days</p>	<p>1 month</p>
<p>Without Enterococcus</p>	<p>Frequent and painful urination, pain during bowel movements, decreased potency, increased fatigue, depression, gastritis, dysbiosis, food poisoning.</p>	<p>Antibacterial Anti-inflammatory Antitoxic</p>	<p>1-2 days</p>	<p>14-28 days</p>

Without Echinococcus	Prevention of helminthic invasion and damage to internal organs to people raising animals, livestock, collecting berries, fruits, vegetables, hunting. Especially living in South America and Europe, North Africa, New Zealand, Australia, in Russia in areas: Volga region, Western Siberia, Krasnodar Territory, in the Far East.	Antiparasitic	2-3 days	1-2 months
Without Leptospira	Jaundice, hemorrhagic fever, occupational diseases of pastoralists and agricultural workers.	Antibacterial Anti-inflammatory	1-2 days	14-28 days
Without nematodes and ascaridae - New	Infection with roundworms, such as ascarides, pinworms, etc. Causing weight loss, peeling of the skin, rash, hair loss, bowel obstruction, inflammation of the respiratory tract, liver and pancreas. An enhanced, expanded program fights parasites at different stages of their life cycle.	Antiparasitic Antitoxic	2-3 days	1-2 months
Without Kidney Papilloma	HPV damage to the mucous surface of the urinary system (renal pelvis and bladder).	Antiviral Protects cells	2-3 days	1 month

Without Papilloma - General	Damage to the skin and mucous membranes caused by the Human Papilloma Virus. It is recommended to use with the "Clean Skin" complex.	Antiviral Protects cells	2-3 days	1 month
Without Proteus	Gastritis, diarrhea, abdominal pain, vomiting, exacerbation of dermatitis, allergies, problems in the genitourinary system, long non-healing wounds.	Antibacterial Anti-inflammatory Antitoxic	1-2 days	14-28 days
Without Pseudomonas aeruginosa	Local purulent-inflammatory processes in the soft tissues, organs of hearing, lungs, joints, etc. Also for people who are in hospital for a long time.	Antibacterial Anti-inflammatory Antitoxic	1-2 days	14-28 days
Without Rickettsia	Tick bites, especially in Asia and Australia, typhus, tick-borne fevers, etc.	Antibacterial Anti-inflammatory Protects cells	1-2 days	14-28 days
Without Rotavirus	Normalizes the condition and stops dehydration in case of dysbacteriosis caused by rotavirus infection.	Antiviral Protects cells	1-2 days	14-21 days
Without Salmonella	Normalizes the condition during toxic infection, which appeared as a result of eating foods with pathogenic microorganisms.	Antibacterial Anti-inflammatory Antitoxic	1-2 days	14-28 days

Without Shigella	Normalizes the condition and stops dehydration with diarrhea caused by the presence of this bacterium.	Antibacterial Anti-inflammatory Protects cells	1-2 days	14-28 days
Without Toxoplasma	Parasitic invasion caused by intracellular protozoa and accompanied by the development of the inflammatory process in the lymph nodes, liver, brain, lungs, heart, muscles, etc.	Anti-protozoan Anti-inflammatory	2-3 days	1 month
Without Trematodes - General 1	Damage to the liver, pancreas, lungs, circulatory and genitourinary systems, toxic-allergic reactions caused by a number of flukes: feline, hepatic, pulmonary, lanceolate, etc. Programs are used together with each other.	Antiparasitic Protects cells Antitoxic	2-3 days	1-2 months
Without Trematodes - General 2				
Without Trichomonas	Inflammatory processes of the genitourinary sphere, pain during intercourse, itching and burning, discharge and unpleasant odor.	Antiprotozoal Anti-inflammatory	2-3 days	1 month
Without Ureaplasma	Inflammatory processes of the genitourinary sphere, impaired reproductive function, pain in the lower abdomen, rapid and painful urination.	Anti-protozoan Anti-inflammatory	2-3 days	1 month

Without Yersinia	Toxic-allergic reaction that occurs when hygiene measures are not followed and accompanied by skin rashes, a violation of the digestive tract, inflammation of the joints.	Antibacterial Anti-inflammatory	1-2 days	14-28 days
Stop Coronavirus - New	Inflammation of the mucous membranes of the nose, throat, lungs, weakness, decreased sense of smell and hearing. Improved and advanced program. It is advisable to use according to the methodology of the "Stop Coronavirus" complex.	Antiviral Protects cells Anti-inflammatory	1-2 days	1 month
Bacterial pneumonia	Inflammation of the respiratory system caused by Streptococcus pneumoniae, Chlamydomydia pneumoniae, Mycoplasma pneumoniae, Klebsiella pneumoniae, etc., accompanied by fever, weakness, headache, cough, shortness of breath, pain in the chest, muscles and joints.	Antibacterial Anti-inflammatory	1-2 days	1 month
Without cough	In the presence of both dry and wet cough with various infections. To get the best effect, it is recommended to use in conjunction with the "Anti-cold" and "Free Breath" programs on the DeVita Ritm device.	Anti-inflammatory Decongestant Relieves from spasms	Within 1 day	1 month

Without pneumonia	In the presence of respiratory tract infection, cough, general weakness, fatigue, drowsiness, shortness of breath, chest pain. It is recommended to use with other anti-inflammatory programs aimed at normalizing the function of the respiratory system.	Anti-inflammatory Decongestant	2-3 days	1 month
-------------------	--	-----------------------------------	----------	---------

DeVita AP (manual programs)

Name of the program	In which cases the program can be used	Effect	First results	Lasting effect
Mode 1 - automatic	Viral and protozoan loads. Optimal disease prevention when changing climatic zones, visiting Asian countries.	Antiviral Anti-inflammatory Anti-protozoan Antitoxic	1-3 days	2-4 weeks
Mode 2 - automatic	Toxic stress caused by streptococcus and staphylococcus. Effective both for colds and for the prevention of coccal infections.	Antibacterial Anti-inflammatory Antitoxic	2-3 hours	10-14 days
Mode 3 - automatic	Bacterial burden in the digestive tract and the genitourinary system.	Antiviral Anti-inflammatory Antibacterial Antitoxic	1-3 days	2-4 weeks
Mode 4 - automatic	Presence of mycotoxins in the organism formed by mold and yeast. Reduces the risk of accumulation of carcinogenic factors.	Antifungal Anti-inflammatory Antitoxic	2-3 days	1-2 months

Cleansing - automatic	Violation of the lymphatic system, swelling, decreased immunity.	Antiseptic Antitoxic Lymphatic drainage Decongestant	Within 1 day	1 month
No parasites - automatic	Parasitic burden in the liver, pancreas, intestines, as well as toxic load caused by the vital activity of these microorganisms.	Antiparasitic Antitoxic	2-3 days	1 - 2 months
No flu - automatic	Inflammatory processes caused by various strains of the influenza virus.	Antiviral Antipyretic Anesthetic Anti-inflammatory Antitoxic	2-3 hours	5-10 days
Stop herpes S - automatic	In case of vesicles forms on the mucous membranes of the lips, genitals, eyes, mouth, skin, which are formed due to activation of the Herpes Simplex virus.	Antiviral Anti-inflammatory Antipruritic Antitoxic	Within 1 day	1 month
Stop herpes Z - automatic	Shingles - skin rashes, accompanied by severe pain along the sensory nerve.	Antiviral Anti-inflammatory Antipruritic Anesthetic Antitoxic	Within 1 day	1 month
Without cold - automatic	Inflammation of the nose, throat, bronchi.	Antiviral Anti-inflammatory Antitoxic	Within 1 day	5-7 days

Support immune system - automatic	Effective for preventing colds infections during hypothermia and during mass illnesses.	Antiviral Antitoxic	2-3 hours	5-7 days
Without helminths - automatic	Effective for the prevention of helminthiasis in children and adults.	Antiparasitic Antitoxic	2-3 days	1-2 months
Weight Reduction - automatic	Excess weight, resulting from viral complications. Puffiness.	Antiviral Antitoxic	1-2 days	4-6 months
Reduce Points - automatic	Violation of the lymphatic system, fluid retention, decreased immunity due to increased intoxication.	Antitoxic Lymphatic drainage Decongestant	1-2 days	4-6 months
Cell Protection 1	For removal of the general viral, herpetic and bacterial toxic loads. Reduces the activity of viruses and the negative effect of streptococcal toxins.	Antiviral Antibacterial Antitoxic	3-4 days	4-6 months
Cell Protection 2	Wrong lifestyle, great stress and physical exertion, living in adverse ecological areas. It is recommended to use the program within the application scheme of the "Healthy Cell" complex.	Antiviral Anti-protozoan Anti-inflammatory Protects cells	Within 1 week	6-12 months
Cell Protection 3	The program is effective against staphylococcal and chlamydial infections, and also reduces the negative impact of protozoan lesions of the genitourinary tract.	Antiviral Antibacterial Anti-protozoan Anti-inflammatory	3-4 days	4-6 months

Cell Protection 4	Fungal load and in order to prevent mutations and negative cell degeneration. It is recommended to use the program within the application scheme of the "Healthy Cell" complex.	Antifungal Anti-inflammatory Antitoxic Protecting cells	Within 1 week	6-12 months
Lyme 1 - automatic	Removal of the general viral, herpetic and bacterial toxic load. Reduces the activity of viruses and the negative effect of streptococcal toxins.	Antiviral Antibacterial Antitoxic	3-4 days	4-6 months
Lyme 2 - automatic	Tick bites, the detection of tick-borne borreliosis or Lyme disease. It is recommended to use the program within the application scheme of the "Lyme disease" complex.	Antiviral Antibacterial Anti-protozoan Anti-inflammatory	3-4 days	6-12 months
Lyme 3 - automatic	The program is effective against staphylococcal and chlamydial infections, and also reduces the negative impact of protozoan lesions of the genitourinary tract.	Antiviral Antibacterial Anti-protozoan Anti-inflammatory	3-4 days	4-6 months
Lyme 4 - automatic	Tick bites, the detection of tick-borne borreliosis or Lyme disease. It is recommended to use the program within the application scheme of the "Lyme disease" complex.	Antibacterial Antifungal Anti-inflammatory Antitoxic	3-4 days	6-12 months

Restoration 1 - automatic	Inflammation and damage to the mucous cavity, with dental interventions, an unbalanced diet.	Anesthetic Decongestant Anti-inflammatory Accelerates regeneration	1-2 days	1 month
Restoration 2 - automatic	After surgical interventions, with any damage to the integrity of the skin and mucous membranes, with inflammatory processes.	Anesthetic Decongestant Anti-inflammatory Accelerates regeneration	Within 1 day	2-4 weeks
Healthy Gums - Automatic	Infections and injuries of the oral cavity. It is recommended to use according to the application scheme of the "Healthy Teeth" complex	Decongestant Anti-inflammatory Accelerates regeneration	1-2 days	4-6 months
Nerve Regeneration - automatic	Negative disorder of the nervous system, a violation of the integrity of the nerve fiber caused by tick bites or other factors.	Anti-inflammatory Decongestant Anesthetic Protects cells	Within 1 week	6-12 months
Healthy Breathing - automatic	Diseases of the respiratory tract: nose, throat, bronchi, lungs.	Antiviral Antibacterial Antitoxic Anti-inflammatory	1-2 days	1 month

Appendix 5 – „Recommended DeVita programs for use with various functional problems“.

Organ system	Disorders of the organs of the system	Programs on DeVita Ritm	Programs on DeVita Ritm
Cardio-vascular system	Cardiac / coronary insufficiency (coronary heart disease, angina pectoris, post-infarction state, toxic damage to the heart muscle, functional overload of the heart, etc.)	Healthy Day - automatic Health - automatic Complete cleansing - automatic Healthy sleep Healthy heart	Antivirus Mode 2 – automatic No chlamydia No schistosomes (blood-flukes) & trematods Cleansing - automatic Intimate health Anti-virus Gastrointestinal Restoration 2 - automatic
	Heart rhythm disorders (arrhythmia, tachycardia)	Healthy Day - automatic Health - automatic Complete cleansing - automatic Healthy heart Cardiac rhythm normalization Healthy sleep - automatic	Antivirus Mode 2 – automatic No chlamydia No schistosomes (blood-flukes) & trematods Cleansing - automatic Anti-virus Gastrointestinal Intimate health

<p>Cardio-vascular system</p>	<p>Hypertension, hypotension, varicose veins, atherosclerosis and other diseases of the vascular system</p>	<p>Healthy Day - automatic Health - automatic Complete cleansing - automatic Normal blood pressure - automatic Healthy venous system Without headache Digestion normalization Healthy sleep - automatic</p>	<p>Antivirus Mode 2 – automatic Mode 3 – automatic No chlamydia, No schistosomes (blood-flukes) & trematods Cleansing - automatic Anti-virus Gastrointestinal Without Yersinia Stop Migraine</p>
<p>Digestive system</p>	<p>Gastritis, esophagitis, heartburn, ulcer</p>	<p>Healthy Day - automatic Health – automatic Healthy sleep - automatic</p>	<p>No helicobacter Mode 4 – automatic No parasites - automatic Cleansing - automatic Restoration 2 - automatic</p>
	<p>Duodenitis, colitis, enteritis, ulcer, irritable bowel syndrome, dysbiosis, atony.</p>	<p>Healthy Day - automatic Health - automatic Complete cleansing - automatic</p>	<p>Mode 1 - automatic Mode 2 - automatic Mode 3 - automatic Mode 4 - automatic No parasites – automatic Without nematodes and ascarididae - New Cleansing - automatic Without Salmonella Without Proteus Without Klebsiella Stop Amoeba Without Clostridia</p>

Digestive system	Hepatitis, biliary dyskinesia, cholecystitis, pancreatitis, diabetes, cholelithiasis.	<p>Healthy Day - automatic</p> <p>Health - automatic</p> <p>Complete cleansing - automatic</p> <p>Digestion normalization</p> <p>Normal blood sugar</p> <p>Healthy Pancreas</p>	<p>Mode 1 - automatic</p> <p>Mode 3 - automatic</p> <p>No parasites – automatic</p> <p>Without nematodes and ascarididae</p> <p>- New</p> <p>No bacteria</p> <p>Cleansing - automatic</p> <p>Healthy Bile</p> <p>Without Trematodes – General 1,2</p> <p>Without Salmonella</p> <p>Without Leptospira</p> <p>Restoration 2 - automatic</p>
	Acute diseases (poisoning, allergies)	<p>Healthy Day - automatic</p> <p>Digestion normalization</p> <p>Without allergens</p> <p>No poisoning - automatic</p>	<p>Healthy Gastrointestinal</p> <p>Help against poisoning</p> <p>Drainage Antitox</p> <p>No allergies</p> <p>Cleansing - automatic</p> <p>Stop Penicillium</p> <p>Mexican detoxification</p> <p>Without Clostridia</p> <p>Without Shigella</p> <p>Without Proteus</p> <p>Without Rotavirus</p>

Nervous system	Neurosis	<p>Healthy Day - automatic</p> <p>Health – automatic</p> <p>Good mood</p> <p>Healthy sleep - automatic</p> <p>Functional memory +</p>	<p>Mode 1 - automatic</p> <p>Mode 2 - automatic</p> <p>Mode 3 - automatic</p> <p>Mode 4 - automatic</p> <p>Cleansing - automatic</p> <p>Stop Migraine</p> <p>No parasites – automatic</p> <p>No bacteria</p> <p>No fungi</p>
	Autonomic dysfunction	<p>Healthy Day - automatic</p> <p>Health – automatic</p> <p>Good mood</p> <p>Healthy sleep - automatic</p> <p>Healthy heart</p> <p>Healthy kidneys</p> <p>Without headache</p>	<p>Mode 1 - automatic</p> <p>Mode 2 - automatic</p> <p>Mode 3 - automatic</p> <p>Mode 4 - automatic</p> <p>Cleansing - automatic</p> <p>No parasites – automatic</p> <p>No bacteria</p> <p>No fungi</p> <p>No chlamydia</p> <p>Anti-virus Gastrointestinal</p> <p>Stop Migraine</p>
	Stroke	<p>Healthy Day - automatic</p> <p>Health – automatic</p> <p>Recovery from injuries</p> <p>Healthy sleep - automatic</p> <p>Healthy heart</p> <p>Without headache</p>	<p>Mode 1 - automatic</p> <p>Mode 2 - automatic</p> <p>Mode 3 - automatic</p> <p>Mode 4 - automatic</p> <p>Cleansing - automatic</p> <p>No parasites – automatic</p> <p>No bacteria,</p> <p>No fungi</p> <p>No chlamydia</p> <p>Anti-virus Gastrointestinal</p> <p>Stop Migraine</p>

Nervous system	Radiculitis, neuritis, shingles	<p>Healthy Day - automatic</p> <p>Health – automatic</p> <p>Recovery from injuries</p> <p>Healthy sleep – automatic</p> <p>Joints without pain – automatic</p> <p>Nervous System - General</p>	<p>Mode 1 - automatic</p> <p>Mode 2 - automatic</p> <p>Mode 3 - automatic</p> <p>Mode 4 - automatic</p> <p>Cleansing - automatic</p> <p>No parasites – automatic</p> <p>No bacteria,</p> <p>No fungi</p> <p>Stop herpes Z - automatic</p> <p>Anti-virus Gastrointestinal</p> <p>Restoration 2 - automatic</p>
Endocrine system	Hypothalamic-pituitary disorders	<p>Healthy Day - automatic</p> <p>Health - automatic</p> <p>Complete cleansing - automatic</p> <p>Women's health,</p> <p>Men's health</p>	<p>Mode 1 - automatic</p> <p>Mode 4 - automatic</p> <p>Cleansing - automatic</p> <p>Drainage Antitox</p> <p>Anti-virus Gastrointestinal</p> <p>Without Cryptococcus</p>
	Pancreatic disease	<p>Healthy Day - automatic</p> <p>Health - automatic</p> <p>Complete cleansing - automatic</p> <p>Digestion normalization</p> <p>Normal blood sugar</p> <p>Healthy Pancreas</p>	<p>Mode 1 - automatic</p> <p>No parasites – automatic</p> <p>Cleansing - automatic</p> <p>Without Trematodes - General</p> <p>1,2</p> <p>Without Salmonella</p> <p>Restoration 2 - automatic</p>

Endocrine system	Thyroid disease	<p>Healthy Day - automatic</p> <p>Health - automatic</p> <p>Complete cleansing - automatic</p> <p>Women's health, Men's health</p> <p>Digestion normalization</p> <p>Healthy Thyroid</p>	<p>Mode 1 - automatic</p> <p>Mode 4 - automatic</p> <p>Cleansing - automatic</p> <p>Drainage Antitox</p> <p>Restoration 2 - automatic</p>
	Adrenal disease	<p>Healthy Day - automatic</p> <p>Health - automatic</p> <p>Complete cleansing - automatic</p> <p>Women's health, Men's health</p>	<p>Mode 1 - automatic</p> <p>Mode 2 - automatic</p> <p>Cleansing - automatic</p> <p>Drainage Antitox</p> <p>Restoration 2 - automatic.</p>
	Genital Diseases	<p>Healthy Day - automatic</p> <p>Health - automatic</p> <p>Complete cleansing - automatic</p> <p>Women's health, Men's health</p>	<p>Mode 1 - automatic</p> <p>Mode 2 - automatic</p> <p>Mode 3 - automatic</p> <p>Mode 4 - automatic</p> <p>Cleansing - automatic</p> <p>No chlamydia</p> <p>Stop herpes S - automatic</p> <p>Anti-virus Gastrointestinal,</p> <p>Without Papilloma - General</p> <p>Without Trichomonas</p> <p>Without Enterococcus</p> <p>Restoration 2 - automatic</p>

Reproductive system	Female Genital Disorders (cycle disorders, painful menstruation, menopause, neoplasms)	<p>Healthy Day - automatic</p> <p>Health – automatic</p> <p>Women's health</p> <p>Female sexuality</p> <p>Complete cleansing - automatic</p>	<p>Mode 1 - automatic</p> <p>Mode 2 - automatic</p> <p>Mode 3 - automatic</p> <p>Mode 4 - automatic</p> <p>Cleansing - automatic</p> <p>No chlamydia</p> <p>Stop herpes S - automatic</p> <p>Without Proteus</p> <p>Anti-virus Gastrointestinal</p> <p>Without Papilloma - General</p> <p>Without Trichomonas</p> <p>Without Enterococcus</p> <p>Restoration 2 - automatic</p>
	Male Genital Disorders (prostatitis, adenoma, problems with potency)	<p>Healthy Day - automatic</p> <p>Health – automatic</p> <p>Men's Health - automatic</p> <p>Male sexuality</p> <p>Complete cleansing - automatic</p>	<p>Mode 1 - automatic</p> <p>Mode 2 - automatic</p> <p>Mode 3 - automatic</p> <p>Mode 4 - automatic</p> <p>Cleansing - automatic</p> <p>No chlamydia</p> <p>Stop herpes S - automatic</p> <p>Without Proteus</p> <p>Anti-virus Gastrointestinal</p> <p>Without Papilloma - General</p> <p>Without Trichomonas</p> <p>Without Enterococcus</p> <p>Restoration 2 - automatic</p>

<p>Urinary system</p>	<p>Urethritis, Cystitis, Urolithiasis, gout, pyelonephritis</p>	<p>Healthy Day - automatic Health – automatic Complete cleansing – automatic Healthy joints - automatic Without gout - automatic</p>	<p>Mode 1 - automatic Mode 2 - automatic Mode 3 - automatic Mode 4 - automatic Cleansing - automatic No chlamydia Stop herpes S - automatic Without Proteus Anti-virus Gastrointestinal Without Enterococcus Stop Penicillium Without Kidney Papilloma Without Trichomonas Restoration 2 - automatic</p>
<p>Respiratory system</p>	<p>Problems of the upper respiratory tract (acute respiratory infections, rhinitis, tracheitis, laryngitis, pharyngitis, sinusitis)</p>	<p>Healthy Day - automatic Health – automatic Without allergens Anti-cold</p>	<p>Without cold - automatic Mode 2 - automatic Mode 3 - automatic Mode 4 - automatic Cleansing - automatic No allergies No bacteria Clean Sinuses Against Cold - General, Restoration 2 - automatic Anti-virus Gastrointestinal Healthy Breathing - automatic</p>

Respiratory system	Lower respiratory problems (bronchitis, bronchial asthma, pneumonia)	<p>Healthy Day - automatic</p> <p>Health – automatic</p> <p>Without allergens</p> <p>Anti-cold - automatic</p>	<p>Without cold - automatic</p> <p>Mode 2 - automatic</p> <p>Mode 3 - automatic</p> <p>Mode 4 - automatic</p> <p>Cleansing - automatic</p> <p>No allergies</p> <p>No bacteria</p> <p>No parasites - automatic</p> <p>No nematodes and ascarides</p> <p>Healthy Breathing - automatic</p> <p>Without pneumonia</p> <p>Without cough</p> <p>Restoration 2 - automatic</p> <p>Without Pseudomonas aeruginosa</p>
Skin / mucous membranes	Contact dermatitis, seborrheic dermatitis	<p>Healthy Day - automatic</p> <p>Health – automatic</p> <p>Complete cleansing – automatic</p> <p>Healthy sleep – automatic</p> <p>Healthy skin and hair - automatic</p>	<p>Mode 1 - automatic</p> <p>Mode 2 - automatic</p> <p>Mode 4 - automatic</p> <p>No fungi</p> <p>No allergies</p> <p>Drainage Antitox</p> <p>Cleansing - automatic</p> <p>Restoration 2 - automatic</p>

Skin / mucous membranes	Neurodermatitis, eczema	<p>Healthy Day - automatic</p> <p>Health – automatic</p> <p>Complete cleansing – automatic</p> <p>Healthy sleep – automatic</p> <p>Without allergens</p> <p>Women’s health, Men’s health</p> <p>Beautiful skin</p>	<p>Mode 2 - automatic</p> <p>Mode 3 - automatic</p> <p>No allergies</p> <p>Drainage Antitox</p> <p>Cleansing - automatic</p> <p>Without Proteus</p> <p>Without Pseudomonas aeruginosa</p> <p>Restoration 2 - automatic</p>
	Allergy	<p>Healthy Day - automatic</p> <p>Health - automatic</p> <p>Complete cleansing - automatic</p> <p>Without allergens</p> <p>Anti-cold</p>	<p>Mode 4 - automatic</p> <p>No parasites - automatic</p> <p>Without nematodes and ascarididae - New</p> <p>No allergies</p> <p>Drainage Antitox</p> <p>Cleansing - automatic</p>
Musculo-skeletal system	Osteochondrosis, arthritis, arthrosis, gout, protrusion, trauma, bursitis, myositis	<p>Healthy Day - automatic</p> <p>Health – automatic</p> <p>Complete cleansing – automatic</p> <p>Joints without pain - automatic</p> <p>Healthy joints – automatic</p> <p>Without gout - automatic</p> <p>Recovery from injuries</p>	<p>Mode 1 - automatic</p> <p>Mode 2 - automatic</p> <p>Mode 3 - automatic</p> <p>Mode 4 - automatic</p> <p>Cleansing - automatic</p> <p>No chlamydia</p> <p>Drainage Antitox</p> <p>Against Lyme Disease 1,2</p> <p>Without Pseudomonas aeruginosa</p> <p>Without Enterococcus</p>

<p>Immune system</p>	<p>Allergy, problems of the thymus, spleen, lymph nodes</p>	<p>Healthy Day - automatic Health – automatic Complete cleansing – automatic Without allergens Clean lymph Without headache</p>	<p>Without cold - automatic Mode 2 - automatic Mode 4 - automatic No parasites - automatic Without nematodes and ascarididae - New Drainage Antitox Cleansing - automatic Mexican detoxification No allergies Against Cold - General Throat Without Pain Restoration 2 - automatic Stop Penicillium</p>
<p>Sensory organs</p>	<p>Eye problems (optic atrophy, blepharitis, keratitis, conjunctivitis, cataracts, glaucoma, myopia, hyperopia, astigmatism)</p>	<p>Healthy Day - automatic Health – automatic Complete cleansing – automatic Healthy eyesight Without allergens Nervous System - General</p>	<p>Support immune system - automatic Mode 2 - automatic Mode 3 - automatic Cleansing - automatic Stop herpes S - automatic Restoration 2 - automatic No parasites - automatic Without nematodes and ascarididae - New No chlamydia No fungi No allergies Drainage Antitox</p>

Sensory organs	Hearing problems (otitis media, hearing loss)	<p>Healthy Day - automatic</p> <p>Health – automatic</p> <p>Complete cleansing – automatic</p> <p>Healthy Ears</p> <p>Nervous System - General</p> <p>Recovery from injuries</p> <p>Anti-cold</p>	<p>Without cold - automatic</p> <p>Mode 2 - automatic</p> <p>Mode 4 - automatic, Intimate health</p> <p>No allergies</p> <p>Anti-virus Gastrointestinal</p> <p>Ears Without Inflammation</p> <p>Clean Sinuses</p> <p>Against Cold - General</p> <p>Restoration 2 - automatic</p>
	Problems of the sense of smell (acute respiratory disease, sinusitis, rhinitis, trauma)	<p>Healthy Day - automatic</p> <p>Health – automatic</p> <p>Complete cleansing – automatic</p> <p>Nervous System - General</p> <p>Anti-cold</p> <p>Without allergens</p> <p>Recovery from injuries</p>	<p>Without cold - automatic</p> <p>Mode 2 - automatic</p> <p>Intimate health</p> <p>No allergies</p> <p>No bacteria</p> <p>Anti-virus Gastrointestinal</p> <p>Clean Sinuses - General</p> <p>Clean Sinuses</p> <p>Against Cold - General</p> <p>Stop Coronavirus - New</p> <p>Restoration 2 - automatic</p>

<p>Dental problems</p>	<p>Damage and inflammation of the mucosa, bleeding gums, pain after dental interventions</p>	<p>Healthy Day - automatic Health – automatic Complete cleansing – automatic Strong Teeth Recovery from injuries</p>	<p>Mode 1 - automatic Mode 2 - automatic Mode 4 - automatic No fungi Healthy Gums - Automatic Restoration 1-2 - automatic Stop Injury (teeth) Without Fistula Drainage Antitox</p>
------------------------	--	--	--

Appendix 6 – "List of DeVita Cosmo special programs and areas of exposure".

Nº	Program name	Program description
1	Wrinkle-free skin	<p>The program helps to eliminate facial wrinkles, acne, strengthen skin tone and tighten the facial oval. This is a main program to maintain the health and youth of the skin. Then you can move on to subsequent programs that correct the work of the organs and make a facial changes.</p> <p>Application (Fig. 1): The position of the device does not matter. Quantum console should be driven along the lines shown in Figure 1 in the direction of the arrows (massage lines). Here the linear motion of the console is applied. The eyes should be closed during the procedure. You have to be guided by the feeling.</p> <p>Attention: do not place the device and quantum console on the thyroid gland area.</p>
2	Face tone	<p>Regular use of the program restores the natural processes of cell regeneration, in some cases strengthening them, prevents further aging of the skin, and eliminates minor wrinkles and smoothes the deeper ones. The program gives energy to the whole body, relieves general fatigue, and eases depressive states. This is the second most important program. It should be used for preventive purposes.</p> <p>Application (Fig. 2): The position of the device does not matter. Move the quantum console over one and the other of the auricle, starting at the top of the ear and moving gently downward. Perform four cycles and move on to the other ear. Again 4 cycles and go back to the first, and so on until the end of the session. Be sure to be guided by the sensation of warmth.</p> <p>Attention! The program is applied in the morning or afternoon.</p>
3	Women's health	<p>The program is designed to regulate the female endocrine and reproductive systems. It will be useful for women of any age.</p>

3	Women's health	<p>Application (Fig. 3): Place the device on the solar plexus area. Place the console on the indicated areas (Fig. 3) and perform circular movements on one side and on the other side alternately. Sessions should be performed once a week.</p> <p>Attention! It is not recommended to use this program during pregnancy and for persons under 14 years old.</p>
4	Men's health	<p>The main action of the program lies in the regulation of the male endocrine system: Hypothalamus - pituitary gland – adrenal glands – reproductive glands. It regulates also the function of the prostate. The program is essential for the prevention of impotency.</p> <p>Application (Fig. 4): The device itself should be placed on the area of the solar plexus. Place the console on the indicated in figure 4 area and perform circular movements on one side and on other side alternately.</p> <p>Sessions should be performed once a week.</p>
5	Liver function	<p>The program is aimed at the regulation of the liver and maintaining its functions.</p> <p>Application (Fig. 5): The device should be placed on the right side of the hypochondrium area. With the quantum console we act on the areas shown in Figure 5 one by one with circular movements. Eyes should be closed and oriented by the warmth sensation.</p>
6	Live in peace	<p>Aimed at maintaining a good mood, reducing stress and normalizing sleep.</p> <p>Application (Fig. 6): It is necessary to be in a quiet room, sit comfortably and begin to influence the specified zone (Fig. 6) with circular movements. Eyes closed. The effect on this area stimulates the entire nervous system. It relieves nervousness and gives a sense of calm and tranquility. The position of the device does not matter.</p>

7	It regulation of the stomach	<p>It normalizes the function of the stomach and relieves discomfort.</p> <p>Application (Fig. 7): Place the device on the stomach area. Apply the quantum console to the areas shown in Figure 7 with circular movements Eyes closed.</p>
8	Digestion	<p>It prevents digestive disorders and supports bowel function.</p> <p>Application (Fig. 8): Place the device on the stomach. Apply the quantum console to the indicated areas (Fig. 8) with circular movements Make 4 circular movements on one zone, then switch to the other, etc. Go back to the first zone again, and repeat the cycle until the end of the program. Eyes closed.</p>
9	Like clockwork	<p>The nature provides a timely removal of toxins and other harmful substances from the body. Constipation is a problem associated with difficult and improper bowel movements. A delay in stools for 48 hours is already considered a sign of constipation. Chronic constipation makes the skin pale or yellowish - it loses elasticity, becomes flabby. The program normalizes the work of the large intestine, preventing the formation of unpleasant phenomena.</p> <p>Application (Fig. 9): Place the device on the stomach. Apply the quantum console on the indicated areas (Fig. 9) with circular movements Make 4 circular movements on one area, then move to the other, then go back to the first. The cycle must be repeated until the end of the program.</p>
10	Kidneys stimulation	<p>The kidneys are the second most important organ after the liver, involved in the removal of toxic substances. They regulate water and electrolyte metabolism, acid-base balance, sodium concentration in the body, volume and osmotic pressure of blood and body fluids, remove excess water, urea, creatinine, uric acid, and salts. Kidney malfunction is instantly reflected on the face in the form of edema. The program helps to improve kidney function.</p>

10	Kidneys stimulation	<p>Application (Fig. 10): Place the device on the kidney area on the back side. Apply the quantum console on the indicated areas (Fig. 10) with circular movements. Make 4 circular movements on one zone, then switch to the other, etc. Go back to the first zone again, and cycle until the end of the program. Eyes closed.</p>
11	Thyroid gland	<p>The thyroid gland is an important organ of the endocrine system that regulates metabolism, heat exchange, nervous and other systems. Thyroid diseases are one of the most common in the world and are in the same order as the diseases of the cardiovascular system. The program is designed to prevent such diseases and normalize the entire body, as well as to eliminate dry skin, brittle nails and hair.</p> <p>Application (Fig. 11): The position of the device does not matter, except for the area of the gland itself. Influence the indicated zones (Fig. 11) with the quantum console by circular movements, smoothly moving from one zone to another. Repeat the movements until the end of the program.</p> <p>Attention: do not place the device and quantum console on the thyroid gland area, the effect is carried out strictly on the projection zones: the lower part of the neck along the esophagus, in the supraclavicular area and the area of the jugular fossa.</p>
12	Heart and Vessels	<p>Regulates the heart and blood vessels, improves blood flow to tissues.</p> <p>Application (Fig. 12): Place the device on the heart area. Apply the quantum console on the area shown in Figure 12 in circular movement. Eyes closed.</p>
13	Function of the spleen	<p>The condition of the spleen can affect the condition of the skin, the functioning of other organs and the "mood" of the whole body. The program helps to prevent spleen problems.</p>

13	Function of the spleen	<p>Application (Fig. 13): Place the device on the spleen area - left side of the body, just above the last rib. Apply the quantum console to the area shown in Figure 13 in circular movement. Eyes closed.</p>
14	Key to life	<p>It normalizes the activity of the pancreas.</p> <p>Application (Fig. 14): Place the device on the area of the pancreas. Apply the on the indicated areas (Fig. 14) with circular movements Make 4 circular movements with the quantum console on one zone, then move to the other zone. Go back to the first one again and repeat the cycle until the end of the program. Eyes closed.</p>
15	Sight correction	<p>The program relieves spasms of the small blood vessels of the eyes. It restores the normal function of the muscle that controls the lens.</p> <p>Application (Fig. 15):</p> <ul style="list-style-type: none"> - go to the window; - find a small dot on the glass. If there isn't any, put a small dot on the glass (e.g., with a marker pen); - place the quantum console on the side of the head near the temple. The console should not block the direction of the view. Apply to the areas shown in Figure 15 in a circular movement, guided by the warmth sensation; - while the device is running, focus your attention on this point so that the point is in sharpness (to do this, choose a comfortable distance at which the eye is not strained); - look at the point for 8-10 seconds. After that, move your gaze to the distance for 8-10 seconds; - then repeat this procedure until your eyes feel tired. After that, stop the exercise, do not take the console away from the zones. - Allow the device to run the program until the end; - Gradually increase the training time to the time of the device program. <p>After eye training, let your muscles rest for 20-30 minutes. This is necessary for the eyes to adapt to the new conditions and the muscles to gain elasticity.</p> <p>Attention: It is not advisable to strain your eyes for 2 hours after the session.</p>

16	Clean skin	<p>The program reduces inflammation (redness, acne, etc.)</p> <p>Application (Fig. 16): The device itself should be placed 25-30 cm from the face. Place the console on the indicated areas (Fig. 16) and perform circular movements on one side and the other in turn: first the forehead, then the cheeks, then the abdomen (to the right and left of the navel). The cycle will run until the end of the program. For prevention, use the program every other day. If needed, it can be used daily in sessions: 3-4 days in a row at any time of the day, then take a 3-4 day break and repeat the session. In total 10 sessions. After using this program, it is recommended to use the program "Digestion" as well as "Men's Health" or "Women's Health" to improve the effect.</p>
17	Braid Beauty	<p>In the off-season, the body is stressed: the hair after the winter season does not look perfect. Daily hair loss (up to 100 is normal) is physiologically normal. Hair loss above the norm indicates a disturbance in the body due to stress, exposure to cold, dry indoor climate, micro-nutrient deficiencies, sometimes the result of certain medications. The program helps in the prevention of hair loss and improves its condition.</p> <p>Application (Fig. 17): Place the device in front of your face or in the back of your head. Place the quantum console on the specified zones (Fig. 17). Make 4 circular movements with the quantum console on one zone, then move to the navel area (right and left). Repeat the cycles until the program is completely finished. After applying this program, it is recommended to use the "Digestion" program to improve the effect.</p>
18	Manicure Master	<p>Strengthens and improves the appearance of nails and hand skin.</p> <p>Application (Fig. 18): Place the device 20 cm from the hand to be treated. Make linear slow movements with the quantum console from the fingers to the base of the hand (wrist joint). First on the outside, then on the inside of the hand. Repeat the procedure on the other hand. Move to the abdominal area (right and left of the navel). Repeat the cycle until the end of the program.</p>

19	Face without flaws.	<p>Skin cells are constantly renewing themselves. Old dead cells that remain on the surface often interfere with its beautiful and well-kept appearance. Regular preventive use of the program will help to avoid such phenomena.</p> <p>Application (Fig. 19): Place the device at a distance of 25-30 cm from the face. Place the console on the indicated areas (Fig. 19) and perform circular movements on one and the other side in turn: first the forehead, then the cheeks, then the abdomen (right and left of the navel). Repeat the cycle until the end of the program. For prevention, use the program every other day. If needed, it can be used daily in sessions: 3-4 days in a row at any time of the day, then take a 3-4 day break and repeat the session. In total 10 sessions. After using this program, it is recommended to use the programs "Digestion", "Liver function" to improve the effect.</p>
20	Normalization of blood circulation in legs	<p>The program normalizes blood circulation in the legs, relieves fatigue and swelling.</p> <p>Application (Fig. 20): Place the device at a distance of 20 cm from the foot to be treated. Make linear movements with the quantum console from the fingertips to the base of the foot (ankle joint). First the back side, then the sole side. Repeat the procedure on the other leg. Move to the abdominal area (right and left of the navel). Repeat the cycle until the end of the program.</p>

Appendix 6 – "List of DeVita Cosmo special programs and areas of exposure".

№	Program name	Program description
1	Wrinkle-free skin	<p>The program helps to eliminate facial wrinkles, acne, strengthen skin tone and tighten the facial oval. This is a main program to maintain the health and youth of the skin. Then you can move on to subsequent programs that correct the work of the organs and make a facial changes.</p> <p>Application (Fig. 1): The position of the device does not matter. Quantum console should be driven along the lines shown in Figure 1 in the direction of the arrows (massage lines). Here the linear motion of the console is applied. The eyes should be closed during the procedure. You have to be guided by the feeling.</p> <p>Attention: do not place the device and quantum console on the thyroid gland area.</p>
2	Face tone	<p>Regular use of the program restores the natural processes of cell regeneration, in some cases strengthening them, prevents further aging of the skin, and eliminates minor wrinkles and smoothes the deeper ones.</p> <p>The program gives energy to the whole body, relieves general fatigue, and eases depressive states. This is the second most important program. It should be used for preventive purposes.</p> <p>Application (Fig. 2): The position of the device does not matter. Move the quantum console over one and the other of the auricle, starting at the top of the ear and moving gently downward. Perform four cycles and move on to the other ear. Again 4 cycles and go back to the first, and so on until the end of the session. Be sure to be guided by the sensation of warmth.</p> <p>Attention! The program is applied in the morning or afternoon.</p>

3	Women's health	<p>The program is designed to regulate the female endocrine and reproductive systems. It will be useful for women of any age.</p> <p>Application (Fig. 3): Place the device on the solar plexus area. Place the console on the indicated areas (Fig. 3) and perform circular movements on one side and on the other side alternately. Sessions should be performed once a week.</p> <p>Attention! It is not recommended to use this program during pregnancy and for persons under 14 years old.</p>
4	Men's health	<p>The main action of the program lies in the regulation of the male endocrine system: Hypothalamus - pituitary gland - adrenal glands - reproductive glands. It regulates also the function of the prostate. The program is essential for the prevention of impotency.</p> <p>Application (Fig. 4): The device itself should be placed on the area of the solar plexus. Place the console on the indicated in figure 4 area and perform circular movements on one side and on other side alternately.</p> <p>Sessions should be performed once a week.</p>
5	Liver function	<p>The program is aimed at the regulation of the liver and maintaining its functions.</p> <p>Application (Fig. 5): The device should be placed on the right side of the hypochondrium area. With the quantum console we act on the areas shown in Figure 5 one by one with circular movements. Eyes should be closed and oriented by the warmth sensation.</p>
6	Live in peace	<p>Aimed at maintaining a good mood, reducing stress and normalizing sleep.</p> <p>Application (Fig. 6): It is necessary to be in a quiet room, sit comfortably and begin to influence the specified zone (Fig. 6) with circular movements. Eyes closed. The effect on this area stimulates the entire nervous system. It relieves nervousness and gives a sense of calm and tranquility. The position of the device does not matter.</p>

7	It regulation of the stomach	<p>It normalizes the function of the stomach and relieves discomfort.</p> <p>Application (Fig. 7): Place the device on the stomach area. Apply the quantum console to the areas shown in Figure 7 with circular movements Eyes closed.</p>
8	Digestion	<p>It prevents digestive disorders and supports bowel function.</p> <p>Application (Fig. 8): Place the device on the stomach. Apply the quantum console to the indicated areas (Fig. 8) with circular movements Make 4 circular movements on one zone, then switch to the other, etc. Go back to the first zone again, and repeat the cycle until the end of the program. Eyes closed.</p>
9	Like clockwork	<p>The nature provides a timely removal of toxins and other harmful substances from the body. Constipation is a problem associated with difficult and improper bowel movements. A delay in stools for 48 hours is already considered a sign of constipation. Chronic constipation makes the skin pale or yellowish - it loses elasticity, becomes flabby. The program normalizes the work of the large intestine, preventing the formation of unpleasant phenomena.</p> <p>Application (Fig. 9): Place the device on the stomach. Apply the quantum console on the indicated areas (Fig. 9) with circular movements Make 4 circular movements on one area, then move to the other, then go back to the first. The cycle must be repeated until the end of the program.</p>
10	Kidneys stimulation	<p>The kidneys are the second most important organ after the liver, involved in the removal of toxic substances. They regulate water and electrolyte metabolism, acid-base balance, sodium concentration in the body, volume and osmotic pressure of blood and body fluids, remove excess water, urea, creatinine, uric acid, and salts. Kidney malfunction is instantly reflected on the face in the form of edema. The program helps to improve kidney function.</p>

10	Kidneys stimulation	<p>Application (Fig. 10): Place the device on the kidney area on the back side. Apply the quantum console on the indicated areas (Fig. 10) with circular movements Make 4 circular movements on one zone, then switch to the other, etc. Go back to the first zone again, and cycle until the end of the program. Eyes closed.</p>
11	Thyroid gland	<p>The thyroid gland is an important organ of the endocrine system that regulates metabolism, heat exchange, nervous and other systems. Thyroid diseases are one of the most common in the world and are in the same order as the diseases of the cardiovascular system. The program is designed to prevent such diseases and normalize the entire body, as well as to eliminate dry skin, brittle nails and hair.</p> <p>Application (Fig. 11): The position of the device does not matter, except for the area of the gland itself. Influence the indicated zones (Fig. 11) with the quantum console by circular movements, smoothly moving from one zone to another. Repeat the movements until the end of the program.</p> <p>Attention: do not place the device and quantum console on the thyroid gland area, the effect is carried out strictly on the projection zones: the lower part of the neck along the esophagus, in the supraclavicular area and the area of the jugular fossa.</p>
12	Heart and Vessels	<p>Regulates the heart and blood vessels, improves blood flow to tissues.</p> <p>Application (Fig. 12): Place the device on the heart area. Apply the quantum console on the area shown in Figure 12 in circular movement. Eyes closed.</p>
13	Function of the spleen	<p>The condition of the spleen can affect the condition of the skin, the functioning of other organs and the "mood" of the whole body. The program helps to prevent spleen problems.</p> <p>Application (Fig. 13): Place the device on the spleen area - left side of the body, just above the last rib. Apply the quantum console to the area shown in Figure 13 in circular movement. Eyes closed.</p>

14	Key to life	<p>It normalizes the activity of the pancreas.</p> <p>Application (Fig. 14): Place the device on the area of the pancreas. Apply the on the indicated areas (Fig. 14) with circular movements Make 4 circular movements with the quantum console on one zone, then move to the other zone. Go back to the first one again and repeat the cycle until the end of the program. Eyes closed.</p>
15	Sight correction	<p>The program relieves spasms of the small blood vessels of the eyes. It restores the normal function of the muscle that controls the lens.</p> <p>Application (Fig. 15):</p> <ul style="list-style-type: none"> - go to the window; - find a small dot on the glass. If there isn't any, put a small dot on the glass (e.g., with a marker pen); - place the quantum console on the side of the head near the temple. The console should not block the direction of the view. Apply to the areas shown in Figure 15 in a circular movement, guided by the warmth sensation; - while the device is running, focus your attention on this point so that the point is in sharpness (to do this, choose a comfortable distance at which the eye is not strained); - look at the point for 8-10 seconds. After that, move your gaze to the distance for 8-10 seconds; - then repeat this procedure until your eyes feel tired. After that, stop the exercise, do not take the console away from the zones. - Allow the device to run the program until the end; - Gradually increase the training time to the time of the device program. <p>After eye training, let your muscles rest for 20-30 minutes. This is necessary for the eyes to adapt to the new conditions and the muscles to gain elasticity.</p> <p>Attention: It is not advisable to strain your eyes for 2 hours after the session.</p>

16	Clean skin	<p>The program reduces inflammation (redness, acne, etc.)</p> <p>Application (Fig. 16): The device itself should be placed 25-30 cm from the face. Place the console on the indicated areas (Fig. 16) and perform circular movements on one side and the other in turn: first the forehead, then the cheeks, then the abdomen (to the right and left of the navel). The cycle will run until the end of the program. For prevention, use the program every other day.</p> <p>If needed, it can be used daily in sessions: 3-4 days in a row at any time of the day, then take a 3-4 day break and repeat the session. In total 10 sessions. After using this program, it is recommended to use the program "Digestion" as well as "Men's Health" or "Women's Health" to improve the effect.</p>
17	Braid Beauty	<p>In the off-season, the body is stressed: the hair after the winter season does not look perfect. Daily hair loss (up to 100 is normal) is physiologically normal. Hair loss above the norm indicates a disturbance in the body due to stress, exposure to cold, dry indoor climate, micronutrient deficiencies, sometimes the result of certain medications. The program helps in the prevention of hair loss and improves its condition.</p> <p>Application (Fig. 17): Place the device in front of your face or in the back of your head. Place the quantum console on the specified zones (Fig. 17). Make 4 circular movements with the quantum console on one zone, then move to the navel area (right and left). Repeat the cycles until the program is completely finished. After applying this program, it is recommended to use the "Digestion" program to improve the effect.</p>
18	Manicure Master	<p>Strengthens and improves the appearance of nails and hand skin.</p> <p>Application (Fig. 18): Place the device 20 cm from the hand to be treated. Make linear slow movements with the quantum console from the fingers to the base of the hand (wrist joint). First on the outside, then on the inside of the hand. Repeat the procedure on the other hand. Move to the abdominal area (right and left of the navel). Repeat the cycle until the end of the program.</p>

19	Face without flaws	<p>Skin cells are constantly renewing themselves. Old dead cells that remain on the surface often interfere with its beautiful and well-kept appearance. Regular preventive use of the program will help to avoid such phenomena.</p> <p>Application (Fig. 19): Place the device at a distance of 25-30 cm from the face. Place the console on the indicated areas (Fig. 19) and perform circular movements on one and the other side in turn: first the forehead, then the cheeks, then the abdomen (right and left of the navel). Repeat the cycle until the end of the program. For prevention, use the program every other day. If needed, it can be used daily in sessions: 3-4 days in a row at any time of the day, then take a 3-4 day break and repeat the session. In total 10 sessions. After using this program, it is recommended to use the programs "Digestion", "Liver function" to improve the effect.</p>
20	Normalization of blood circulation in legs	<p>The program normalizes blood circulation in the legs, relieves fatigue and swelling.</p> <p>Application (Fig. 20): Place the device at a distance of 20 cm from the foot to be treated. Make linear movements with the quantum console from the fingertips to the base of the foot (ankle joint). First the back side, then the sole side. Repeat the procedure on the other leg. Move to the abdominal area (right and left of the navel). Repeat the cycle until the end of the program.</p>



Figure 1



Figure 2



Figure 3



Figure 4



Figure 5



Figure 6



Figure 7



Figure 8



Figure 9



Figure 10



Figure 11



Figure 12



Figure 13



Figure 14



Figure 15



Figure 16



Figure 17



Figure 18



Figure 19



Figure 20

Appendix 7 – "List of recommended frequency sets for DeVita Cosmo with cycle of applications and the zones of exposure".

1. General disorders

Pain in general

Set of frequencies: 3,8+4,0+4,9+5,5+8,0+9,4+9,5+9,6

Areas of exposure:

1st day — 1, 2, 10, 12, 16, 19

2nd day — 1, 2, 10, 12, 16, 19

3rd day — 1, 4, 10, 12, 16, 19

4th day — 4, 5, 10, 12, 19

Detox

Set of frequencies: 0,7+0,9+2,5+2,65+3,3+9,8+56,0+69,0

Areas of exposure:

1st day — 1, 4, 5, 7, 19

2nd day — 5, 6, 9, 12, 16

3rd day — 7, 19

4th day — 4, 5, 16, 19

Overweight

Set of frequencies: 2,0+4,0+4,9+32,0+35,50

Areas of exposure:

1st day — 1, 2, 4, 7, 19

2nd day — 2, 4, 5, 19

3rd day — 5, 6, 7, 9

4th day — 7, 11, 19

Weakness, fatigue

Set of frequencies: 5,8+9,6+91,5+92,5+99,5

Areas of exposure:

1st day — 2, 10, 12, 19

2nd day — 2, 6, 9, 10

3rd day — 2, 10, 19

4th day — 2, 7, 10, 12, 19

Professional exposure to risk factors

Set of frequencies: 2,2+10,0+12,5+15,0+19,5+26,0+92,5

Areas of exposure:

1st day — 1, 4, 5, 7

2nd day — 1, 4, 5, 7

3rd day — 1, 4, 5, 7

4th day — 1, 4, 5, 7

Cramp and spasm

Set of frequencies: 6,0+6,8+33,5+54,0+64,0+70,5

Areas of exposure:

1st day — 1, 2, 19

2nd day — 1, 2, 19

3rd day — 1, 2, 19

4th day — 2, 19, 19

Tobacco Smoking

Set of frequencies: 3,5

Areas of exposure:

1st day — 1, 2, 4

2nd day — 1, 4, 12, 19

3rd day — 1, 4, 5

4th day — 1, 5, 6, 9, 19

Injuries

Set of frequencies: 1,2+2,5+3,6+3,8+3,9+8,6+92,0

Areas of exposure:

1st day — 4, 7, 10, 12, 14, 19, injury area

2nd day — 4, 5, 10, 12, 15, 17, 19, injury area

3rd day — 5, 10, 19, injury area

4th day — 6, 9, 10, 12, 15, 16, 19, injury area

2. Nervous system, behavioral disorders

Headache

Set of frequencies: 1,2+3, 8+3,9+6,3+7,5+32,5

Areas of exposure:

1st day — 1, 2, 10, 12, 19

2nd day — 1, 2, 10, 12, 19

3rd day — 1, 2, 10, 12, 19

4th day — 1, 2, 10, 12

Dizziness and impaired stability

Set of frequencies: 4,0+89,0+89,5+95,0+97,5

Areas of exposure:

1st day — 1, 2, 10

2nd day — 1, 2

3rd day — 1, 2, 10

4th day — 1, 2

Neurocirculatory dystonia

Set of frequencies: 1,2+4,0+6,0+6,3+9,4

Areas of exposure:

1st day — 1, 2, 6, 9, 12

2nd day — 2, 12, 19

3rd day — 1, 2, 6, 9

4th day — 2, 12, 19

Hysteria

Set of frequencies: 2,2+4,5+6,3+31,5

Areas of exposure:

1st day — 2, 4, 5, 7, 10, 11, 19

2nd day — 2, 6, 9, 19

3rd day — 2, 10, 11, 19

4th day — 2, 10, 11

Neurasthenia

Set of frequencies: 2,2+4,5+6,3+31,5

Areas of exposure:

1st day — 1, 2, 4, 5, 10

2nd day — 10, 12, 19

3rd day — 2, 4, 5, 7, 8, 12

4th day — 5, 6, 7, 9, 10, 12, 19

Neuralgia of trigeminal nerve

Set of frequencies: 7,5+10,0+30,0+87,5

Areas of exposure:

1st day — 1, 2, 12, 19

2nd day — 1, 2, 4, 19

3rd day — 1, 2, 12, 16

4th day — 1, 2, 19

Facial nerve neuritis

Set of frequencies: 3,9+7,5+89,5+91,5

Areas of exposure:

1st day — 1, 10, 19

2nd day — 1, 6, 9

3rd day — 1, 9, 10

4th day — 1, 9, 10, 19

Loss of appetite (anorexia)

Set of frequencies: 25,0+31,0+35,0+94,5

Areas of exposure:

1st day — 2, 5, 7, 12, 16

2nd day — 2, 7, 18

3rd day — 7, 8, 10, 12

4th day — 4, 5, 6, 9, 12

Lack or loss of sexual desire

Set of frequencies: 2,5+12,5+32,0+38,0+55,0+97,0

Areas of exposure:

1st day — 2, 5, 7, 12, 17, 19

2nd day — 2, 7, 10, 19

3rd day — 1, 4, 6, 7, 8, 9, 19

4th day — 4, 5, 9, 17, 19

Reduced memory

Set of frequencies: 21,0+50,0+80,0+80,5+90,0

Areas of exposure:

1st day — 1, 2, 16, 19

2nd day — 2, 4, 12

3rd day — 2, 16, 19

4th day — 2, 4, 12, 19

Anxiety-depression states

Set of frequencies: 3,5+5,5+19,0+92,5+93,5+98,5

Areas of exposure:

1st day — 1, 5, 19

2nd day — 6, 9, 10, 19

3rd day — 5, 10, 17, 19

4th day — 6, 9, 10, 19

Sleep disorders

Set of frequencies: $2,5+3,6+3,9+5,0+8,1+34,0+92,0$

Areas of exposure:

1st day — 1, 2, 11

2nd day — 2

3rd day — 2, 11

4th day — 1, 2, 11

Cerebrovascular insufficiency

Set of frequencies: $47,5+50,0+50,5+52,5+99,5$

Areas of exposure:

1st day — 1, 2, 16, 19

2nd day — 2, 4, 12

3rd day — 2, 16, 19

4th day — 2, 4, 11, 19

Erectile dysfunction

Set of frequencies: $2,6+4,0+4,9+9,4+55,0+97,0$

Areas of exposure:

1st day — 2, 7, 8, 10, 11, 15, 17

2nd day — 2, 6, 9, 11, 17, 19

3rd day — 1, 5, 7, 9, 11, 19

4th day — 7, 10, 13, 19

3. Sense Organs

Myopia

Set of frequencies: $3,6+4,9+31,5+72,5$

Areas of exposure:

1st day — 1, 2, 4, 7, 8, 12, 19

2nd day — 1, 2, 6, 9, 12, 16, 19

3rd day — 1, 4, 5, 7, 12, 19

4th day — 4, 7, 10, 12, 19

Glaucoma

Set of frequencies: $70,0+98,5$

Areas of exposure:

1st day — 1, 2, 4, 5, 12, 16, 19

2nd day — 1, 2, 5, 6, 9, 12, 19

3rd day — 1, 4, 7, 8, 9, 19

4th day — 12, 16, 19

Conjunctivitis

Set of frequencies: 11,0+65,5+66,5+70,0+75,5

Areas of exposure:

1st day — 1, 2, 4, 7, 12, 19

2nd day — 1, 2, 6, 7, 8, 9, 16, 19

3rd day — 4, 12, 16, 19

4th day — 5, 7, 10, 12, 19

Optic neuritis

Set of frequencies: 3,6+4,9+94,5

Areas of exposure:

1st day — 1, 2, 4, 5, 7, 12, 19

2nd day — 1, 2, 10, 12, 19

3rd day — 1, 5, 6, 9, 10, 16

4th day — 7, 10, 12, 19

Auditory nerve neuritis

Set of frequencies: 3,3+5,8+9,2

Areas of exposure:

1st day — 2, 10, 16, 19

2nd day — 2, 4, 5, 10, 16, 19

3rd day — 1, 3, 5, 7, 12, 16, 19

4th day — 3, 6, 7, 8, 9, 10, 12, 19

Otitis

Set of frequencies: 3,3+5,8+9,2+27,0+98,0

Areas of exposure:

1st day — 6, 9, 10, 12, 19

2nd day — 2, 7, 8, 12, 16

3rd day — 2, 12

4th day — 10, 12, 19

Reduced hearing

Set of frequencies: 5,8+6,0+9,25+9,8+60,0+95,0

Areas of exposure:

1st day — 2, 10, 16, 19

2nd day — 2, 4, 5, 10, 16, 19

3rd day — 1, 3, 5, 7, 12, 16, 19

4th day — 3, 6, 7, 8, 9, 10, 12, 19

4. Cardiovascular system

Varicose veins (lower extremities)

Set of frequencies: 2,5+9,4+10,0+60,5+66,5+68,0+68,5+99,0

Areas of exposure:

1st day — 7, 8, 12, 14, 19

2nd day — 4, 5, 13, 17, 19

3rd day — 5, 7, 8, 9, 14, 19

4th day — 7, 9, 16, 19

Vascular headache

Set of frequencies: 2,5+62,5+65,0+67,5+83,5+96,0+96,5

Areas of exposure:

1st day — 2, 10, 12

2nd day — 2, 7, 12, 16, 19

3rd day — 2, 10, 12

4th day — 2, 12, 16, 19

Hemorrhoids

Set of frequencies: 2,6+3,8+4,0

Areas of exposure:

1st day — 1, 2, 5, 7, 13, 14

2nd day — 6, 9, 10, 17

3rd day — 7, 8, 9, 11, 19

4th day — 4, 5, 13, 17

Arterial hypertension

Set of frequencies: 3,3+6,0+9,45+9,5+62,5

Areas of exposure:

1st day — 2, 4, 6, 9

2nd day — 5, 10, 17

3rd day — 2, 4, 6, 9

4th day — 10, 12, 15, 19

Arterial hypotension

Set of frequencies: $1,7+47,5+48,5+49,0+49,5+50,0+52,5+99,5$

Areas of exposure:

1st day — 2, 7, 8, 11

2nd day — 5, 6, 7

3rd day — 2, 7, 11

4th day — 2, 5, 6, 9, 19

Coronary heart disease

Set of frequencies: $1,2+3,3+9,45+38,0+38,5+95,0+97,0$

Areas of exposure:

1st day — 2, 4, 5, 7, 11

2nd day — 4, 5, 7, 9

3rd day — 2, 4, 5, 7, 9

4th day — 2, 6, 9, 12

Microcirculatory disorder

Set of frequencies: $7,0+9,4+9,45+19,5+40,5+46,0+50,0$

Areas of exposure:

1st day — 2, 4, 6, 9

2nd day — 5, 10, 17

3rd day — 2, 4, 6, 9

4th day — 10, 12, 15, 19

Heart rhythm disorder (tachycardia)

Set of frequencies: $1,2+3,3+6,0+9,45+38,0+38,5+95,0+97,0$

Areas of exposure:

1st day — 2, 4, 5, 10, 11

2nd day — 4, 5, 11, 19

3rd day — 3, 4, 6, 10, 11

4th day — 4, 5, 11, 19

Heart diseases (prevention)

Set of frequencies: $1,2+3,8+8,0+9,45+41,0+43,0+43,5+97,0$

Areas of exposure:

1st day — 2, 4, 5, 10, 11

2nd day — 4, 5, 11, 19

3rd day — 3, 4, 6, 10, 11

4th day — 4, 5, 11, 19

5. Respiratory organs

Allergic rhinitis

Set of frequencies: 2,5+2,9+7,5+12,0+74,0

Areas of exposure:

1st day — 1, 2, 12, 16, 19

2nd day — 1, 2, 12, 19

3rd day — 1, 4, 5, 12, 18, 19

4th day — 4, 5, 7, 12, 16, 19

Angina, tonsillitis

Set of frequencies: 9,45+20,5+52,0+71,5+75,5+82,0+86,0+89,0

Areas of exposure:

1st day — 1, 2, 4, 12, 16, 19

2nd day — 2, 4, 5, 7, 12, 19

3rd day — 4, 5, 12, 19

4th day — 7, 8, 10, 12, 19

Bronchial asthma

Set of frequencies: 3,8+5,9+7,7+9,4+50,0+55,0

Areas of exposure:

1st day — 2, 4, 5, 6, 11

2nd day — 2, 7, 8, 11

3rd day — 4, 5, 16

4th day — 4, 19

Bronchospasm

Set of frequencies: 3,8+5,9+7,7+9,4+50,0+55,0

Areas of exposure:

1st day — 1, 2, 4, 5

2nd day — 4, 5, 6, 7, 9, 11

3rd day — 4, 7

4th day — 11, 19

Bronchitis

Set of frequencies: 0,9+4,0+8,0+9,4+9,45+46,0+86,0

Areas of exposure:

1st day — 1, 2, 4, 5

2nd day — 4, 5, 6, 7, 9, 11

3rd day — 4, 7
4th day — 11, 19

Genyantritis (sinusitis)

Set of frequencies: 2,9+3,6+53,5

Areas of exposure:

1st day — 1, 2, 6, 9, 12, 16, 19

2nd day — 1, 2, 12, 16, 19

3rd day — 1, 12, 19

4th day — 4, 5, 12, 19

Cough

Set of frequencies: 0,9+4,0+8,0+9,4+9,45+75,0+81,0

Areas of exposure:

1st day — 2, 4

2nd day — 4, 12, 16

3rd day — 4, 5

4th day — 5, 6, 9, 19

Laryngitis

Set of frequencies: 9,5

Areas of exposure:

1st day — 1, 2, 4, 5, 11

2nd day — 1, 2, 4, 7, 11, 16, 19

3rd day — 4, 11, 19

4th day — 4, 11, 19

Pleurisy

Set of frequencies: 2,5+9,4+11,5

Areas of exposure:

1st day — 2, 5, 6, 9

2nd day — 3, 4, 16

3rd day — 4, 11

4th day — 4, 5, 19

Pneumonia

Set of frequencies: 0,9+4,0+8,0+9,4+9,45+46,0+86,0

Areas of exposure:

1st day — 2, 4, 5, 19

2nd day — 2, 5, 7, 16

3rd day — 4, 11, 19

4th day — 4, 5, 11

6. Gastrointestinal

Toothache

Set of frequencies: 3,6+4,9+8,0+9,5+17,3+30,5+31,0+79,5

Areas of exposure:

1st day — 1, 2, 10, 12, 16, 19

2nd day — 1, 2, 10, 12, 16, 19

3rd day — 1, 4, 10, 12, 16, 19

4th day — 4, 5, 10, 12, 19

Gastritis and duodenitis

Set of frequencies: 3,5+3,8+8,1+8,6+9,4+10,0+11,5

Areas of exposure:

1st day — 1, 2, 7, 10

2nd day — 2, 6, 9, 12, 19

3rd day — 4, 5, 10, 19

4th day — 5, 7, 12, 19

Chronic hepatitis

Set of frequencies: 0,9+2,5+3,3+9,8+17,0

Areas of exposure:

1st day — 19

2nd day — 5, 6, 9, 12, 16

3rd day — 7, 19

4th day — 4, 5, 16, 19

Biliary dyskinesia

Set of frequencies: 2,65+9,2

Areas of exposure:

1st day — 2, 7, 12, 19

2nd day — 2, 12, 14, 19

3rd day — 5, 6, 7, 9, 12, 16

4th day — 7, 10, 18, 19

Gallstones

Set of frequencies: 3,5+17,0+27,0+84,0+85,0+88,5+94,5+96,0

Areas of exposure:

1st day — 2, 12, 16

2nd day — 7, 10, 19

3rd day — 5, 6, 7, 9, 16

4th day — 7, 15, 19

Constipation

Set of frequencies: 3,5+3,8+8,1+8,6+9,4+10,0+11,5

Areas of exposure:

1st day — 2, 9, 12, 17

2nd day — 10, 15, 19

3rd day — 7, 9, 12, 19

4th day — 7, 10, 19

Intestinal colic

Set of frequencies: 3,5+3,8+8,1+8,6+9,4+10,0+11,5

Areas of exposure:

1st day — 2, 5, 7, 9, 12, 19

2nd day — 5, 7, 17, 19

3rd day — 6, 7, 8, 9, 12, 19

4th day — 9, 17, 18, 19

Digestive disorders (dyspepsia)

Set of frequencies: 3,5+3,8+8,1+8,6+9,4+10,0+11,5

Areas of exposure:

1st day — 2, 6, 7, 8, 9, 10, 19

2nd day — 2, 7, 19

3rd day — 4, 5, 10, 19

4th day — 5, 7, 12

Oral cavity

Set of frequencies: 4,9+33,6+84,0

Areas of exposure:

1st day — 1, 2, 4, 5, 12, 19

2nd day — 1, 2, 4, 5, 7, 19

3rd day — 4, 6, 7, 9, 12, 19

4th day — 4, 12, 16

Nausea and vomiting

Set of frequencies: 3,5+3,8+8,1+8,6+9,4+10,0+11,5

Areas of exposure:

1st day — 2, 10, 19

2nd day — 7, 10

3rd day — 5, 6, 11

4th day — 5, 10, 11

Cholecystitis

Set of frequencies: 2,65+9,2

Areas of exposure:

1st day — 2, 7, 10, 19

2nd day — 2, 12, 14, 19

3rd day — 5, 6, 7, 9, 12, 16

4th day — 7, 10, 18, 19

Enteritis and colitis

Set of frequencies: 3,8+5,9+7,7+61,0+63,0

Areas of exposure:

1st day — 2, 5, 7, 10, 12, 16

2nd day — 2, 6, 7, 9, 12

3rd day — 7, 8, 9

4th day — 4, 5, 10, 19

Ulcer (stomach, Duodenum)

Set of frequencies: 8,6+9,4+10,0+67,0+73,0+83,0+96,0

Areas of exposure:

1st day — 2, 4, 10, 12, 17

2nd day — 2, 6, 7, 9, 19

3rd day — 5, 10, 17

4th day — 4, 5, 10, 19

7. Skin and subcutaneous tissue

Atopic dermatitis (neurodermatitis)

Set of frequencies: 0,7+1,7+2,6+9,2+9,4+28,0+64,0

Areas of exposure:

1st day — 1, 2, 4, 5, 10, 11, 15, 18, 19

2nd day — 2, 3, 5, 6, 7, 9, 11, 16, 19

3rd day — 7, 9, 10, 11, 17, 19

4th day — 10, 11, 19

Eczema

Set of frequencies: 0,7+1,7+2,5+9,25+9,4+28,0+64,0

Areas of exposure:

1st day — 1, 2, 7, 10, 11, 15, 19

2nd day — 1, 2, 4, 5, 10, 14, 19

3rd day — 3, 4, 5, 7, 9, 19

4th day — 3, 7, 9, 11, 19

8. Musculoskeletal system

Extremity pain

Set of frequencies: 3,8+6,8+33,5+54,0+64,0+70,5+95,0

Areas of exposure:

1st day — 2, 9, 18, 19

2nd day — 13, 17, 19

3rd day — 13, 14, 19

4th day — 6, 9, 14, 16, 19

Back pain (various causes)

Set of frequencies: 1,2+2,5+3,6+3,8+3,9+7,5+33,0+79,0

Areas of exposure:

1st day — 7, 9, 10, 19

2nd day — 7, 9, 15

3rd day — 7, 8, 9, 10

4th day — 6, 9, 13

Arthritis of the Knee

Set of frequencies: 1,2+3,5+7,5+63,5+78,0+100,0

Areas of exposure:

1st day — 7, 13, 14, 19

2nd day — 7, 13

3rd day — 13, 15, 19

4th day — 9, 14, 19

Lumbago, sciatica

Set of frequencies: 62,5+64,5+67,5+76,5+94,0

Areas of exposure:

1st day — 7, 8, 9, 10, 15

2nd day — 2, 5, 6, 7, 9

3rd day — 7, 9, 10, 15

4th day — 2, 6, 7, 8, 9

Myalgia

Set of frequencies: 4,0+10,0+47,5+50,0+52,5+99,5

Areas of exposure:

1st day — 4, 7, 10, 12, 14, 19

2nd day — 4, 5, 10, 12, 15, 17, 19

3rd day — 5, 10, 19

4th day — 6, 9, 10, 12, 15, 16, 19

Cervico-thoracic osteochondrosis

Set of frequencies: 2,0+2,5+3,0+3,5+9,0+59,0+60,0+67,5

Areas of exposure:

1st day — 1, 5, 10, 12, 19

2nd day — 2, 5, 7, 10, 19

3rd day — 2, 5, 7

4th day — 2, 5, 7, 12, 19

Lumbosacral osteochondrosis

Set of frequencies: 9,6+76,0+84,5+95,0+100,0

Areas of exposure:

1st day — 7, 9, 10, 19

2nd day — 7, 9, 15

3rd day — 7, 8, 9, 10

4th day — 6, 9, 13

9. Urinary system

Decreased urine output

Set of frequencies: 8,1+9,4+81,0+86,0+88,0+90,5

Areas of exposure:

1st day — 2, 7, 13, 14, 19

2nd day — 2, 7, 8, 17, 19

3rd day — 3, 6, 9, 13, 17

4th day — 9, 19

Urolithiasis

Set of frequencies: 3,5+17,0+27,0+84,0+85,0+88,5+94,5+96,0

Areas of exposure:

1st day — 2, 7, 8, 9, 11, 19

2nd day — 2, 4, 14, 17, 19

3rd day — 4, 5, 7, 11, 19

4th day — 6, 7, 9, 11, 17, 19

Nephritis

Set of frequencies: 2,8+3,3+8,1+9,2

Areas of exposure:

1st day — 2, 6, 7, 8, 9, 19

2nd day — 2, 9, 11, 17

3rd day — 3, 5, 7, 11, 14

4th day — 4, 7, 11, 15, 19

Cystitis

Set of frequencies: 2,8+3,3+8,1+9,2+9,4

Areas of exposure:

1st day — 2, 9, 13, 17

2nd day — 5, 7, 13, 19

3rd day — 7, 14, 17, 19

4th day — 7, 14, 19

10. Reproductive organs

Female infertility

Set of frequencies: 2,5+3,5+4,0+4,9+8,5+9,4+9,5+9,6

Areas of exposure:

1st day — 2, 4, 7, 8, 9, 14, 19

2nd day — 2, 11, 13, 17, 19

3rd day — 4, 5, 10, 17, 19

4th day — 6, 7, 9, 11, 19

Gynecological problems (common)

Set of frequencies: 2,5+4,0+4,9+5,5+9,4+9,5

Areas of exposure:

1st day — 9, 11, 13, 19

2nd day — 7, 11, 14, 19

3rd day — 5, 8, 11, 17, 19

4th day — 6, 9, 11, 17, 19

Menopause (women)

Set of frequencies: 2,2+4,0+4,9+6,3+9,5+31,5+98,5

Areas of exposure:

1st day — 2, 7, 11, 19

2nd day — 2, 7, 8, 11, 17

3rd day — 4, 5, 10, 19

4th day — 5, 7, 9, 19

Menstrual cycle disorder

Set of frequencies: 20,0+22,0+42,0+49,0+63,0

Areas of exposure:

1st day — 9, 11, 13, 19

2nd day — 7, 11, 14, 19

3rd day — 5, 8, 11, 17, 19

4th day — 6, 9, 11, 17, 19

Benign prostatic hyperplasia

Set of frequencies: 2,5+2,6+4,0+4,9+9,4

Areas of exposure:

1st day — 2, 7, 9, 17, 19

2nd day — 2, 7, 8, 11, 14, 19

3rd day — 11, 13, 17, 19

4th day — 6, 9, 11, 13, 19

Prostatitis

Set of frequencies: 2,6+4,0+4,9+9,4+19,5+57,0+88,5

Areas of exposure:

1st day — 2, 5, 7, 15, 17

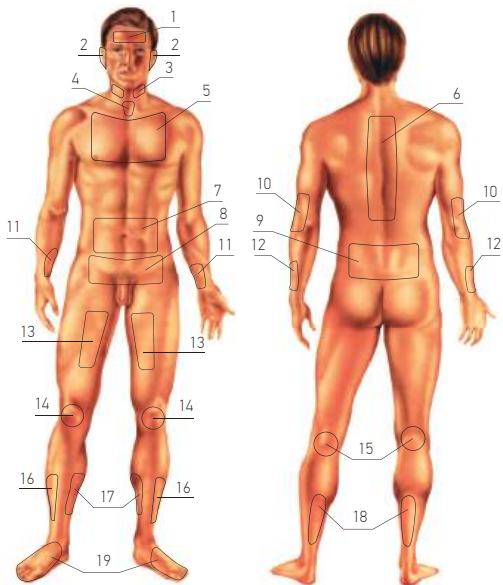
2nd day — 2, 6, 7, 9, 17, 19

3rd day — 7, 8, 9, 15, 19

4th day — 11, 13, 19

Atlas of color/light Areas of exposure

List of numerical codes of the Areas of exposure



1. Forehead
2. Ear
3. Neck
4. Jugular notch - sternum
5. Chest
6. Spine
7. Stomach
8. Lower abdomen and genitals
9. Lower back
10. Outside part of the elbow joint

11. Outside surface of the forearm
12. Rear surface of the forearm
13. Thigh
14. Knee
15. Popliteal fossa
16. Outside of lower tibia
17. Inner side of the lower leg
18. Rear side of the shin
19. Foot

Appendix 8 "List of Recommended HV Programs and application Areas".

Nº	Direction of exposure	Frequency, Hz	Active "+" and passive "-" electrode position
Common problems			
1	Allergy	1,7+3,8+8,1+9,6	+ right (left) hand; - right (left) leg
2	Inflammation	3,6	+ on the affected area; - to the opposite side
3	Purulent inflammation	1,7	+ on the affected area; - on the hand on the affected side
4	Headaches	9,45+9,5	+ forehead; - nape (back of the neck)
5	Hemorrhages, injuries	2,5	+ on the affected area; - to the opposite side
6	Obesity	4,0+4,9	+ forehead; - nape or + right hand; - left hand
7	Swelling	2,59	+ on the swollen area; - hand or foot electrode from the opposite side
8	Fatigue	2,2	+ forehead; - nape or + right hand; - left hand
9	Bruise	2,5	+ on the affected area; - to the opposite side
10	Spasms	3,8	+ on the affected area; - to the opposite side
Cardiovascular and respiratory systems			
11	Arteriosclerosis	3,3	+ right hand; - left hand
12	Asthma	0,94	+ chest area; - back area
13	Bronchitis	9,4	+ chest area; - back area
14	Asthmatic bronchitis	8	+ chest area; - back area
15	Varicose veins	2,5	+ on the affected area; - to the opposite side

16	Hemorrhoids	2,6+3,8+4,0	Sequentially: + hand electrode on the rectal area; - right leg Next: + hand electrode on the rectal area; - left leg
17	Hypertensive heart disease	3,3+6,0+9,2+9,4+9,5	+ right hand; - left hand or + forehead; - nape (back of the neck)
18	Systolic hypertension	6	+ right hand; - left hand
19	Diastolic hypertension	9,2	+ right hand; - left hand
20	Hypertension in the background of atherosclerosis	3,3	+ right hand; - left hand
21	Hypotension (collapse)	1,7	+ right hand; - left hand
22	Pneumonia	9,4	+ right hand; - left hand
23	Stenocardia	9,45	+ right hand; - left hand or + heart area; - back
24	Tachycardia	1,2	+ right hand; - left hand
25	Premature heart beat (extrasystole)	6	+ right hand; - left hand
Gastrointestinal tract			
26	Biliary dyskinesia, hyperfunction	9,2	+ right hand; - right leg
27	Biliary dyskinesia, hypo function	2,65	+ right hand; - right leg
28	Inflammation of the duodenum (duodenitis)	9,4	+ right hand; - left hand
29	Gallstones	3,5	+ right hand; - right leg
30	Pancreatitis	4	+ left hand; - left leg
31	Toxic and infectious lesions of the liver	0,9+2,5+3,3+9,8	+ right hand; - right leg

32	Peptic ulcer, 12 duodenal ulcer	8,6	+ right hand; - left hand
33	Peptic ulcer	9,4	+ right hand; - left hand
Musculoskeletal system			
34	Arthritis - arthrosis	1,2+1,6+9,2+9,6 +9,7	+ anterior (outer) side of the joint; - rear (inner) side of the joint
35	Arthritis of the ankle joint	9,6	+ outer side of the joint; - Inner side of the joint
36	Ankylosing spondylitis	9,6	Sequentially: + hand electrode on the vertebral column area; - right leg Next: + hand electrode on the vertebral column area; - left leg
37	Sciatica	9,7	+ zone of pain; - rear surface of the thigh or + hand electrode on the lumbar area; - right leg or left leg
38	Myalgia	6,8	+ affected area; - opposite side
39	Inflammation of the periosteum (periostitis)	2,65	+ affected zone; - opposite side
40	Fractures	8,6	+ zone of fracture; - opposite side
41	Gout	9,29	+ affected zone; - opposite side
42	Spinal pain on the background of osteochondrosis	9,6	+ hand electrode on the vertebral column area; - right or left leg
43	Increased tone of the occipital muscles	4,96	+ neck area; - right or left hand
44	Rheumatism	9,7	Sequentially: + left hand; - left leg. Next: + right hand; - right leg
45	Weakness in the joints of the knees	1,23	Sequentially: + hand electrode on the lumbar area; - right leg Next: +hand electrode on the lumbar area; - left leg

46	Muscle cramps	6,8	+ the affected area; - opposite side
Neuroendocrine System/Psychological Disorders			
47	Insomnia	2,5 или 8,5	+ forehead; - nape
48	Autonomic disorders	2,5	+ right hand; - left hand
49	Hypophysis-disorder	4	+ right hand; - nape or + right hand; - left hand
50	Depressions	5,89	+ forehead; - nape or + right hand; - left hand
51	Melancholy	3,5	+ forehead; - nape or + right hand; - left hand
52	Neuralgia	3,9	+ on the zone of pain; - opposite side
53	Trigeminal neuralgia	7,5	+ affected area; - right or left hand
54	Neuroses	6,3	+ forehead; - nape (back of the neck)
55	Adrenal gland disorder	9,45	+ right leg; - left leg
56	Flaccid paralysis	8,29	+ hand on the affected side; - nape
57	Reduced sensitivity and muscle weakness (paresis)	9,4	+ affected zone; - opposite side
58	Tearfulness	3,6	+ forehead; - nape (back of the neck)
59	Parathyroid gland (Ca and P balance)	4,69	+ neck; - right or left hand
60	Irritability	3,66	+ forehead; - nape (back of the neck)
61	Sleep disorders (phases of sleep)	3,9	+ forehead; - nape (back of the neck)
62	Fear	3,5	+ forehead; - nape

63	Brain concussion	6,3	+ forehead; - nape
64	Diabetes mellitus (glucose reduction effect)	9,2	+ left hand; - left leg
65	Thyroid gland	9,5	+ neck area; - right or left hand
Urogenital system			
66	Inflammation of the uterine appendages	9,4	+ right or left hand; - right or left leg
67	Hypermenorrhea	2,54	+ right (left) arm; - right (left) leg
68	Impotence	2,6+4,0+4,9	Sequentially: + hand electrode on the rectal area; - right leg Next: + hand electrode on the rectal area; - left leg
69	Climax Dysmenorrhea	4,0+4,9+9,5	+ right hand; - left hand
70	Uterine myoma	2,5	+ right leg; - left leg or sequentially: + hand electrode on the pubic area; - right leg Next: + hand electrode on the pubic area; - left leg
71	Painful menstruation	3,54	+ right leg; - left leg or sequentially: + hand electrode on the pubic area; - right leg Next: + hand electrode on the pubic area; - left leg
72	Heavy periods	2,5+4,0+4,9	+ right leg; - left leg or sequentially: + hand electrode on the pubic area; - right leg Next: + hand electrode on the pubic area; - left leg
73	Diuretic effect (regulation of electrolyte balance of K and Na)	8,1	+ right leg; - left leg or + right hand; - right leg
74	Renal colic	2,8+3,3+3,5+8,1	+ right leg; - left leg

75	Kidney inflammation (pyelonephritis)	2,8+3,3+8,1+9,2	+ right leg; - left leg
76	Inflammation of the prostate	9,4	+ right leg; - left leg or sequentially: + hand electrode on the rectal area; right leg Next: + hand electrode on the rectal area; - left leg
77	Bladder inflammation (cystitis)	8,19	+ right leg; - left leg or sequentially: + hand electrode on the pubic area; - right leg Next: + hand electrode on the pubic area; - left leg
78	Inflammation of the uterine mucosa (endometritis)	9,4	+ right leg; - left leg or sequentially: + hand electrode on the rectal area; - right leg Next: hand electrode in the rectal area; - left leg
Dental, skin and ENT problems			
79	Purulent inflammation of the tonsils (angina)	9,45	+ on the neck area; - right or left hand
80	Skin inflammation (dermatitis)	0,7+1,7+2,6+9,2 +9,4	+ right hand; - left hand
81	Runny nose	2,9	Sequentially: + on the area of the sinuses; - right leg. Next: + on the area of the sinuses; - left leg
82	Otosclerosis	3,39	+ area of the mastoid region; - on the affected side
83	Loss of the voice (aphonia)	9,5	+ larynx; - neck area or nape
84	Gum disease (periodontal disease)	1,7+2,5+9,5	+ affected area; - right or left hand
85	Inflammation of the sinuses (sinusitis)	2,5	Sequentially: + the area of the sinuses; - right leg. Next: the area of the sinuses; - left leg
86	Acne	1,7	+ on the affected area; - hand on the affected side
87	Erythema nodosum	9,4	+ affected area; - opposite side

88	Furunculosis	1,7+3,3+4,9+9,2 +9,4	Sequentially: + left hand; - left leg. Next: + right hand; + right leg
89	Eczema	0,7+1,7+2,5+9,2 + 9,4	Sequentially: + left hand; - left leg. Next: + right hand; - right leg
90	Pustular eczema	2,2	+ the affected area; - opposite side
Specific frequencies for headaches of various origins			
91	Cerebral (with circulatory disorders)	1,26	+ forehead; - nape (back of the neck)
92	Meningeal (inflammation of the brain membranes)	4,9	+ forehead; - nape or + right hand; - left hand
93	Headache due to otitis media	5,89	+ forehead; - right or left hand
94	Headache due to diseases of the appendicular sinuses	2,5	+ area of the sinuses; - right or left hand
95	Headache caused by tonsillitis	9,45	+ neck area (projection of tonsils); - right or left hand
96	Headache caused by liver disease	2,66	Sequentially: + left hand; - left leg. Next: + right hand; - right leg
97	Headache caused by stomach diseases	9,4	Sequentially: + left hand; - left leg. Next: + right hand; - right leg
98	Headache caused by intestinal diseases	2,6+8,0+9,4	Sequentially: + forehead or right arm; - right leg. Next: + forehead or right arm; - left leg
99	Headache caused by kidney disease	9,2	Sequentially: + forehead or right arm; - right leg. Next: + forehead or right arm; - left leg
100	Headache caused by urinary tract diseases	9,4	Sequentially: + forehead; - right leg. Next: + forehead; - left leg
101	Headache caused by vegetovascular dystonia	5,5+9,5	+ forehead; - nape (back of the neck)
102	Headache caused by vertebrobasilar insufficiency	9,6	+ forehead; - nape or sequentially: + forehead; - right leg. Next: + forehead; - left leg.